

Entry / ECO

Standard / STD

Professional / PRO

ODM & OEM

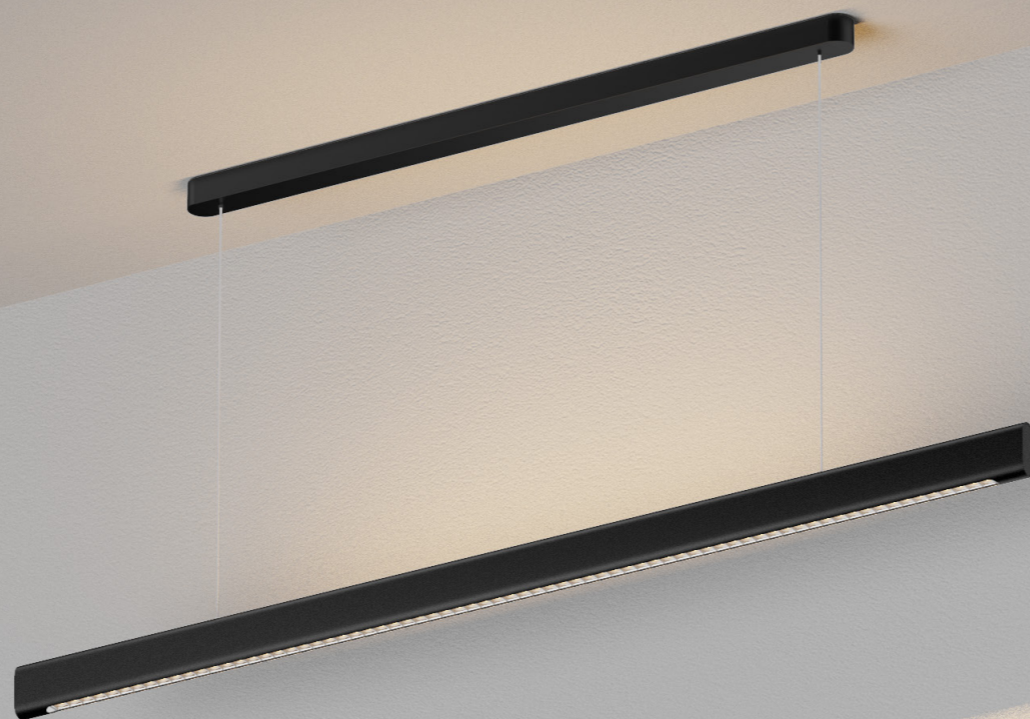
Intelligent / INT



QR - SHOP

accutron_{ag}
Batterien & LED Beleuchtung
www.accutron.ch
Tel. +41 43 266 20 50 sales@accutron

PRO
Specifications



LED Linear
DB207 Series





Introduction

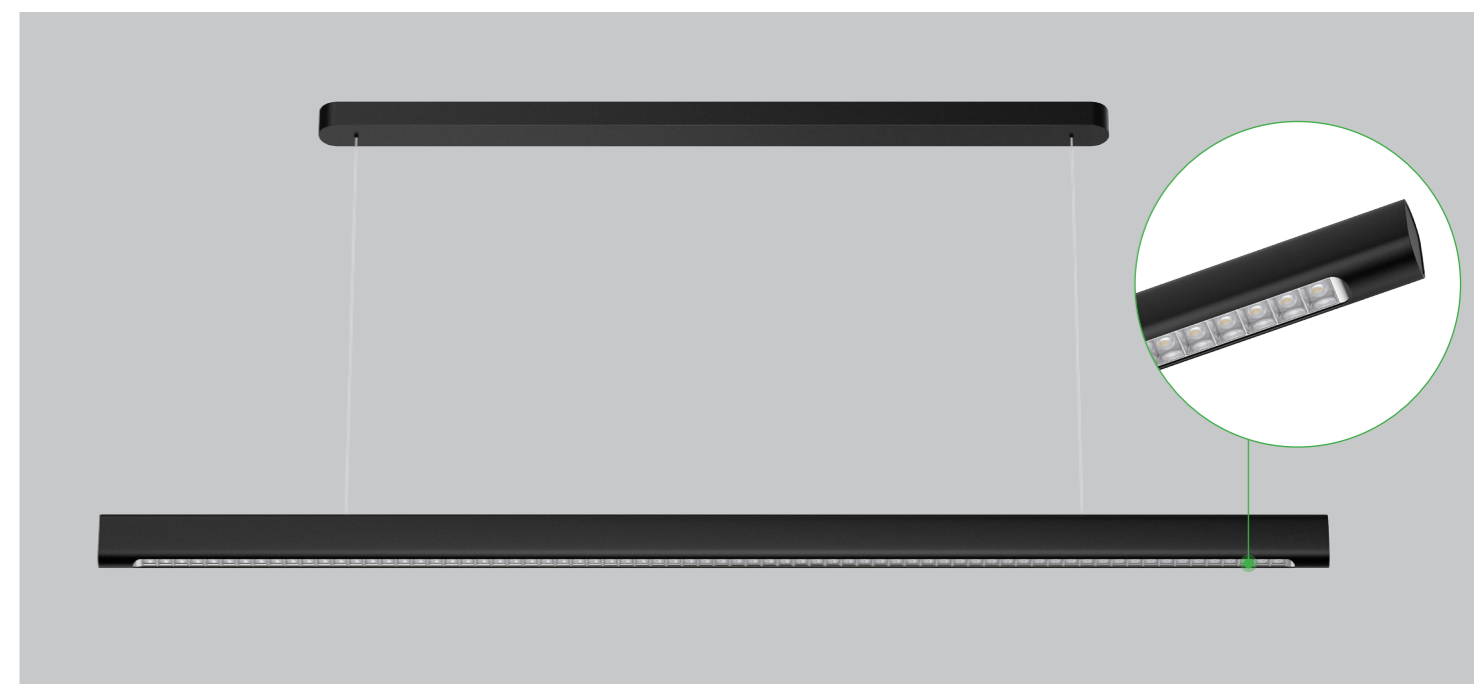
This linear light comprises a sleek and elegant slim design with clean minimalist finishing to complement a versatile range of interior designs. Clean, sleek, slim and class are feeling evoked with this linear lighting design. UGR<19 though internal optic lens and reflector, which offers comfortable visual experience for users. AL6063 aluminium housing not only ensure a strong quality but also for great thermal management and long lifespan. It will be a perfect choice for office, dining table, kitchen or conference table.

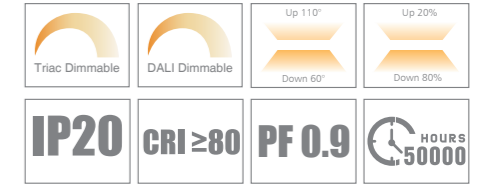
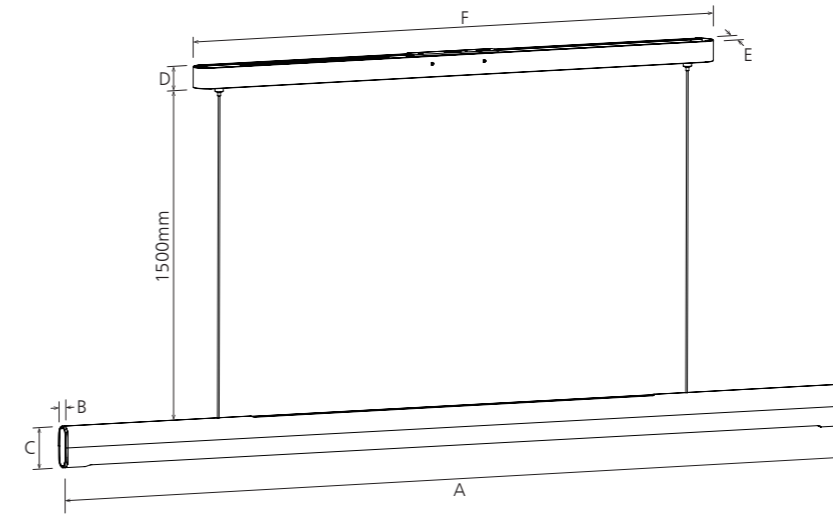
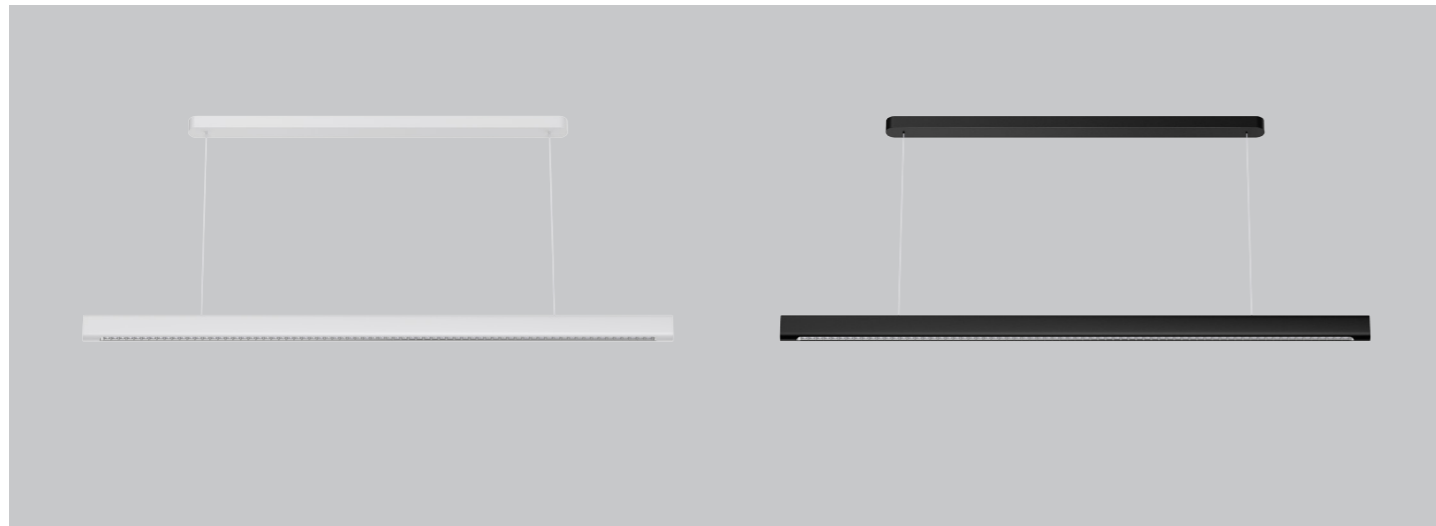
Features

- Super slim design with 25mm thickness only
- Direct & indirect lighting design, direct 80% and indirect 20%
- UGR<19
- Finished color: White RAL 9016,Black RAL9005
- Driver replaceable for easy maintenance
- Dimming way: Triac, DALI
- Internal flicker free driver

Application Areas

It is designed for indoor applications in office, dining table, kitchen or conference table etc.





Technical Data Sheet

Code	DB207-1200		DB207-1600					
Dimension(mm)	1200*25*59		1572*25*59					
Cutout (mm)	-							
Watt(W)	30W	36W	36W	40W	42W	50W		
Rated Input Voltage	AC220-240V							
Input Voltage	AC198-264V							
LED Module Input	-							
Light Source	SMD							
SDCM	<6							
CCT(K)	1-CCT:3000K/ 4000K/ 5000K/ 5700K							
CCT Selection DIP Switch	-							
Luminous Flux (lm) ±5% CRI80	1-CCT	Non-DIM	3300-3850	3800-4300	3800-4300	-	4600-5200	5250-6000
		DIM	3300-3850	3800-4300	3800-4300	4200-4800	4600-5200	5250-6000
	3-CCT	Non-DIM	-					
		DIM	-					
Remark: If with Black color, the lumen will decrease around 6%								
CRI	80							
Beam Angle (°)	Down 60°, Up110°							
UGR	<19							
LED Driver	Driver built-in							
Dimming Option	DALI / Triac							
Sensor	NO							
Emergency Kits	NO							
Electrical Class	Class I							
Ingress Protection(IP Rating)	IP20							
Impact Resistance(IK Rating)	-							
Product Finishing	White RAL 9016; Black RAL9005							
Optics Material	PC							
Housing Material	Aluminium							
Lifetime (hr)	50,000h							
Glow wire test (°C)	750°C							
Operating Temp.(°C)	-20°C-45°C							
Storage Temp.(°C)	-20°C~65°C							
Installation	Pendant							

Measurement

Code	Dimension(mm)						Size(mm)	Product Weight (Kg)		Package weight (Kg)		Carton Size(cm)	Qty/CTN	20GP (pcs)	40HQ (pcs)
	A	B	C	D	E	F		N.W/PC	G.W/PC	N.W/CTN	G.W/CTN				
DB207-1200	1200	25	59	30	36.5	796.5	1200*25*59	1.68	2.17	10.08	14	124*27.5*19.5	6	2310	5694
DB207-1600	1572	25	59	30	36.5	1168.5	1572*25*59	2.15	2.87	12.90	18.4	161*27.5*19.5	6	1782	4446

Driver Datasheet(Non-dimmable)

Total load wattage		30W	36W	42W	50W
Output	Rated output current	800mA	950mA	1100mA	1300mA
	Output Voltage range	DC28-40V			
	Line Regulation	±5%			
	Setup, Rise Time	≤0.5			
	Flickering Index	0.25% (NO RISK)			
Input	Rated Input Voltage	AC220-240V			
	Input Voltage	AC198-264V			
	Frequency	50/60Hz			
	Rated Input Current	≤0.15A	≤0.18A	≤0.21A	≤0.25A
	Input Current	≤0.16A	≤0.21A	≤0.24A	≤0.29A
	Power Factor	0.9			
	THD	<20% @230V			
	Efficiency	≥86%	≥88%	≥88%	≥88%
Protection	No load wattage	<0.5W @230V			
	Short circuit protection	PASS			
	Over voltage protection	PASS			
Safety & EMC	Over temperature protection	PASS			
	Withstand voltage	I/P-FG:1.5KVac, <5mA 60S			
	Isolation Resistance	500VDC, ≥2M Ω			
	Surge	IEC/EN61000-4-5 (P≥25W L-N:1KV, L/N-PE:2KV)			
Safety & EMC	EMC Emission	EN55015, EN61000-3-2			
	EMC Immunity	EN61000-4-2,3,4,5,6,8,11; EN61547			

Driver Datasheet(Triac Dimmable)

Total load wattage		30W	36W	40W
Output	Rated output current	800mA	950mA	1050mA
	Output Voltage range	DC28-40V		
	Line Regulation	±5%		
	Setup, Rise Time	<500ms@230V		
	Flickering Index	5%(LOW RISK)		
Input	Rated Input Voltage	AC220-240V		
	Input Voltage	AC198-264V		
	Frequency	50Hz		
	Rated Input Current	≤0.18A	≤0.21A	≤0.23A
	Input Current	≤0.20A	≤0.23A	≤0.26A
	Power Factor	0.9		
	THD	<20% @230V		
	Efficiency	≥84%		
	No load wattage	<1W@230V		
	Protection	Short circuit protection	PASS	
Over voltage protection		PASS		
Over temperature protection		PASS		
Safety & EMC	Withstand voltage	I/P-FG:1.5KVac, <5mA 60S		
	Isolation Resistance	500VDC, ≥2M Ω		
	Surge	IEC/EN61000-4-5 (P≥25W L-N:1KV, L/N-PE:2KV)		
	EMC Emission	EN55015, EN61000-3-2		
	EMC Immunity	EN61000-4-2,3,4,5,6,8,11; EN61547		

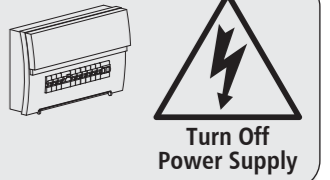
Driver Datasheet(DALI Dimmable)

Total load wattage		30W	36W	42W	50W
Output	Rated output current	800mA	950mA	1100mA	1300mA
	Output Voltage range	DC28-40V			
	Line Regulation	±5%			
	Setup, Rise Time	<1s @230V			
	Flickering Index	≤1%(NO RISK)			
Input	Rated Input Voltage	AC220-240V			
	Input Voltage	AC198-264V			
	Frequency	50/60Hz			
	Rated Input Current	≤0.15A	≤0.18A	≤0.22A	≤0.26A
	Input Current	≤0.17A	≤0.21A	≤0.24A	≤0.28A
	Power Factor	0.9			
	THD	<20% @230V			
	Efficiency	≥85%			
	No load wattage	<0.5w @230V			
	Protection	Short circuit protection	PASS		
Over voltage protection		PASS			
Over temperature protection		PASS			
Safety & EMC	Withstand voltage	I/P-FG:1.5KVac, <5mA 60S			
	Isolation Resistance	500VDC, ≥2M Ω			
	Surge	IEC/EN61000-4-5 (P≥25w L-N:1KV, L/N-PE:2KV)			
	EMC Emission	EN55015, EN61000-3-2			
	EMC Immunity	EN61000-4-2,3,4,5,6,8,11; EN61547			

Installation Procedure

WARNING

1. Switch off before installation.
2. Switch on only after complete installation and examination of the circuit.
3. Professional electrician for installation and maintenance only.



Pendant installation

