

Entry / ECO

Standard / STD

Professional / PRO

ODM & OEM

Intelligent / INT



LED Batten Light
DB186A/B-PLUS Series



Introduction

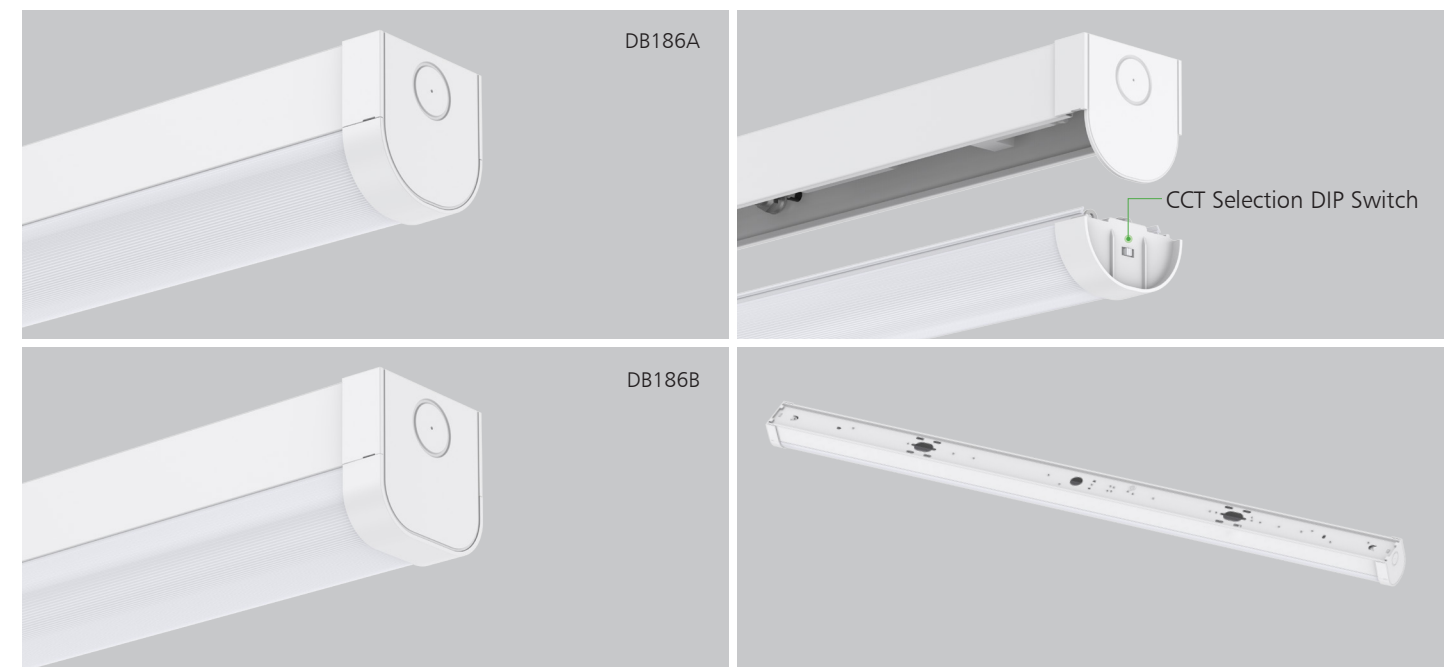
This is a high quality LED batten with high lumen efficiency and modular design. It adopts high lumen efficiency SMD light source, PC cover is internal stripe design which makes a uniform light output. Based on adjustable CCT and adjustable power functions, it has plug in/plug out modular with microwave sensor, emergency, microwave sensor+emergency which can be stocked as accessory. For installation, it utilizes plastic flexibility to clips the light source part into bracket, the end cap mounting hole allows loop in/ loop out connection, which offers more possibility for wider applications.

Features

- Compact design with screwless surface, which fits the ceiling tightly
- Adjustable power with DIP switch
- High lumen efficiency, 150lm/W@4000K
- Functions: adjustable CCT, microwave sensor, emergency, microwave sensor+emergency
- End cap with mounting hole for loop in/ loop out connection
- Size options: 1200/1500/1800mm
- Internal flicker free driver

Application Areas

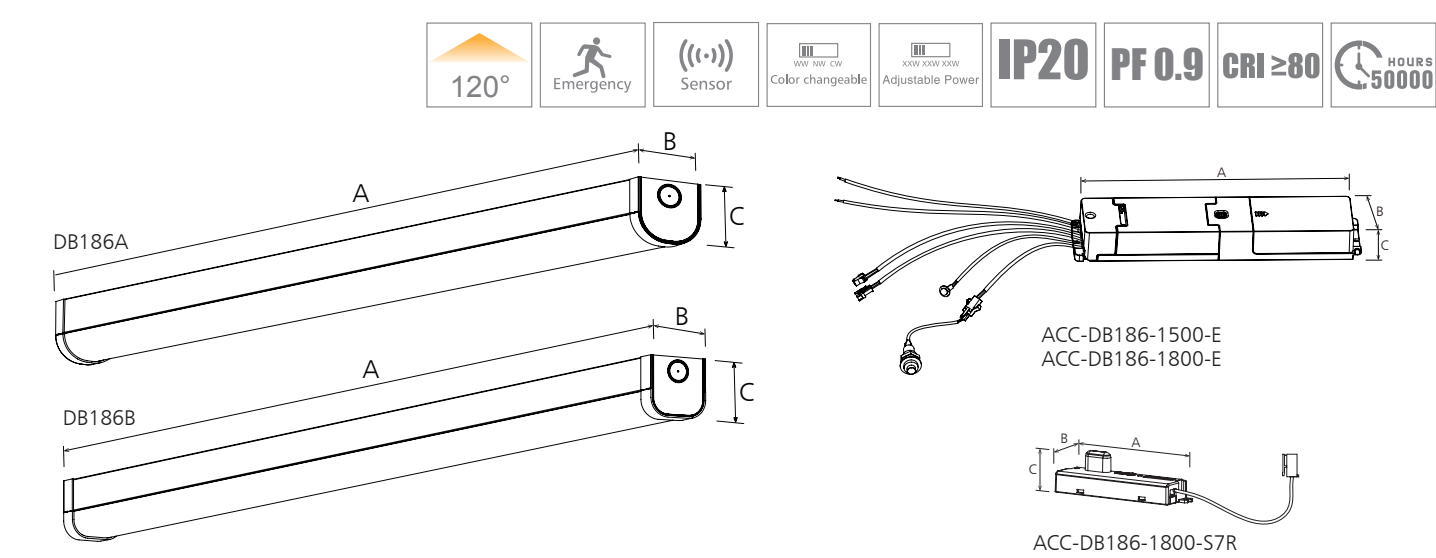
It is widely used in workshop, warehouse, parking lot, factories, shopping mall etc.





Technical Data Sheet

Code			DB186A-1200-40W DB186B-1200-40W	DB186A-1500-50W DB186B-1500-50W	DB186A-1800-60W DB186B-1800-60W	
Dimension(mm)			1200*65*66	1500*65*66	1800*65*66	
Cutout (mm)			-			
Watt(W)			40W@max (optional:35W / 25W / 20W)	50W@max (optional:40W / 35W / 25W)	60W@max (optional:50W / 40W / 30W)	
Rated Input Voltage			AC 220-240V			
Input Voltage			AC 198-264V			
LED Module Input			-			
Light Source			SMD			
SDCM			< 6			
CCT(K)			1-CCT: 3000K/4000K/5000K/5700K 3-CCT: 3000K + 4000K + 5700K			
CCT Selection DIP Switch			YES			
Luminous Flux (lm) ±5% CRI80	1-CCT	Non-DIM	20W: 2800-3100 25W: 3550-3850 35W: 4950-5250 40W: 5600-6000	25W: 3600-3900 35W: 4950-5400 40W: 5650-6100 50W: 7000-7500	30W: 4400-4800 40W: 5600-6000 50W: 7000-7500 60W: 8400-9000	
			20W: 2800-3100 25W: 3550-3850 35W: 4950-5250 40W: 5600-6000	25W: 3600-3900 35W: 4950-5400 40W: 5650-6100 50W: 7000-7500	30W: 4400-4800 40W: 5600-6000 50W: 7000-7500 60W: 8400-9000	
		3-CCT	Non-DIM			
CRI			80			
Beam Angle (°)			120°			
UGR			-			
LED Driver			Driver built-in			
Dimming Option			-			
Sensor			Microwave sensor			
Emergency Kits			YES			
Electrical Class			Class I			
Ingress Protection(IP Rating)			IP20			
Impact Resistance(IK Rating)			IK06			
Product Finishing			White RAL 9016			
Optics Material			PC			
Housing Material			PC / SPCC			
Lifetime (hr)			50,000H			
Glow wire test (°C)			750°C			
Operating Temp.(°C)			-20~40°			
Storage Temp.(°C)			-20~65°			
Installation			Surface mount / Pendant			



Measurement

Code	Dimension(mm)			Size(mm)	Product Weight (Kg)		Package weight (Kg)		Carton Size(cm)	Qty/ CTN	20GP (pcs)	40HQ (pcs)
	A	B	C		N.W/PC	G.W/PC	N.W/CTN	G.W/CTN				
DB186A/B-1200	1200	65	66	1200*65*66	0.95	1.34	5.7	8.88	131.5*24.5*19.5	6	2508	5928
DB186A/B-1500	1500	65	66	1500*65*66	1.14	1.61	6.84	10.66	161.5*24.5*19.5	6	2046	4992
DB186A/B-1800	1800	65	66	1800*65*66	1.33	1.88	7.98	12.44	191.5*24.5*19.5	6	1782	4212
ACC-DB186-1800-S7R	104	26	28	104*26*28	0.03	0.046	2.16	3.72	35*26*22.5	72	99360	220968
ACC-DB186-1500-E	203.5	42	25	203.5*42*25	0.23	0.27	11.50	14.25	47*29*42.5	50	23250	56700
ACC-DB186-1800-E	203.5	42	25	203.5*42*25	0.23	0.27	11.50	14.25	47*29*42.5	50	23250	56700

Driver Datasheet(Non-dimmable)

Total load wattage		40W/35W/25W/20W	50W/40W/35W/25W	60W/50W/40W/30W
Output	Rated output current	270mA@max(optional:230mA / 170mA / 135mA)	335mA@max(optional:270mA / 235mA / 170mA)	420mA@max(optional:360mA / 275mA / 210mA)
	Output Voltage range	DC120-150V		
	Line Regulation	±5%		
	Setup Rise Time	≤0.5S @230V		
	Flickering Index	3%(NO RISK)		
Input	Rated Input Voltage	AC 220-240V		
	Input Voltage	AC198-264V		
	Frequency	50/60Hz		
	Rated Input Current	0.2A	0.25A	0.3A
	Input Current	0.21A	0.27A	0.31A
	Power Factor	≥0.9		
	THD	<20% @230V@ MAX Power		
	Efficiency	≥90%@ MAX Power		
	No load wattage	<1W @ 230Vac		
Protection	Short circuit protection	PASS		
	Over voltage protection	PASS		
	Over temperature protection	PASS		
Safety & EMC	Withstand voltage	-		
	Isolation Resistance	-		
	Surge	IEC/EN61000-4-5 (P≥25W L-N:1KV, L/N-PE:2KV)		
	EMC Emission	EN55015, EN61000-3-2		
		EMC Immunity		
		EN61000-4-2,3,4,5,6,8,11; EN61547		

Datasheet (Emergency)

Input power	3W
Discharge power	2W
Rated Input Voltage(V)	AC230V
Frequency	50/60Hz
Input Voltage	AC200-240V
Rated Input Current	≤0.03A
Battery	6.4V 1500mAh (LifepO4)
Lifetime	Over 2000 cycles
Battery duration	≥3hrs
Charge Period	≤24hrs
Emergency switching time	≤1S
Emergency Operating Temp. (°C)	0°C-25°C

Instructions for automatic test option(AT-version)

- 1.Once the unit is powered up it will automaticlly initiate a self test and diagnostics as follows:
- Every 4 seconds: Checks for battery disconnection,charger board fault,lamp failure and transformer failure.
 - Every month: Performs a 3 minutes duration test.
 - Every yeat: Performs a 3 Hours duration test.
- All test functions are factory preset and do not need field adjustment.

2.Dual Colour Indicator LED Status Mesnings

Green	Solid On	Ready/Normal Operation
	Flashing	Testing
Red	Requires Service	
•	One flash, 4 seconds pause	Battery not connected
••	Two flashes, 4 seconds pause	Low battery voltage
•••	Three flashes, 4 seconds pause	Charger board fault
••••	Four flashes, 4 seconds pause	Charger board fault

NOTE:After repairing a service fault,press and hold the test button for 2 seconds to reset the flashing indicator light to green.

3.Manual Testing

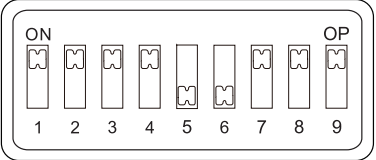
Press test button once	30 seconds duration test
Press test button twice within 2 seconds	3 minutes duration test
Press test button 3 times within 2 seconds	30 minutes duration test
Press test button 4 times within 2 seconds	3 hours duration test

- Note:
- 1) After repairing the fault, press and hold the test button for 2 seconds to reset the flashing indicator light to green.
 - 2) This product should be installed by a registered electrician in accordance with local standards and electrical regulations.
 - 3) Ensure the power supply is under isolated before installation.
 - 4) Sealed LiFePO4 rechargeable battery pack, the battery should be replaced when the required duration is no longer achieved.
 - 5) To avoid any damage to the fixture and ensure its performance, the battery should be replaced with same brand and type.

Datasheet (Sensor)

Operating Voltage	8-12V DC
Power consumption	0.5W±0.2W
Microwave frequency	5.8GHz±75MHz, ISM wave band
Transmission power	<0.5mW
Detection angle	140°
Detection Area	4-6M 100%/75%/50%/25%
Hold time	5S/30S/3min/10min
Daylight sensor	15Lux/50Lux/150Lux/Disable
Stand-by DIM Level	20% / 30%
Stand-by Period	0S/1min/10min /+ ∞
Dimming Range	-
Microwave ON/OFF function	-
Installation Height	Recommended Installation Height: Ceiling mounted height 3m
Minimum mounting dulance	recommended mounting distance should be more than 3m
Operating temperature(°C)	-20°C ~60°C

Sensor Setting:



Factory settings				
Detection Area	Hold Time	Daylight Sensor	Stand-by Period	Stand-by DIM Level
100%	5S	Disable	0S	20%

Detection Area			
	1	2	
I	ON	ON	100%
II	ON	-	75%
III	-	ON	50%
IV	-	-	25%

Detection area:

- Sensor test condition:** The test is based on 3m height, the detect distance radius is based on ground, the detect distance can be adjusted through the slide switch.
- Sensor test environment and reference:** The detective range is measured by human body whose stature is around 1.6-1.7M with medium size and traveling speed is around 1.0-1.5M per second. If the stature, bodily form and traveling speed are changed,then the detective range will be changed accordingly.
- Sensor lamp's reaction under open/narrow environment:** Test result will be highly influenced by test environment, the more open environment, the closer detect distance; the narrower environment, the longer detect distance. The detector may do self-excitation in a narrow environment.
- Sensor Setting based on environmental disturbance:** Some environmental disturbances will cause abnormal induction, such as the lamp can not automatically turn off for a long time or the sensor function is invalid, then users can adjust sensor distance to reach the ideal effect. It is recommended to adjust the sensing distance to 50% for the environment where near the heavy equipment, metal sheets and metal pipes, concretewall(<30cm thickness)etc. Recommend to keep 100%sensordistance in open environment. For environment where near the routers, telecommunications base stations, electrical machinery etc, it is recommended to keep the installation distance of more than 5 meters and adjust to 50% sensor distance.

Hold Time			
	3	4	
I	ON	ON	5S
II	ON	-	30S
III	-	ON	3min
IV	-	-	10min

Hold time:

- Notice 1:** The hold time can be selected by the slide switch.
- The hold time counting should be started after the sensor is powered on and initialized.

Daylight Sensor				
	5	6	Open	Close
I	ON	ON	15Lux	150Lux
II	ON	-	50Lux	150Lux
III	-	ON	150Lux	300Lux
IV	-	-	Disable	Disable

Daylight sensor:

- Notice 1:** The light threshold can be selected through the slide switch, it may cause a large deviation in different lamps.
- Notice 2:** Daylight priority function: Set stand-by period to + ∞, daylight sensor will be priority status. When the ambient light is lower than the daylight sensor setting lux, the lamp will turn on automatically if it detects a moving object. After the moving object leaves, the sensor will enter into stand-by Dim Level, if ambient light is more than ON/OFF lux, the lamp will keep OFF status.

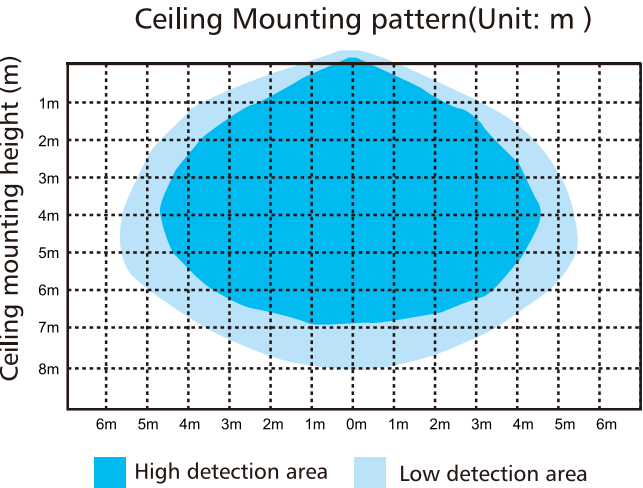
Stand-by Period			
	7	8	
I	ON	ON	0S
II	ON	-	1min
III	-	ON	10min
IV	-	-	+∞

Stand-by Period:

Notice: Be daylight priority when setting to “+∞”

Stand-by DIM Level		
	9	
I	ON	20%
II	-	30%

Detection Range Diagram

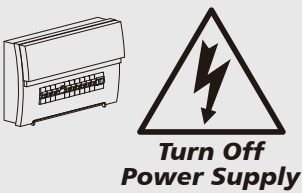


Function Table	DB186A-1200-40W DB186B-1200-40W	DB186A-1500-50W DB186B-1500-50W	DB186A-1800-60W DB186B-1800-60W
Non-dim Wattage Switchable	√	√	√
Non-dim Wattage Switchable + CCT Switchable	√	√	√
Non-dim Wattage Switchable + Emergency	√	√	√
Non-dim Wattage Switchable + CCT Switchable + Emergency	√	√	√
Sensor + CCT Switchable	√	√	√
Non-dim Wattage Switchable + CCT Switchable + Sensor	√	√	√
Non-dim Wattage Switchable + Emergency + Sensor	√	√	√
Non-dim Wattage Switchable + CCT Switchable + Emergency + Sensor	√	√	√


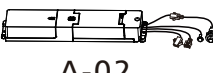


Installation Procedure

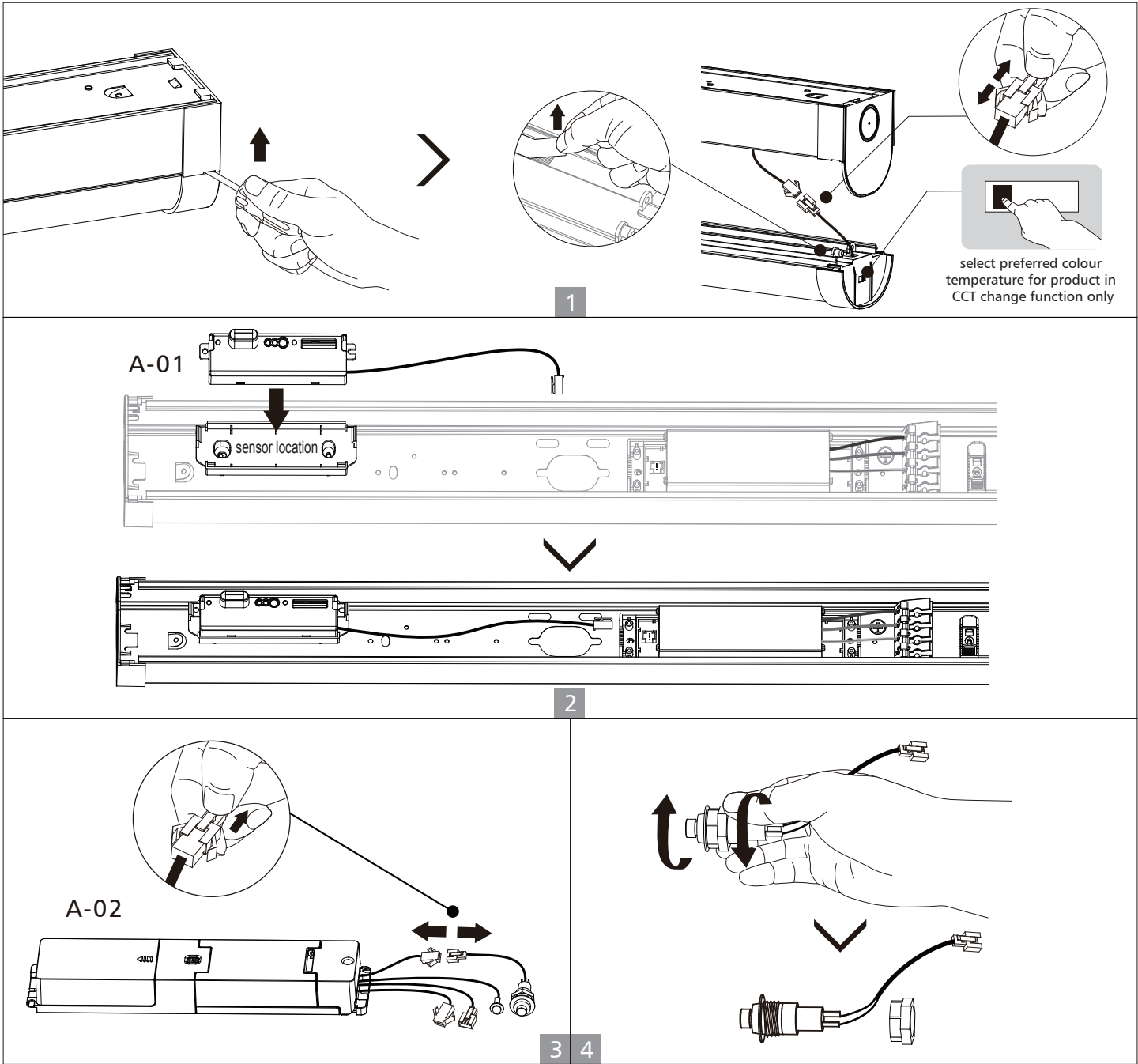
WARNING

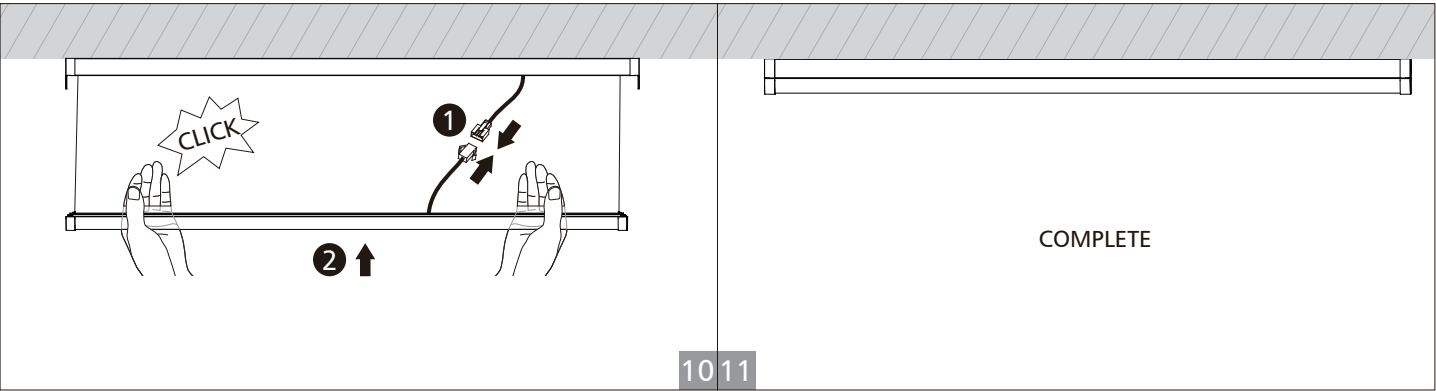
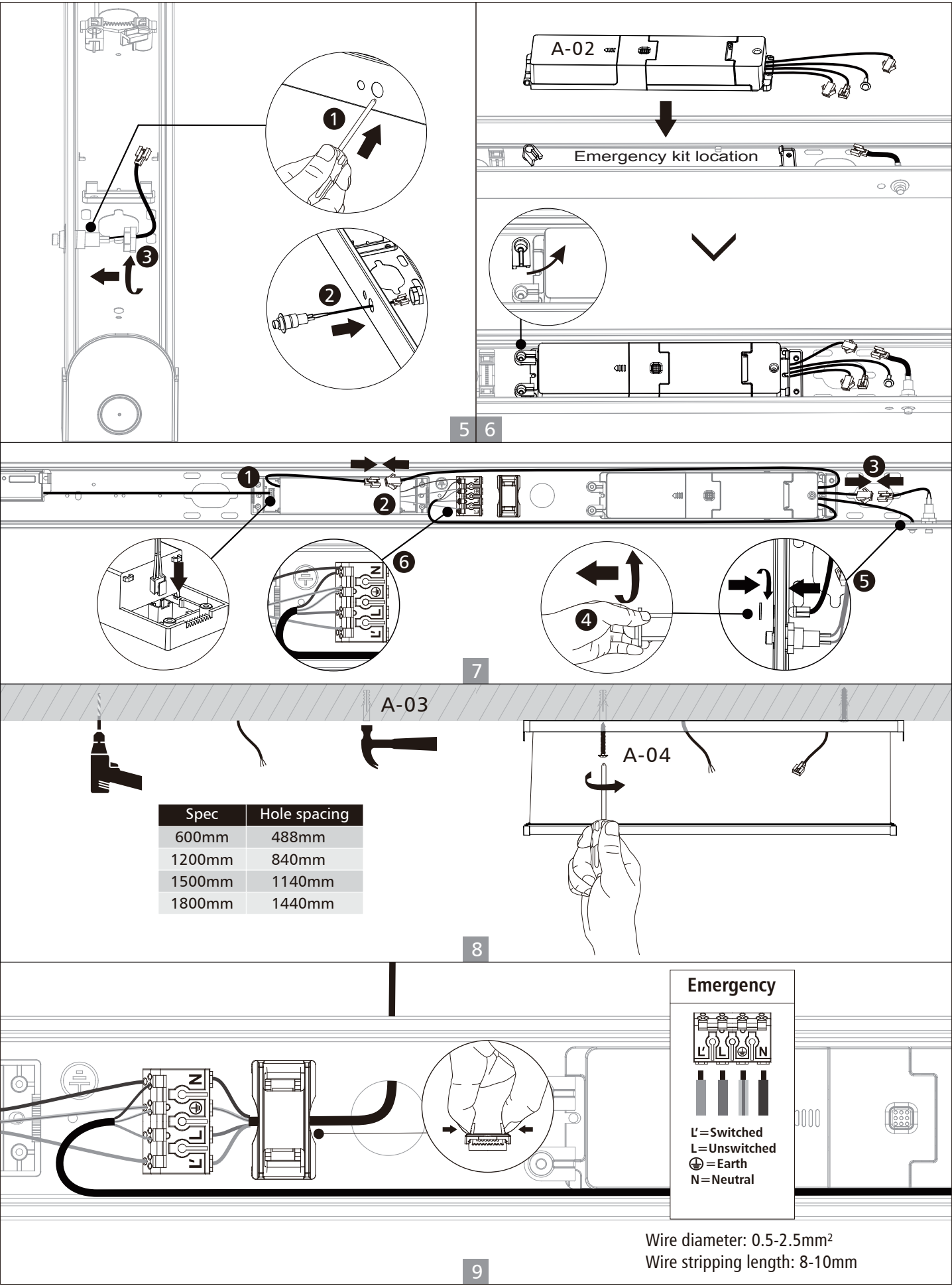
- 1.Switch off before installation.
- 2.Switch on only after complete installation and examination of the circuit.
- 3.Professional electrician for installation and maintenance only.



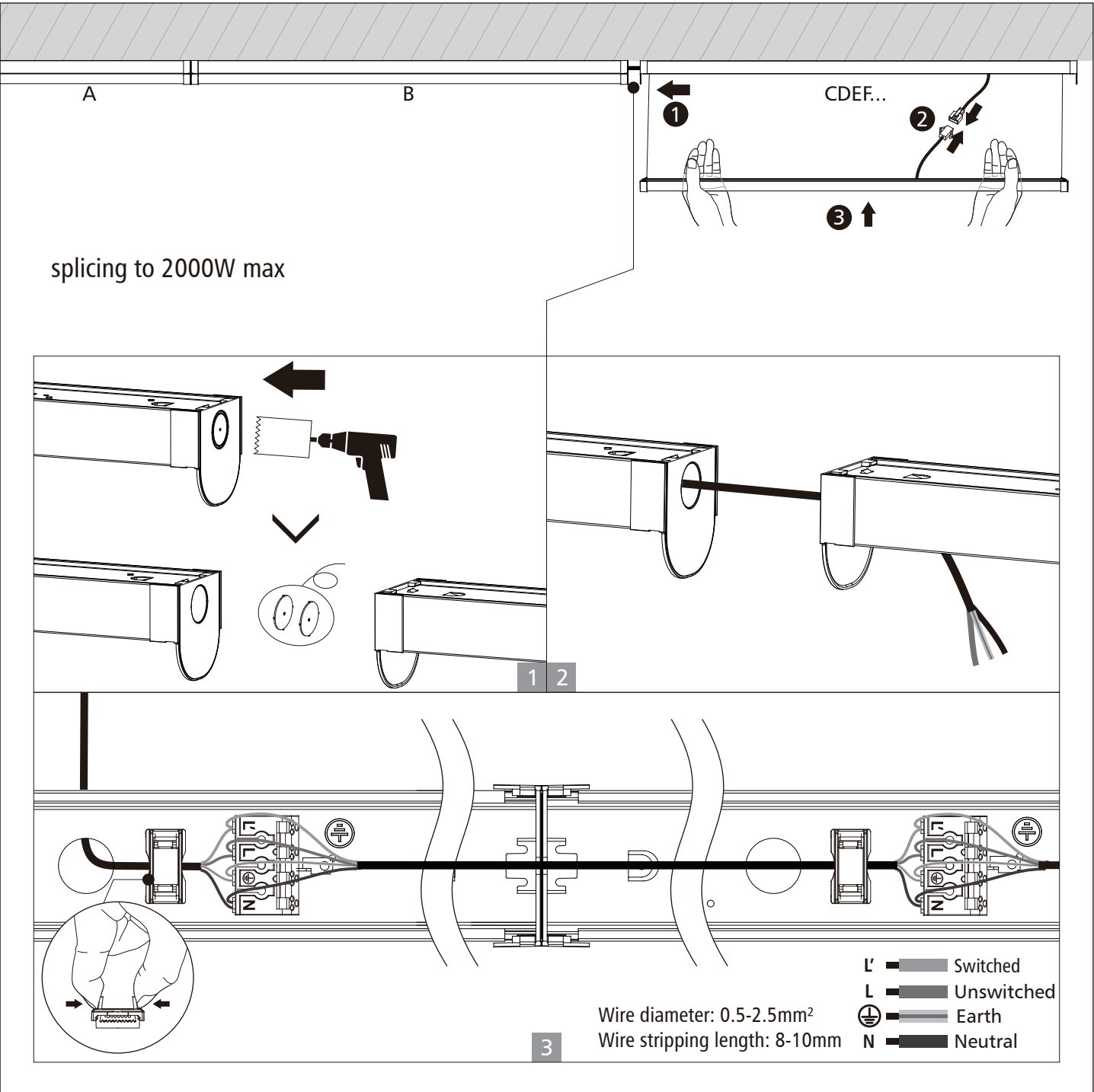
Surface mount installation

Code	 A-01	 A-02	A-03 	A-04 
ACC	X1	X1	X2	X2









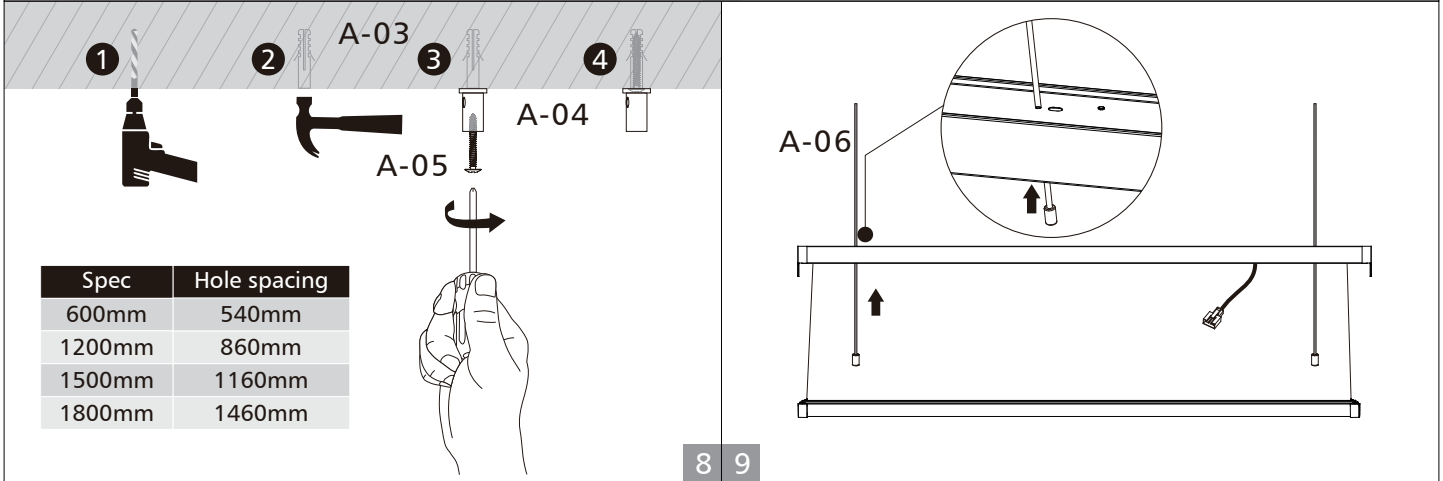
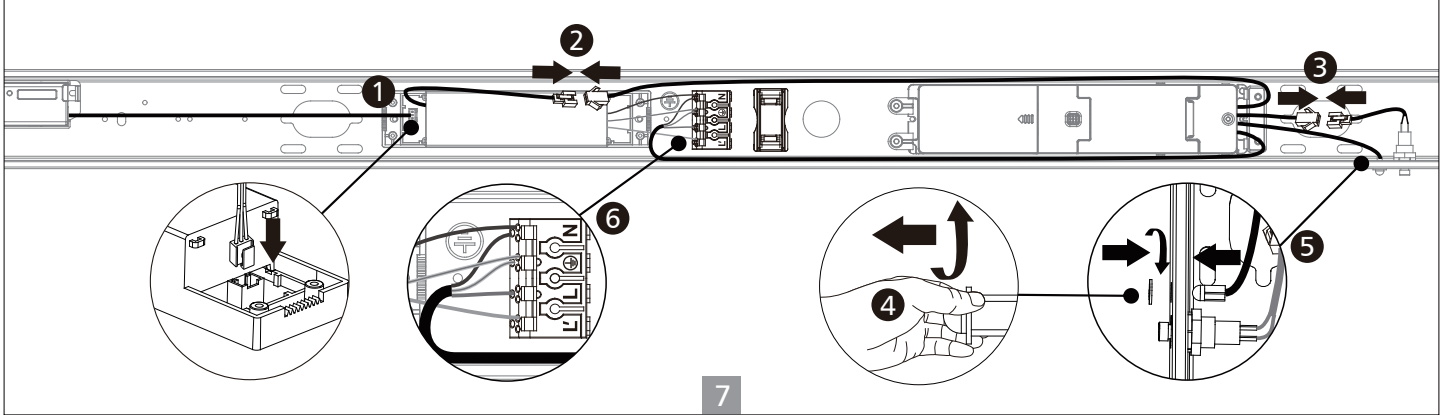
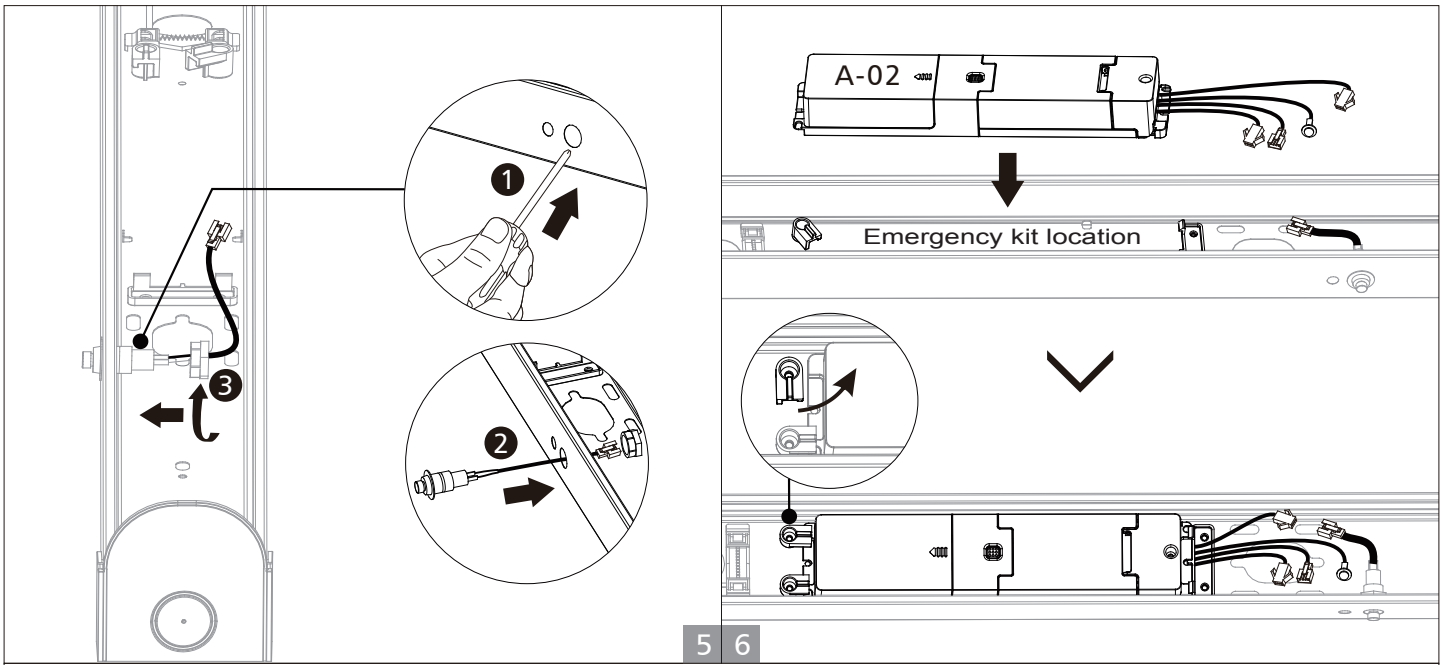
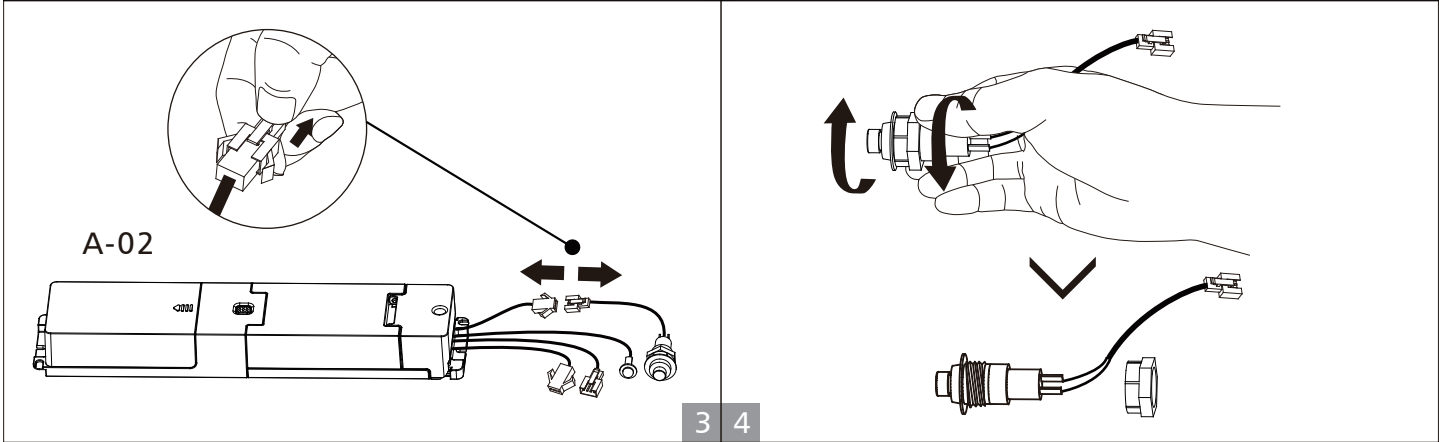
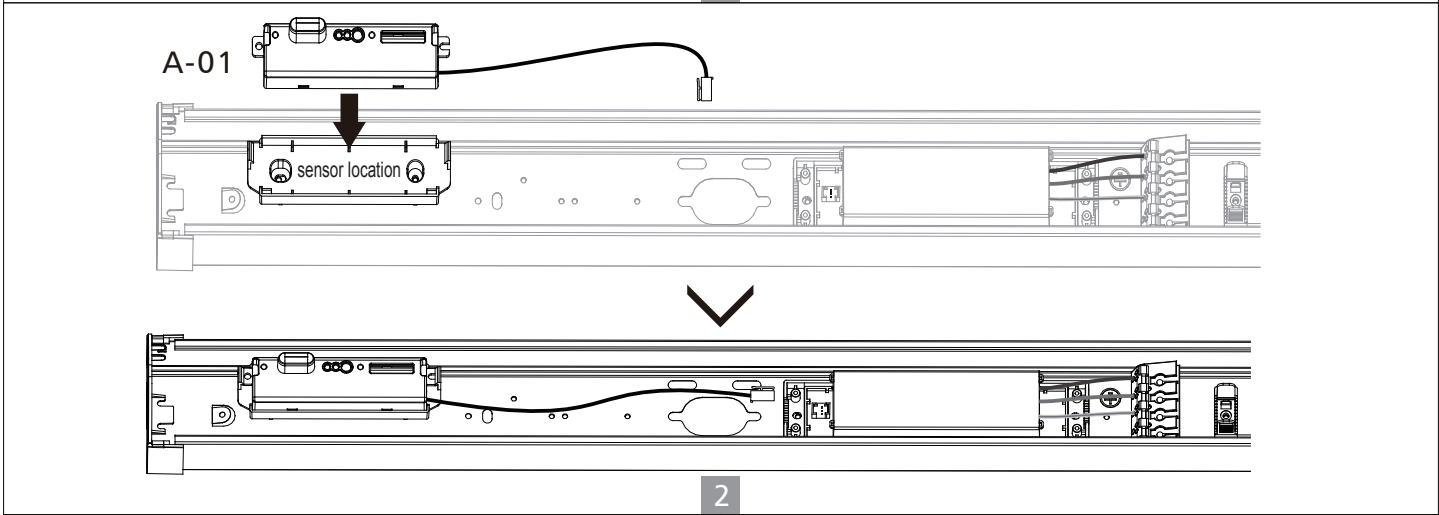
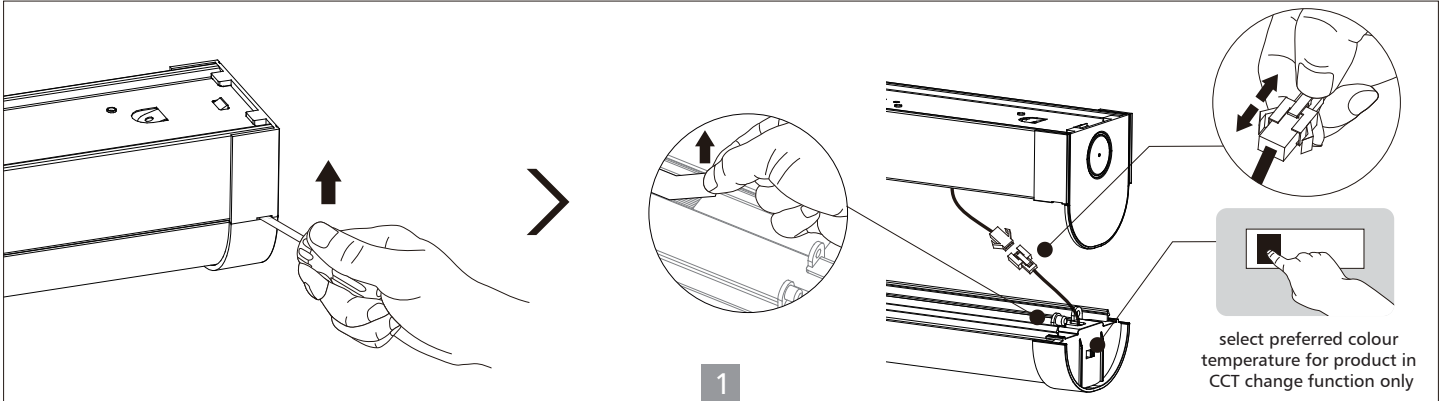


Splicing for surface mount installation

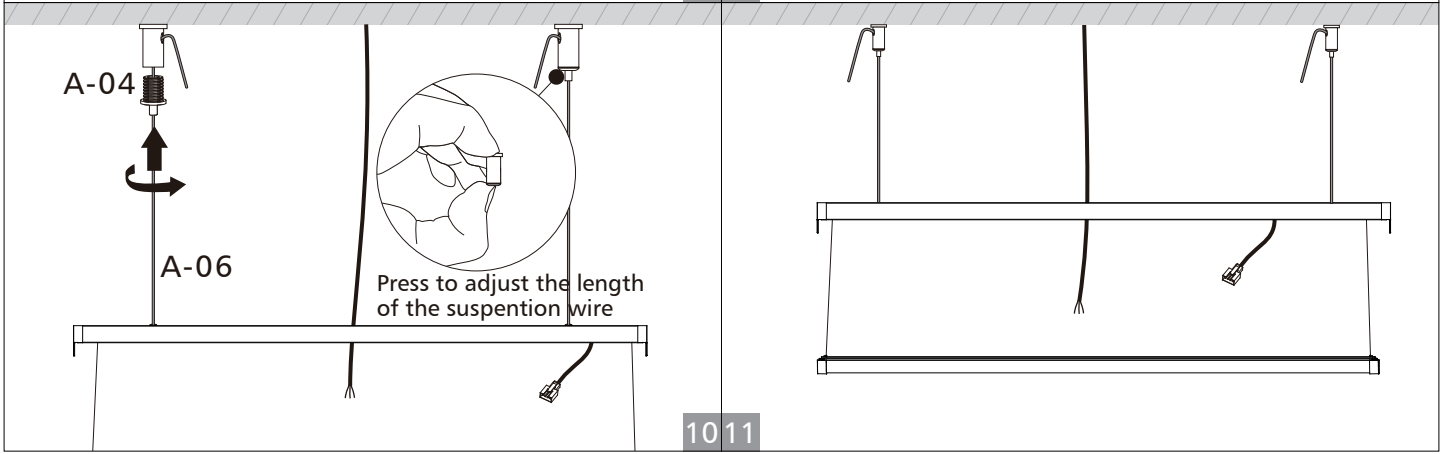


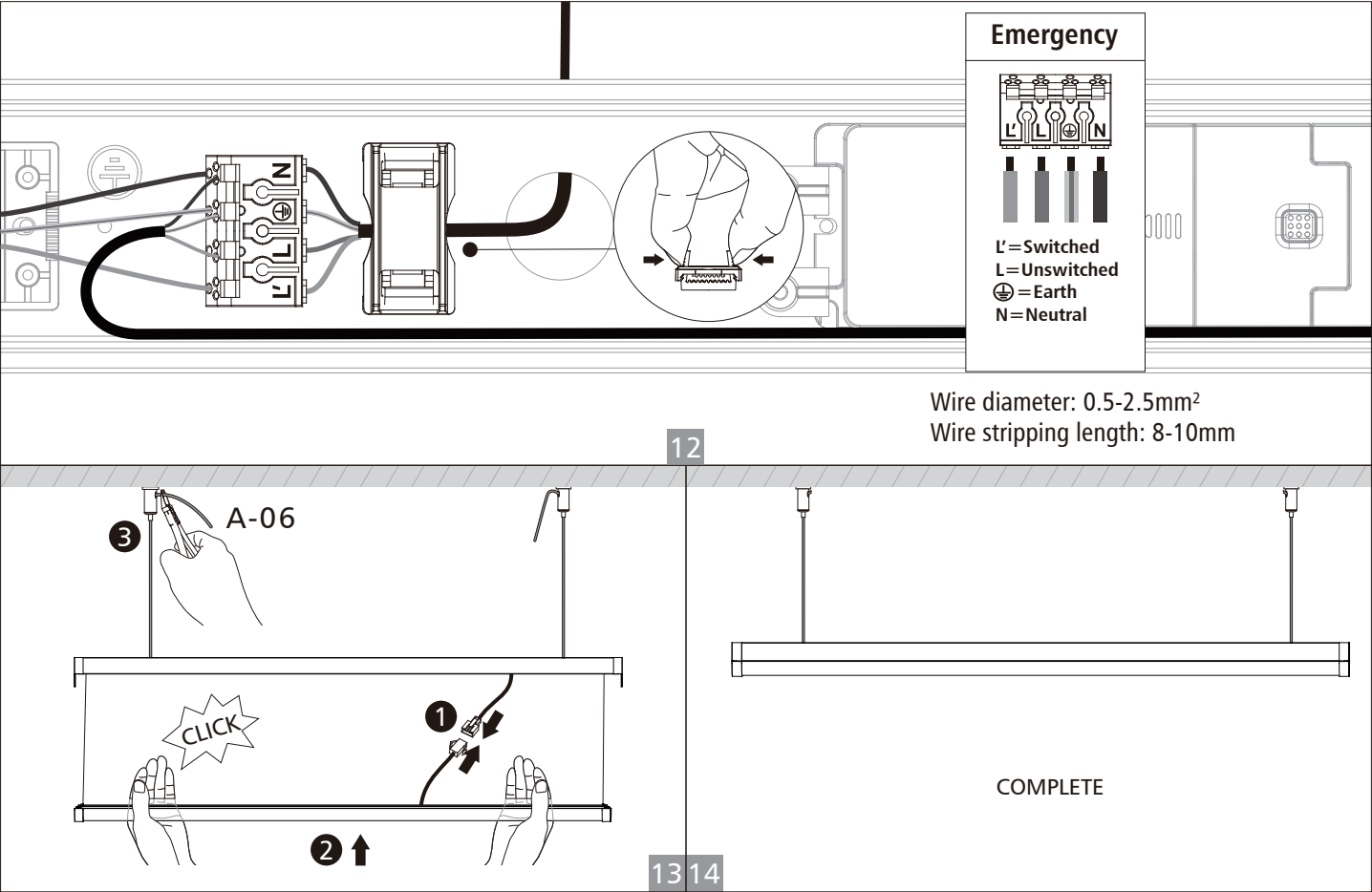
■ Pendant installation

Code	 A-01	 A-02	 A-03	 A-04	 A-05	 A-06
ACC	X1	X1	x2	x2	x2	x2



Spec	Hole spacing
600mm	540mm
1200mm	860mm
1500mm	1160mm
1800mm	1460mm







UPSHINE | *Up to Shine, there is life*
光之上，是生活

▼ www.upshine.com info@upshine.com TEL: +86 755 2919 7332 ▼

Add: 2nd building Dingfeng High-Tech Zone, Fuyuan 1st road, Fu Yong Sub-district, Bao'an, Shenzhen China