

Entry / ECO

Standard / STD

Professional / PRO

ODM & OEM

Intelligent / INT



LED Vapor proof  
DB145 Series







# Introduction

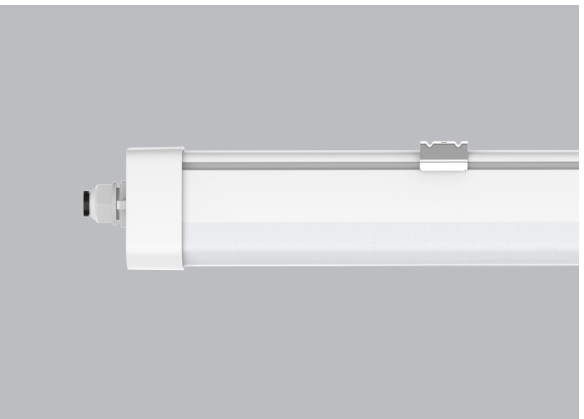
DB145 is a high quality LED Vapor proof with high luminous efficacy 150lm/w. With a reliable and robust housing structure (IK08 & IP65), this maximizes the endurance and contributes to its long lifetime. With its flexible installation accessories, it can install as surface mounting, pendant and splicing, which can be used in a wider applications. Three size options: 1200mm, 1500mm, 1800mm, it's an ideal replacement for traditional fluorescent Vapor proof.

# Features

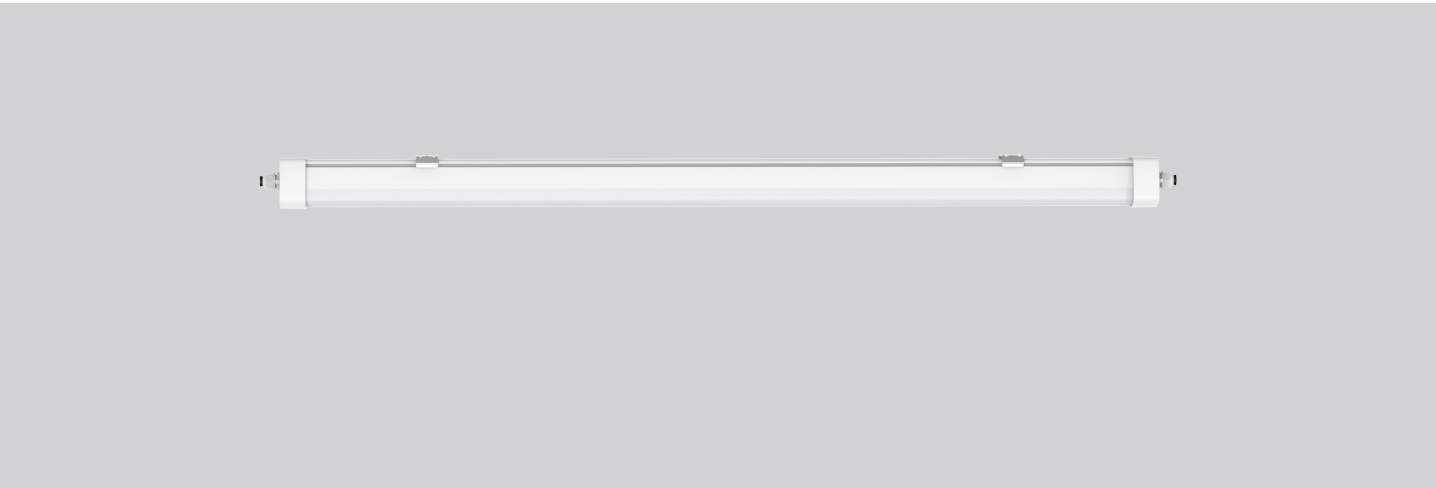
- Compact design, suitable for both indoor and outdoor applications.
- IP65 waterproof, IK08 impact protection.
- Lifespan: approx. 50,000 hours.
- End caps: made of shockproof polycarbonate (PC).
- Flexible installation through sliding mounting bracket.
- Splicing, Sensor, Emergency and interchangeable CCT available.
- Tool free mains cable installation on both sides through twist lock fastener cover at both sides.

# Application Areas

This linear fixture is widely used in shopping mall, office, car park, station, home.

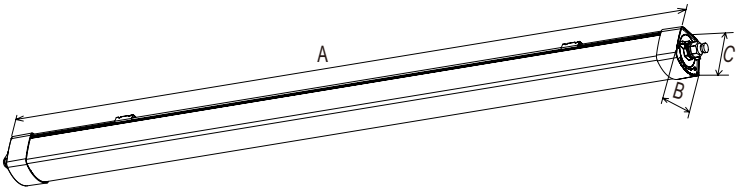






Technical Data Sheet

Code No.			DB145-1200-38W	DB145-1500-52W	DB145-1500-68W	DB145-1800-68W
Dimension(mm)			1200*77*69	1500*77*69		1800*77*69
Cutout (mm)			-			
Watt(W)			38W	52W	68W	68W
Rated Input Voltage(V)			AC230V			
Input Voltage(V)			AC220-240V			
LED Module Input			-			
Light Source			SMD			
SDCM			<6			
CCT(K)			1-CCT: 3000K/4000K/5000K/5700K    3-CCT:3000K+4000K+5700K			
CCT Selection DIP Switch			Yes			
Luminous Flux (lm) ±5%	Non-DIM	1-CCT	5200-5600	7500-7900	9200-9800	9200-9800
	DIM		5000-5500	7300-7700	—	9000-9600
	Non-DIM	3-CCT	5200-5700	7500-8000	—	9200-10000
	DIM		5000-5500	7300-7900	—	9000-9800
CRI			80			
Beam Angle (°)			120°			
UGR			—			
LED Driver			Built-in			
Dimming Option			DALI			
Sensor			Microwave sensor+Daylight sensor			
Emergency Kits			Yes			
Electrical Class			Class I I			
Ingress Protection (IP Rating)			IP65			
Impact Resistance (IK Rating)			IK08			
Product Finishing(Base)			White RAL9016			
Materials of Optics			PC			
Materials of Housing			PC			
Lifetime (hr)			50,000h			
Glow wire test (°C )			750°C			
Operating Temp. (°C )			-20°C ~40°C			
Storage Temp. (°C )			-20°C ~60°C			
Installation			Surface mount/ Pendant			



Measurement

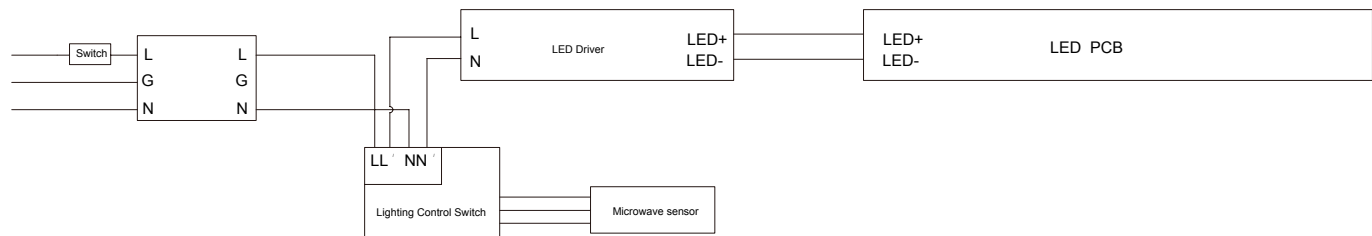
Code	Dimension(mm)			Size(mm)	Product Weight (Kg)		Package weight (Kg)		Carton Size(cm)	Qty/ CTN	20GP (pcs)	40HQ (pcs)
	A	B	C		N.W/PC	G.W/PC	N.W/CTN	G.W/CTN				
DB145-1200-38W	1200	77	69	1200*77*69	1.7	1.8	10.2	13	133*25*18.5	6	2676	6390
DB145-1500-52W	1500	77	69	1500*77*69	2.1	2.3	12.6	16	163*25*18.5	6	2166	5382
DB145-1500-68W	1500	77	69									
DB145-1800-68W	1800	77	69	1800*77*69	2.3	2.6	13.8	18	193*25*18.5	6	1998	4620

Driver Datasheet (Non-Dimmable)

Total load wattage		38W		52W		68W	
Output	Output Voltage range	DC80-110V	DC28-42V	DC100-150V	DC28-42V	DC110-160V	DC60-75V
	Rated output current	370mA	950mA	400mA	1500mA	500mA	950mA
	Line Regulation	±5%					
	Setup, Rise Time	<0.5s @230V					
	Flickering Index	0.6% (NO RISK)	-	0.2% (NO RISK)	-	0.3% (NO RISK)	-
Input	Input Voltage	AC200-240V					
	Rated Input Voltage(V)	AC220-240V					
	Frequency	50/60Hz					
	Input Current	≤0.23A	≤0.23A	≤0.36A	≤0.36A	≤0.47A	≤0.45A
	Rated Input Current	≤0.21A	≤0.21A	≤0.29A	≤0.31A	≤0.37A	≤0.37A
	Power Factor	≥0.9					
	THD	<20% @230V					
	Efficiency	≥90%	≥87%	≥90%	≥87%	≥90%	≥89%
	No load wattage	—					
Protection	Short circuit protection	Pass					
	Over voltage protection	Pass					
	Over temperature protection	Pass					
Safety &EMC	Withstand voltage	I/P-FG:1.6KVac, <5mA 60SI					
	Isolation Resistance	I/P-PG,O/P-PG: 500VDC, ≥100M Ω					
	Surge	IEC/EN61000-4-5 (P≥25w L-N:1KV, L/N-PE:2KV)					
	EMC Emission	EN55015, EN61000-3-2					
	EMC Immunity	EN61000-4-2,3,4,5,6,8,11; EN61547					



Wiring Diagram(Sensor):



Daylight & Microwave Sensor:

Sensor Setting:

Detection Area	
1	
-	100%
ON	50%

Hold Time			
2	3	4	
-	-	-	5S
-	-	ON	30S
-	ON	-	1min
ON	-	-	3min
-	ON	ON	5min
ON	-	ON	10min
ON	ON	-	15min
ON	ON	ON	20min

Daylight Sensor		
5	6	
-	-	disable
-	ON	10lux
ON	-	30lux
ON	ON	50lux

Detection area:

Detection area can be reduced by selecting the combination on the DIP switches to fit precisely each application.

Notice 1: The test is based on a height of 3m, the radius is the ground detect distance,which can be selected through the slide switch.

Notice 2: The detective range is measured by human body whose stature is around 1.6-1.7M with medium size and traveling speed is around 1.0-1.5M per second. If the stature, bodily form and traveling speed are changed,then the detective range will be changed accordingly.

Notice 3: Test result will be highly influenced by test environment, the more open environment, the closer detect distance; the narrower environment, the longer detect distance. The detectormay do self-excitation in a narrow environment.

Hold time:

Refers to the time period the lamp remains at 100% illumination after no motion detected.

Notice 1: The hold time can be selected by the slide switch.

The hold time counting should be started after the sensor is powered on and initialized.

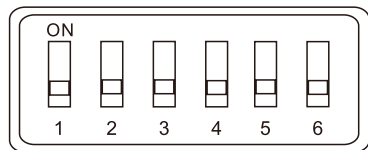
Daylight sensor:

The sensor can be set to only allow the lamp to illuminate below a defined ambient brightness threshold.When set to Disable mode, the daylight sensor will switch on the lamp when motion is detected regardless of ambient light level.

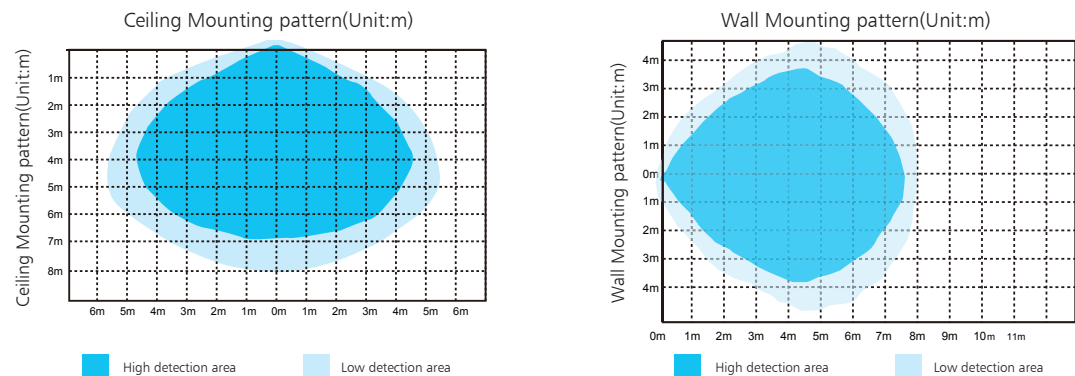
Notice 1: The light threshold can be selected through the slide switch, it may cause a large deviation in different lamps.

Factory settings:

Detection Area	Hold Time	Daylight Sensor
100%	5S	Disable



Induction Range



Installation Procedure

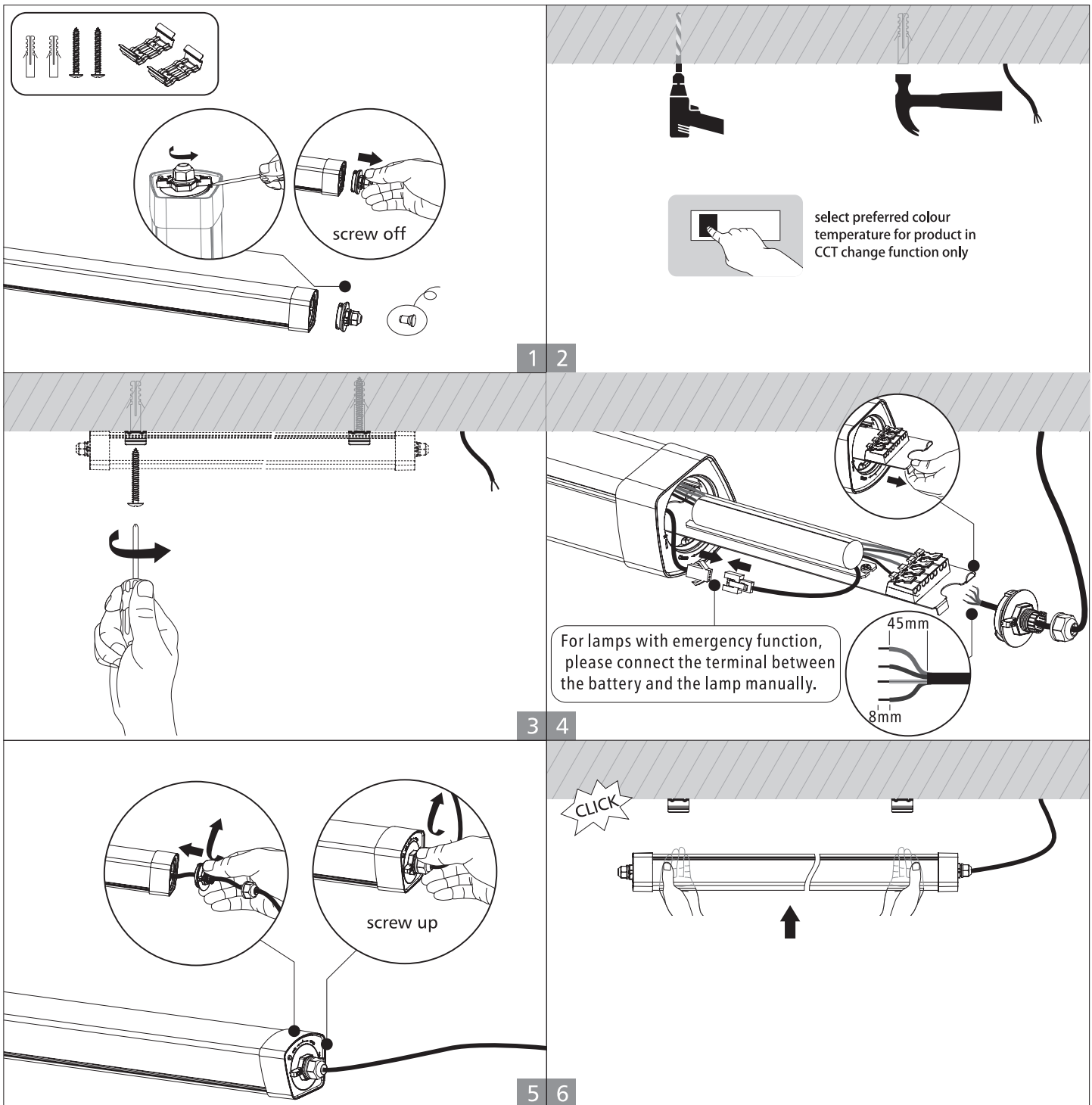
WARNING

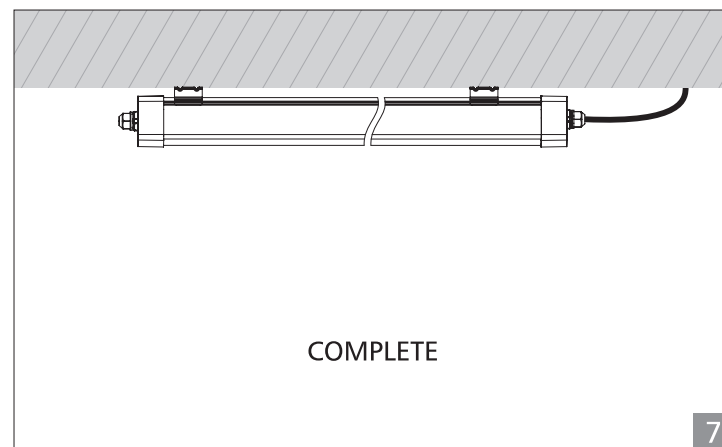
- 1.Switch off before installation.
- 2.Switch on only after complete installation and examination of the circuit.
- 3.Professional electrician for installation and maintenance only.



Turn Off power supply before starting any installation. Read instructions & check you have all the tools & accessories to complete the installation correctly.

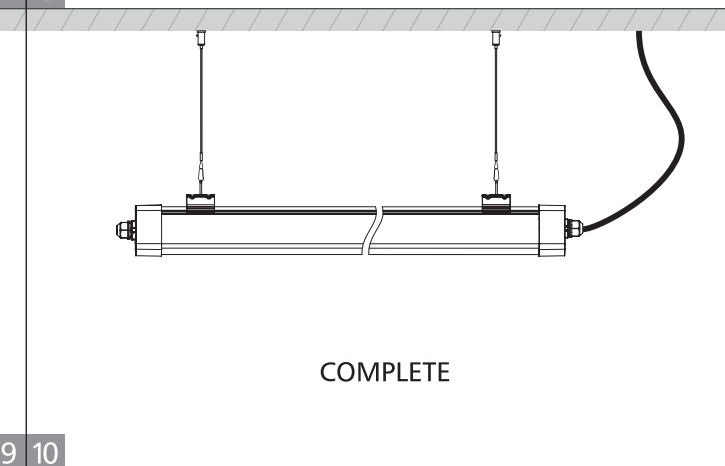
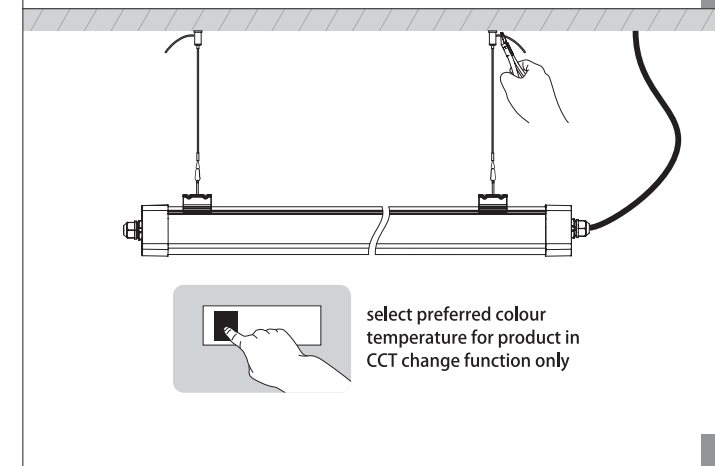
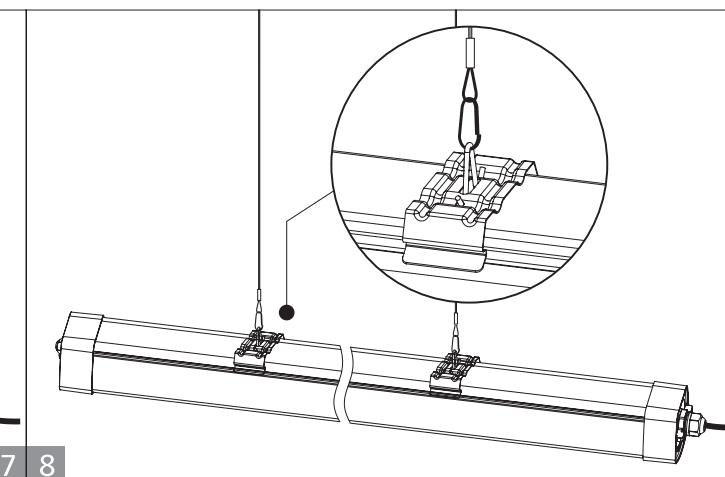
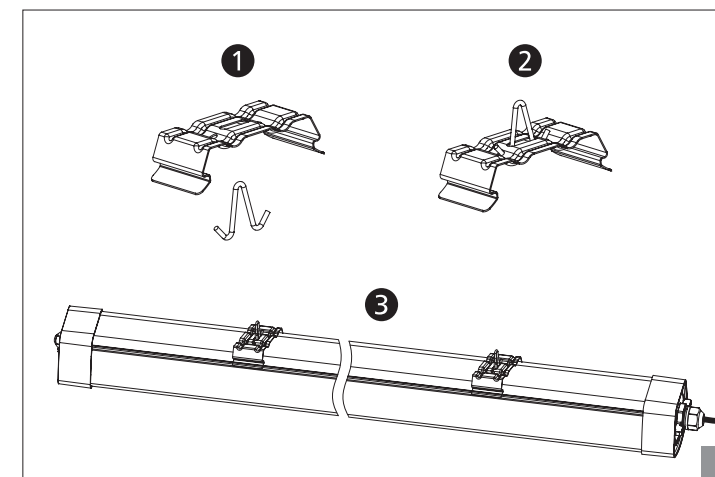
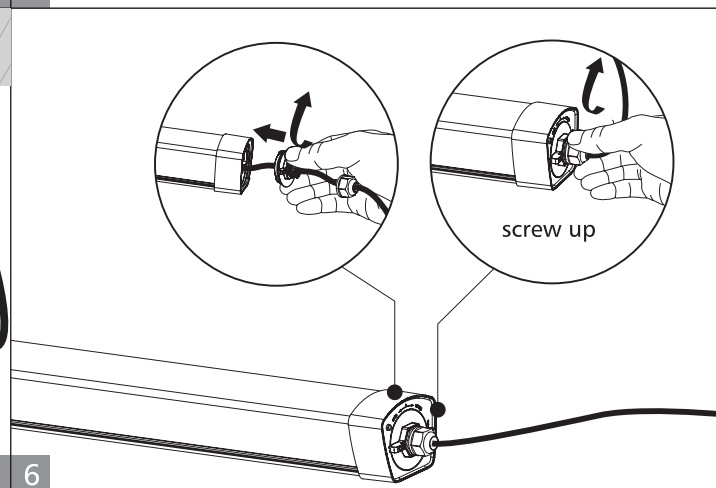
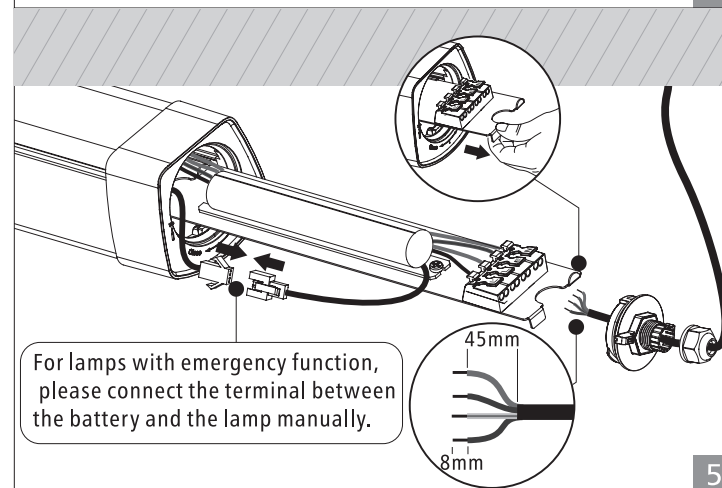
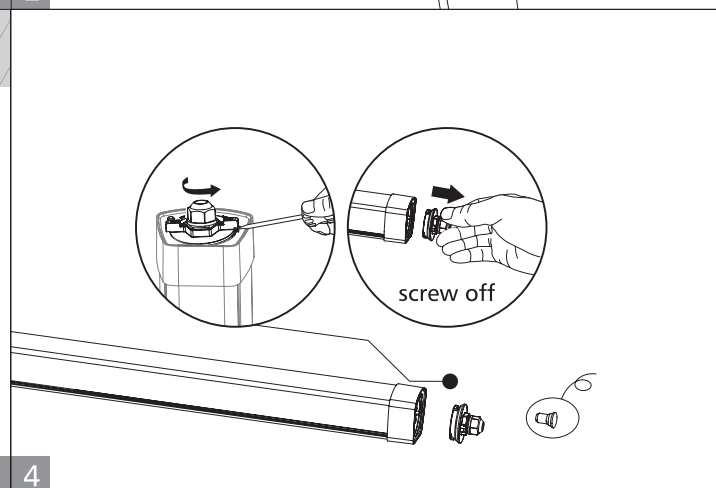
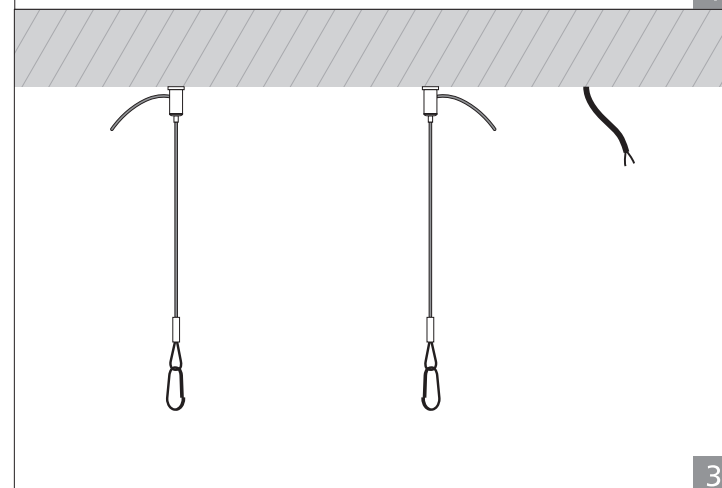
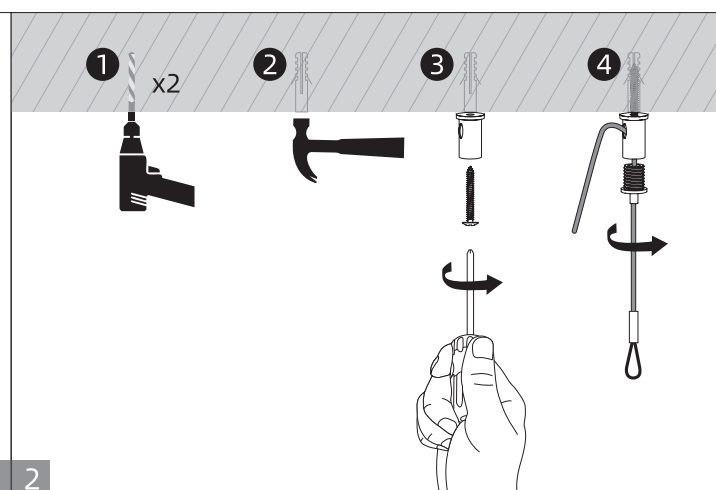
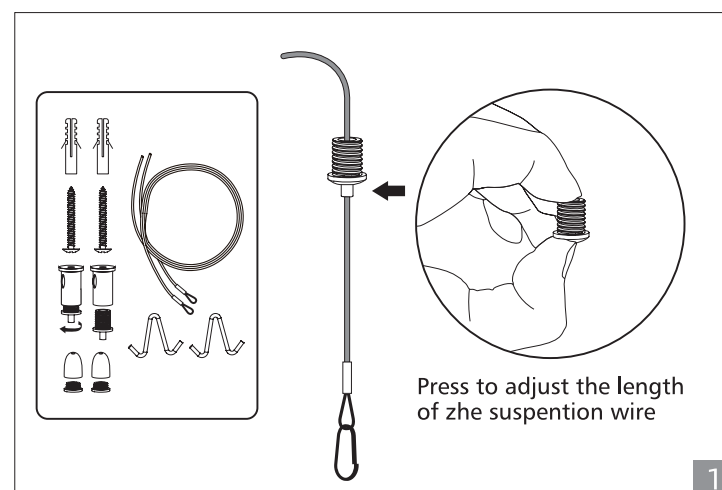
Surface mounted installation



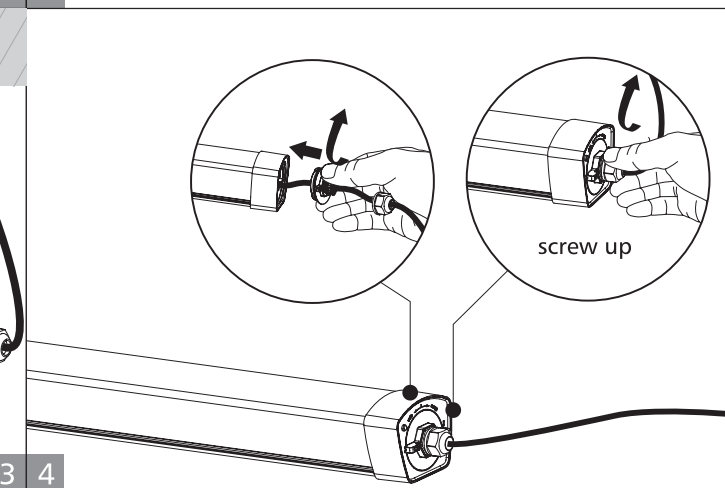
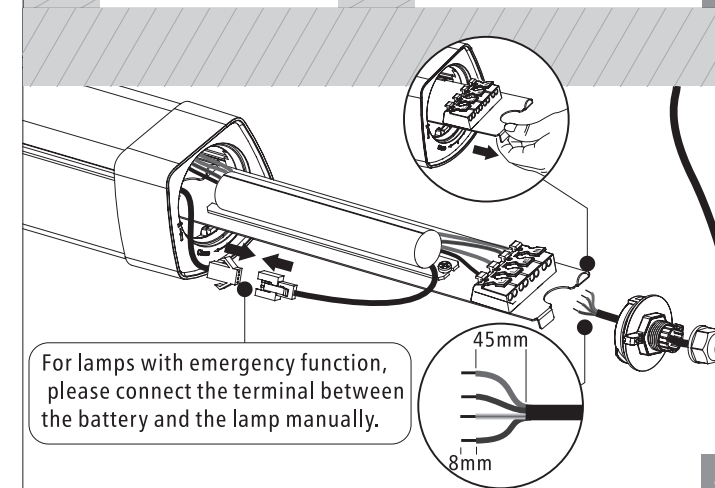
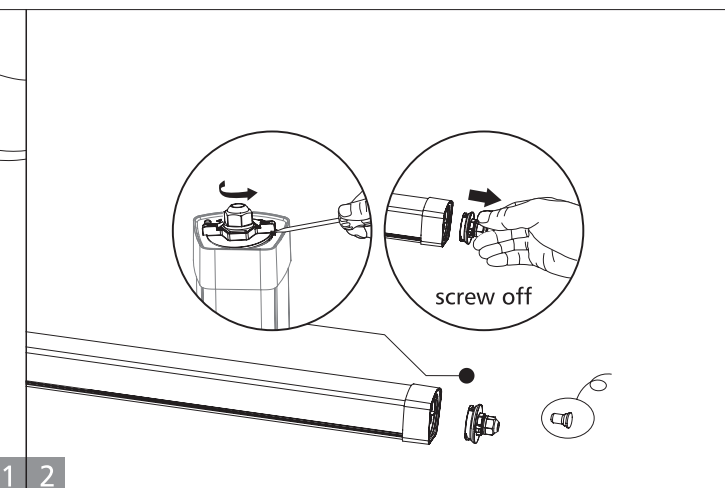
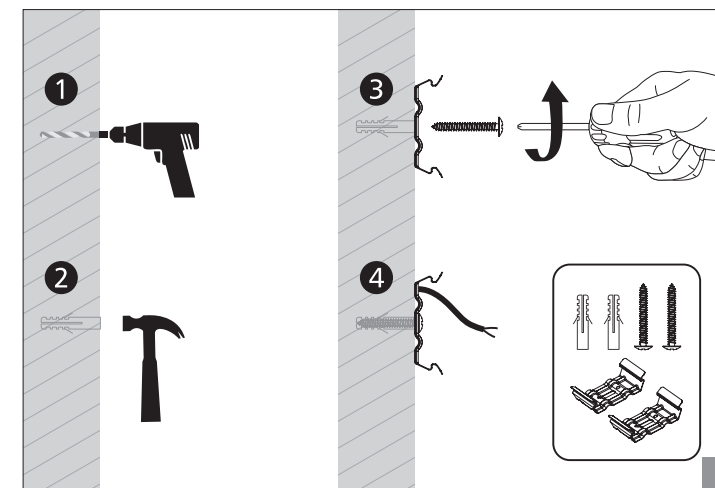


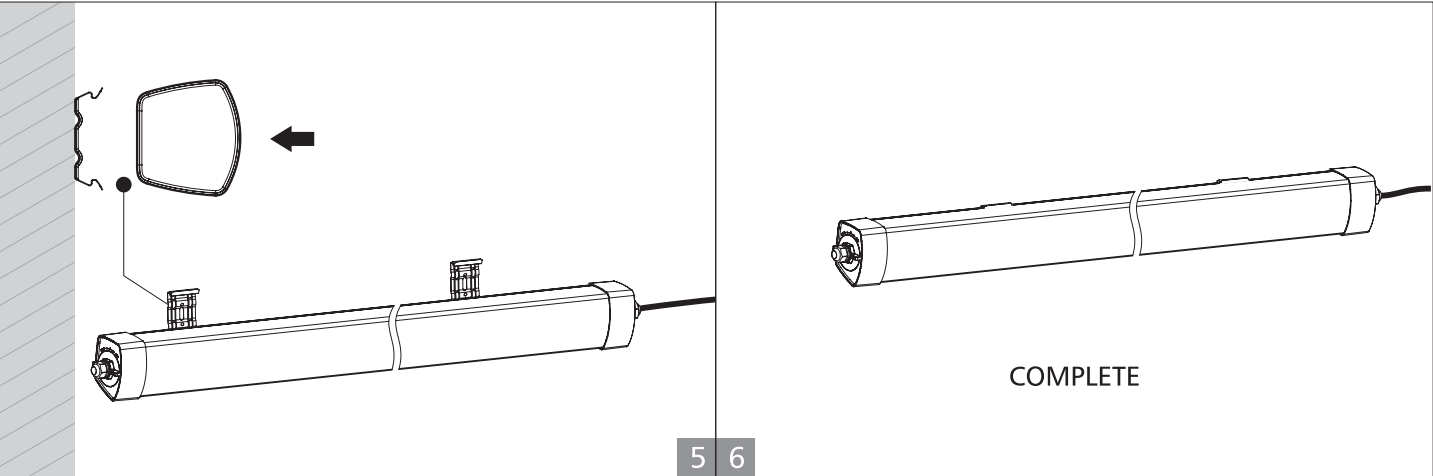
Standard/Sensor	Emergency	DALI
<p>N=Neutral E=Earth L=Switched</p>	<p>L'=Switched L=Unswitched E=Earth N=Neutral</p>	<p>L=Switched E=Earth N=Neutral DA=DIM+ DA=DIM-</p>

## Suspended installation



## Wall mounted installation





■ Splicing for installation

L — Unswitched  
E — Earth  
N — Neutral

ART-NR		38W	52W	68W
Linkable luminaries Qty	220-240V	27	20	15

■ Replace battery

1 2

3 4

new  
old

Waste battery recycling





*Up to Shine, there is life* 光之上，是生活

▼ [www.upshine.com](http://www.upshine.com) [info@upshine.com](mailto:info@upshine.com) TEL: +86 755 2919 7332 ▼

Add: 2nd building Dingfeng High-Tech Zone, Fuyuan 1st road, FuYong Sub-district, Bao'an, Shenzhen China