

LED Ceiling Light
AL166 Series



Introduction

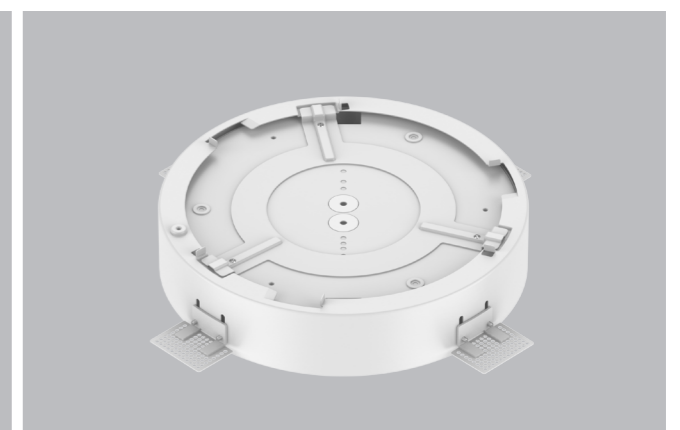
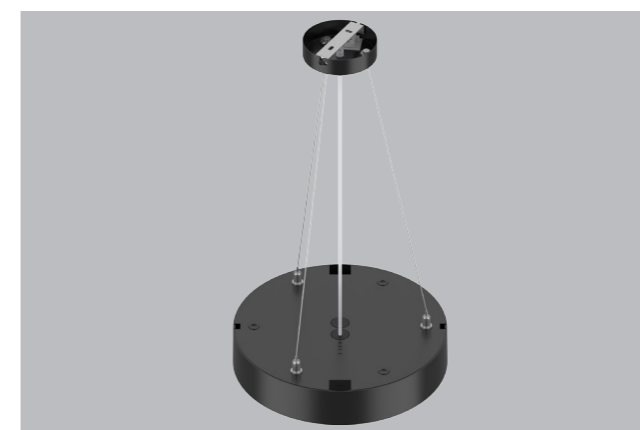
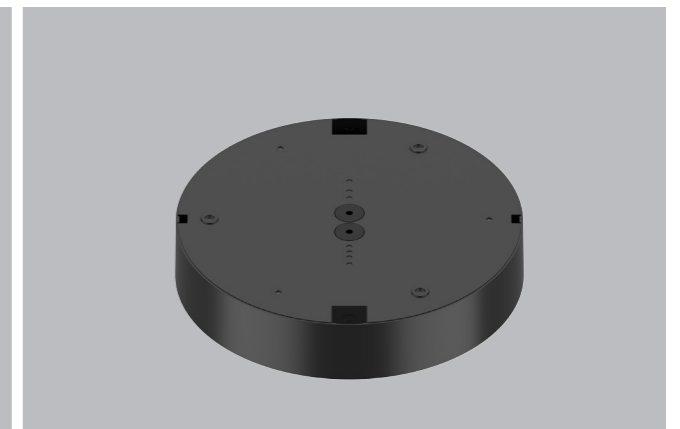
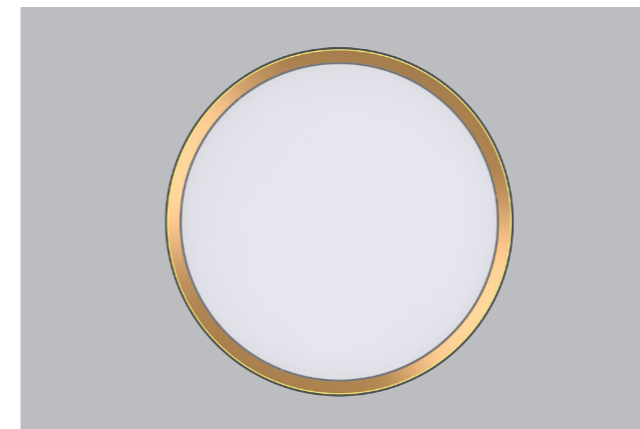
The round, minimalist LED ceiling light is versatile in its use. Due to its simple appearance, it fits into a wide variety of interiors with surface mounted, suspended and recessed installation ways. Aluminum housing(white/black) can be matched with black/white/golden decorative ring, which makes this light look elegant and textured. Opal diffuser(UL94-V2) for general lighting with maximum transmittance and homogeneous lighting.

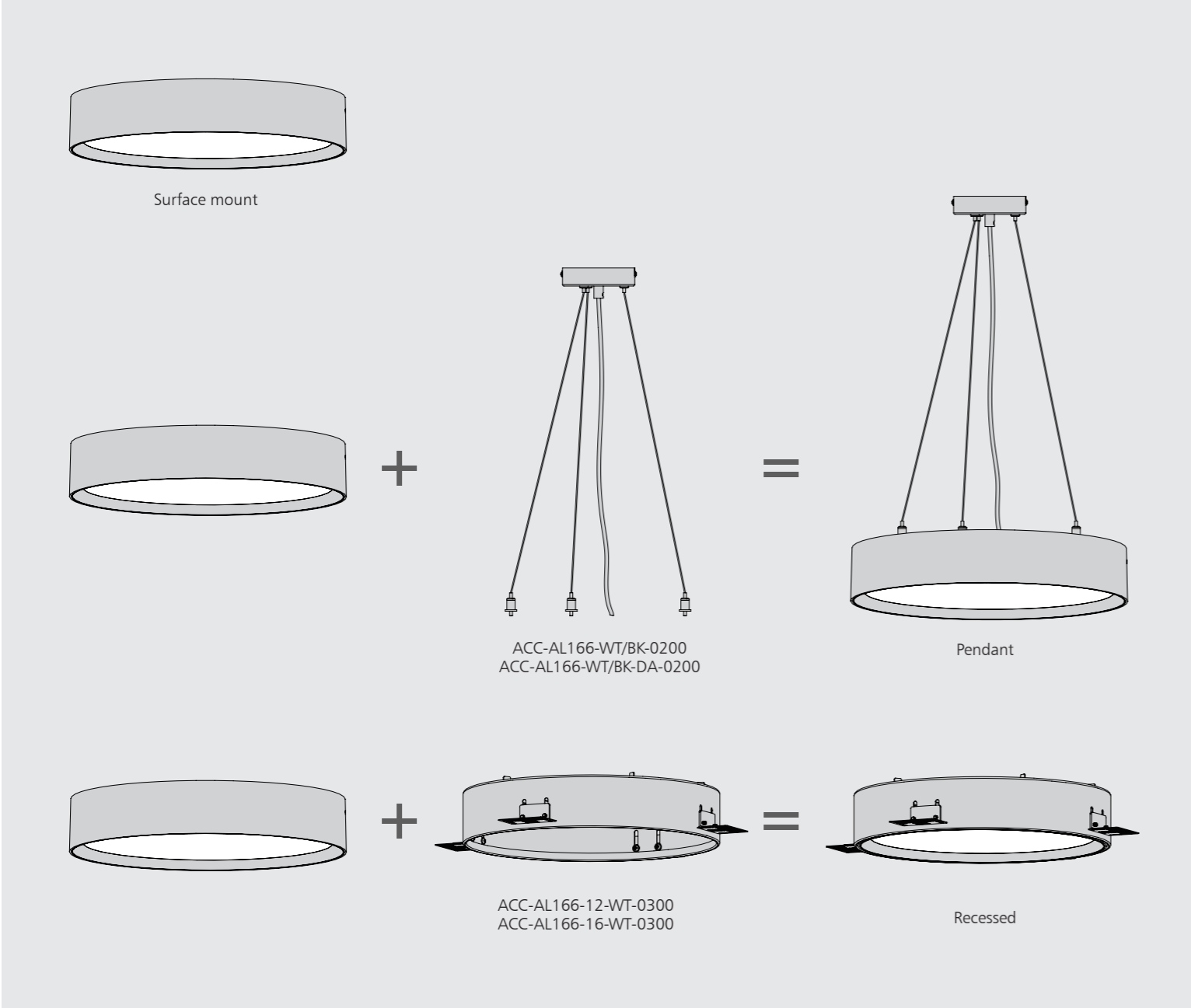
Features

- Multiple appearance option with black/white/golden decorative ring.
- Interchangeable CCT(3000K+4000K+5700K)with slide switch.
- Size: Ø301*58mm, Ø422*58mm.
- IP44 waterproof.
- ADC12 aluminum housing provides a great thermal management.
- Internal flicker free driver.
- Triac dimming and DALI dimming are optional.
- Adjustable sensor

Application Areas

It is designed for general lighting indoor applications: hotel, home, canteen, office, supermarket, shopping mall etc.





Triac Dimmable

DALI Dimmable

120°

IP44

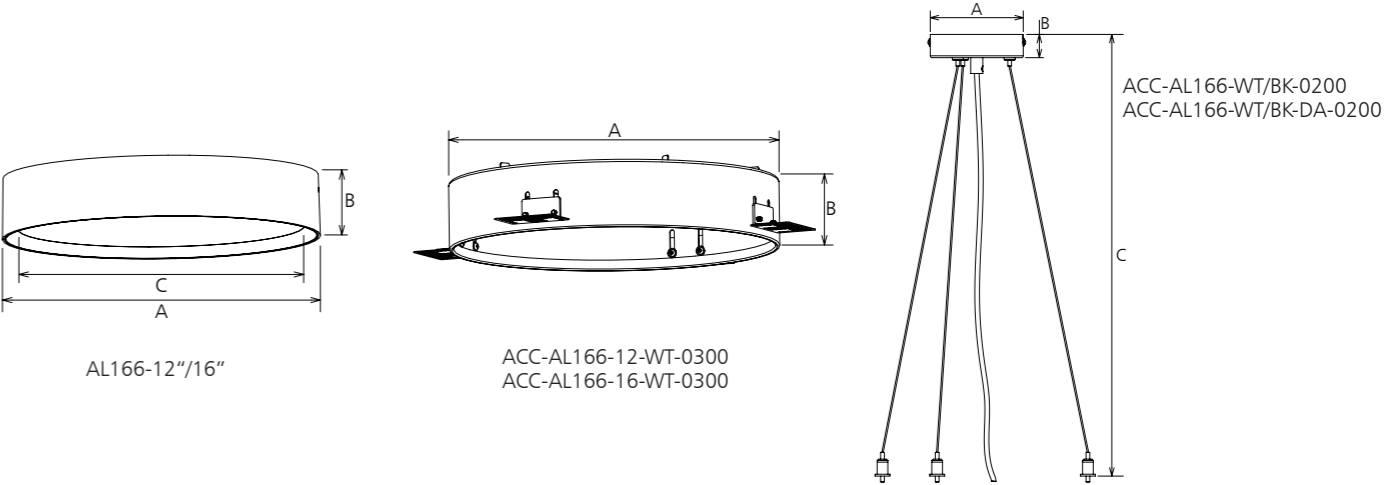
WW NW CW
Color changeable

Sensor

CRI ≥80

PF 0.9

50000 HOURS



Measurement

| Code | Dimension(mm) | | | Size(mm) | Product Weight (Kg) | | Package weight (Kg) | | Carton Size(cm) | Qty/CTN | 20GP (pcs) | 40HQ (pcs) |
|---|---------------|----|------|-----------|---------------------|--------|---------------------|---------|-----------------|---------|------------|------------|
| | A | B | C | | N.W/PC | G.W/PC | N.W/CTN | G.W/CTN | | | | |
| AL166-12-18W | Ø301 | 58 | Ø276 | Ø301*58 | 1.3 | 1.6 | 7.8 | 9.6 | 44*32.5*33.5 | 6 | 3060 | 7350 |
| AL166-12-24W | Ø301 | 58 | Ø276 | Ø301*58 | 1.3 | 1.6 | 7.8 | 9.6 | 44*32.5*33.5 | 6 | 3060 | 7350 |
| AL166-16-24W | Ø422 | 58 | Ø396 | Ø422*58 | 2.2 | 2.6 | 13.2 | 15.6 | 47*46*46 | 6 | 1800 | 3600 |
| AL166-16-30W | Ø422 | 58 | Ø396 | Ø422*58 | 2.2 | 2.6 | 13.2 | 15.6 | 47*46*46 | 6 | 1800 | 3600 |
| ACC-AL166-12-WT-0300 | Ø313 | 65 | - | Ø313*65 | 1 | 1.3 | 6 | 7.8 | 52.5*34*34 | 6 | 2556 | 5922 |
| ACC-AL166-16-WT-0300 | Ø434 | 65 | - | Ø434*65 | 1.4 | 1.8 | 8.4 | 10.8 | 50*45.5*46 | 6 | 1650 | 3450 |
| ACC-AL166-WT/BK-0200 ACC-AL166-WT/BK-DA-0200 | Ø100 | 25 | 1500 | Ø100*1500 | 0.27 | 0.31 | 16.2 | 19.37 | 46*34.5*35 | 60 | 27360 | 66360 |



Technical Data Sheet



| Code No. | | | AL166-12-18W | AL166-12-24W | AL166-16-24W | AL166-16-30W |
|---|-------|---------|--|--------------|--------------|--------------|
| Dimension(mm) | | | Ø301*58 | | Ø422*58 | |
| Cutout (mm) | | | Ø315*85 | | Ø435*85 | |
| Watt(W) | | | 18W | 24W | 24W | 30W |
| Rated Input Voltage(V) | | | AC220-240V | | | |
| Input Voltage(V) | | | AC198-264V | | | |
| LED Module Input | | | - | | | |
| Light Source | | | SMD | | | |
| SDCM | | | <6 | | | |
| CCT(K) | | | 1-CCT: 3000K/4000K/5000K/5700K 3-CCT: 3000K + 4000K + 5700K | | | |
| CCT Selection DIP Switch | | | Yes | | | |
| Luminous Flux (lm)±5% (Golden ring) | 1-CCT | Non-DIM | 1420-1650 | 1900-2050 | 2150-2420 | 2700-2950 |
| | | DIM | 1380-1600 | 1780-2000 | 2100-2350 | 2600-2840 |
| | 3-CCT | Non-DIM | 1420-1700 | 1900-2100 | 2150-2420 | 2700-3000 |
| | | DIM | 1380-1650 | 1780-2050 | 2100-2350 | 2600-2950 |
| Luminous Flux (lm) ±5% (Black ring) | 1-CCT | Non-DIM | 1350-1550 | 1800-1950 | 2050-2300 | 2600-2800 |
| | | DIM | 1300-1500 | 1700-1900 | 2000-2250 | 2500-2700 |
| | 3-CCT | Non-DIM | 1350-1600 | 1800-2000 | 2050-2300 | 2600-2850 |
| | | DIM | 1300-1550 | 1700-1950 | 2000-2250 | 2500-2800 |
| CRI | | | ≥80 | | | |
| Beam Angle (°) | | | 120° | | | |
| UGR | | | - | | | |
| LED Driver | | | Driver built-in | | | |
| Dimming Option | | | Triac/DALI | | | |
| Sensor | | | Microwave sensor+ Daylight sensor | | | |
| Emergency Kits | | | NO | | | |
| Electrical Class | | | Class II | | | |
| Ingress Protection (IP Rating) | | | IP44(Pendant installation IP20 only) | | | |
| Impact Resistance (IK Rating) | | | IK06 | | | |
| Product Finishing | | | Black RAL9005 & Golden PANTONE 7407U | | | |
| Materials of Optics | | | PC | | | |
| Materials of Housing | | | Aluminium(ADC12)+PC | | | |
| Lifetime (hr) | | | 50,000H | | | |
| Glow wire test (°C) | | | 650°C | | | |
| Operating Temp. (°C) | | | -20°C ~45°C | | | |
| Storage Temp. (°C) | | | -20°C ~60°C | | | |
| Installation | | | Surface mount & Pendant & Recessed | | | |



Technical Data Sheet



| Code No. | | | AL166-12-18W | AL166-12-24W | AL166-16-24W | AL166-16-30W |
|---|-------|---------|--|--------------|--------------|--------------|
| Dimension(mm) | | | Ø301*58 | | Ø422*58 | |
| Cutout (mm) | | | Ø315*85 | | Ø435*85 | |
| Watt(W) | | | 18W | 24W | 24W | 30W |
| Rated Input Voltage(V) | | | AC220-240V | | | |
| Input Voltage(V) | | | AC198-264V | | | |
| LED Module Input | | | - | | | |
| Light Source | | | SMD | | | |
| SDCM | | | <6 | | | |
| CCT(K) | | | 1-CCT: 3000K/4000K/5000K/5700K 3-CCT: 3000K + 4000K + 5700K | | | |
| CCT Selection DIP Switch | | | Yes | | | |
| Luminous Flux (lm) ± 5% (Golden ring) | 1-CCT | Non-DIM | 1450-1650 | 2030-2200 | 2300-2500 | 2850-3050 |
| | | DIM | 1420-1600 | 1980-2160 | 2250-2450 | 2750-2950 |
| | 3-CCT | Non-DIM | 1450-1700 | 2030-2300 | 2300-2550 | 2850-3150 |
| | | DIM | 1420-1650 | 1980-2250 | 2250-2500 | 2750-3050 |
| Luminous Flux (lm) ± 5% (White ring) | 1-CCT | Non-DIM | 1600-1750 | 2200-2400 | 2500-2700 | 3100-3300 |
| | | DIM | 1550-1700 | 2150-2350 | 2450-2650 | 3000-3200 |
| | 3-CCT | Non-DIM | 1600-1800 | 2200-2500 | 2500-2750 | 3100-3400 |
| | | DIM | 1550-1750 | 2150-2450 | 2450-2700 | 3000-3300 |
| CRI | | | ≥80 | | | |
| Beam Angle (°) | | | 120° | | | |
| UGR | | | - | | | |
| LED Driver | | | Driver built-in | | | |
| Dimming Option | | | Triac/DALI | | | |
| Sensor | | | Microwave sensor+Daylight sensor | | | |
| Emergency Kits | | | NO | | | |
| Electrical Class | | | Class II | | | |
| Ingress Protection (IP Rating) | | | IP44(Pendant installation IP20 only) | | | |
| Impact Resistance (IK Rating) | | | IK06 | | | |
| Product Finishing | | | White RAL9016 & Golden PANTONE 7407U | | | |
| Materials of Optics | | | PC | | | |
| Materials of Housing | | | Aluminium(ADC12)+PC | | | |
| Lifetime (hr) | | | 50,000H | | | |
| Glow wire test (°C) | | | 650°C | | | |
| Operating Temp. (°C) | | | -20°C ~45°C | | | |
| Storage Temp. (°C) | | | -20°C ~60°C | | | |
| Installation | | | Surface mount & Pendant & Recessed | | | |

Driver Datasheet(Non-dimmable)

| Total load wattage | | 18W | 24W | 30W |
|--------------------|-----------------------------|-----------------------------------|--------|---------------------------------|
| Output | Output Voltage range | DC60-75V | | |
| | Rated output current | 230mA | 300mA | 380mA |
| | Line Regulation | ±5% | | |
| | Setup, Rise Time | ≤0.5S | | |
| | Flickering Index | ≤3%(NO RISK) | | |
| | | | | |
| Input | Rated Input Voltage | AC220-240V | | |
| | Input Voltage | AC198-264V | | |
| | Frequency | 50/60Hz | | |
| | Rated Input Current | ≤0.09A | ≤0.12A | ≤0.16A |
| | Input Current | ≤0.10A | ≤0.14A | ≤0.17A |
| | Power Factor | 0.9 | | |
| | THD | - | | <20% @230V |
| | Efficiency | ≥88% | | ≥85% |
| | No load wattage | ≤0.5W | ≤0.5W | ≤0.5W |
| Protection | Short circuit protection | PASS | | |
| | Over voltage protection | PASS | | |
| | Over temperature protection | PASS | | |
| Safety &EMC | Withstand voltage | - | | |
| | Isolation Resistance | - | | |
| | Surge | IEC/EN61000-4-5(P<25W; L-N:500V) | | IEC/EN61000-4-5 (P≥25W L-N:1KV) |
| | EMC Emission | EN55015, EN61000-3-2 | | |
| | EMC Immunity | EN61000-4-2,3,4,5,6,8,11; EN61547 | | |

Driver Datasheet(Triac Dimmable)

| Total load wattage | | 18W | 24W | 30W |
|--------------------|-----------------------------|-----------------------------------|--------|---------------------------------|
| Output | Output Voltage range | DC60-75V | | |
| | Rated output current | 230mA | 300mA | 370mA |
| | Line Regulation | ±5% | | |
| | Setup, Rise Time | ≤0.5S | | |
| | Flickering Index | ≤3%(NO RISK) | | |
| | | | | |
| Input | Rated Input Voltage | AC220-240V | | |
| | Input Voltage | AC198-264V | | |
| | Frequency | 50Hz | | |
| | Rated Input Current | ≤0.09A | ≤0.14A | ≤0.17A |
| | Input Current | ≤0.10A | ≤0.15A | ≤0.19A |
| | Power Factor | 0.9 | | |
| | THD | <20% @230V | | |
| | Efficiency | ≥84% | | |
| | No load wattage | ≤0.5W | | |
| Protection | Short circuit protection | PASS | | |
| | Over voltage protection | PASS | | |
| | Over temperature protection | PASS | | |
| Safety &EMC | Withstand voltage | - | | |
| | Isolation Resistance | - | | |
| | Surge | IEC/EN61000-4-5(P<25W; L-N:500V) | | IEC/EN61000-4-5 (P≥25W L-N:1KV) |
| | EMC Emission | EN55015, EN61000-3-2 | | |
| | EMC Immunity | EN61000-4-2,3,4,5,6,8,11; EN61547 | | |

Driver Datasheet(Dali-dimmable)

| Total load wattage | | 18W | 24W | 30W |
|--------------------|-----------------------------|-----------------------------------|--------|---------------------------------|
| Output | Output Voltage range | 450mA | 600mA | 750mA |
| | Rated output current | DC 30-40V | | |
| | Line Regulation | ±5% | | |
| | Setup, Rise Time | <1S@230V | | |
| | Flickering Index | <1%(NO RISK) | | |
| | | | | |
| Input | Rated Input Voltage | AC220-240V | | |
| | Input Voltage | AC198-264V | | |
| | Frequency | 50 / 60 Hz | | |
| | Rated Input Current | ≤0.10A | ≤0.13A | ≤0.16A |
| | Input Current | ≤0.11A | ≤0.14A | ≤0.17A |
| | Power Factor | 0.9 | | |
| | THD | < 20 %@230V | | |
| | Efficiency | ≥85% | | |
| | No load wattage | <0.5W | | |
| Protection | Short circuit protection | PASS | | |
| | Over voltage protection | PASS | | |
| | Over temperature protection | PASS | | |
| Safety &EMC | Withstand voltage | I/P-O/P:3.75KVac,<5mA 60S | | |
| | Isolation Resistance | I/P-O/P: 500VDC, ≥4M Ω | | |
| | Surge | IEC/EN61000-4-5(P<25W; L-N:500V) | | IEC/EN61000-4-5 (P≥25w L-N:1KV) |
| | EMC Emission | EN55015, EN61000-3-2 | | |
| | EMC Immunity | EN61000-4-2,3,4,5,6,8,11; EN61547 | | |
| | | | | |

Driver Datasheet(Non-Dimmable for Sensor)

| Total load wattage | | 18W | 24W | 30W |
|--------------------|-----------------------------|-----------------------------------|--------|-------------|
| Output | Rated output current | 220mA | 305mA | 370mA |
| | Output Voltage range | DC60-75V | | |
| | Line Regulation | ±5% | | |
| | Setup Rise Time | <500ms @230V | | |
| | Flickering Index | <3%(LOW RISK) | | |
| | IEC-PST | ≤1 | | |
| | CIE(SVM) | ≤0.4 | | |
| | Rated Input Voltage | AC220-240V | | |
| | Input Voltage | AC198-264V | | |
| Input | Frequency | 50/60Hz | | |
| | Rated Input Current | ≤0.1A | ≤0.13A | ≤0.16A |
| | Input Current | ≤0.11A | ≤0.14A | ≤0.17A |
| | Power Factor | ≥0.9 | | |
| | THD | - | | <20% @230V |
| | Efficiency | ≥84% | ≥87% | ≥86% |
| | Inrush current | 29.4A/81us | | 31.2A/310us |
| | No load wattage | <0.5W@230V | | |
| | Stand-by power consumption | - | | |
| | Short circuit protection | PASS | | |
| | Over voltage protection | PASS | | |
| Protection | Over temperature protection | PASS | | |
| | | | | |
| | | | | |
| Safety & EMC | Withstand voltage | - | | |
| | Isolation Resistance | - | | |
| | Surge | IEC/EN61000-4-5 (L-N:1KV) | | |
| | EMC Emission | EN55015, EN61000-3-2 | | |
| | EMC Immunity | EN61000-4-2,3,4,5,6,8,11; EN61547 | | |

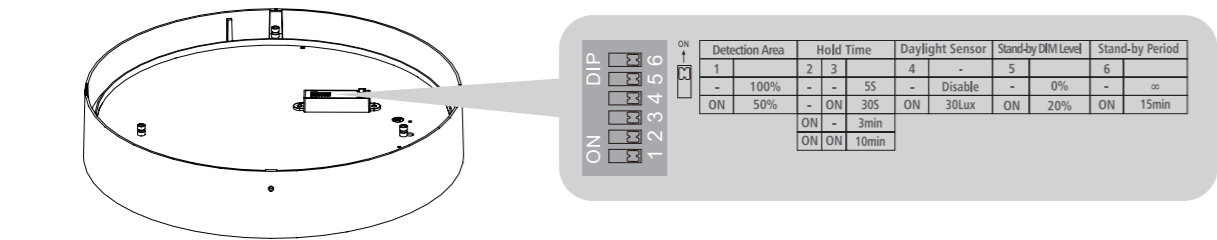
Sensor



Datasheet (Sensor)

| | |
|---------------------------|---|
| Operating voltage | DC7-12V |
| Microwave frequency | 5.8GHz±75MHz, ISM wave band |
| Detection angle | 140° |
| Detection Area | 4-6M (50%/100%) are adjustable by DIP switch 4-6M (25%/50%/75%/100%) ari adjustable by remote control |
| Hold time | 5S/60S/3min/10min aer adjustableby DIP switch Remote 5S/1min/5min/10min ari adjustable by remote control |
| Daylight threshold | DIP switch 30lux / disable are adjustable by DIP switch 15lux 🌙 /50lux 🌞 /disable ari adjustable by remote control |
| Stand-by DIM Level | 0% / 20% are adjustable by DIP switch 10%/30% ari adjustable by remote control |
| Stand-by Period | DIP switch 15min / ∞ are adjustable by DIP switch 0S/1min/10min/+ ∞ ari adjustable by remote control |
| Dimming Range | Pressing Dim+ /Dim- button continuously, the brightness will increase or decrease 5% for each adjustment. ON mode is still available. Dimming range: 30%-100% |
| Microwave ON/OFF function | Pressing ON/OFF button, the sensor function will be turned off,the lamp will remain ON/OFF and keep same brightness as last setting. The sensor mode can be restored and workable by pressing the 'Detection Area' button.(Other paramerers will be stayed the latest setting) |
| Installation Height | Recommended Installation Height: Ceiling mounted height 3m. |
| Minimum mounting distance | Recommended install height should be more than 3m |
| Operating temperature(°C) | -20°C~60°C |

Sensor Setting



Factory setting

| Detection Area | Hold Time | Daylight Sensor | Stand-by DIM Level | Stand-by Period |
|----------------|-----------|-----------------|--------------------|-----------------|
| 100% | 5S | Disable | 0% | ∞ |

| Detection Area | |
|----------------|------|
| 1 | |
| - | 100% |
| ON | 50% |

Sensor test condition: The test is based on 3m height, the detect distance radius is based on ground, the detect distance can be adjusted through the slide switch.

Sensor test environment and reference: The detective range is measured by human body whose stature is around 1.6-1.7M with medium size and traveling speed is around 1.0-1.5M per second. If the stature, bodily form and traveling speed are changed,then the detective range will be changed accordingly.

Sensor lamp's reaction under open/narrow environment: Test result will be highly influenced by test environment, the more open environment, the closer detect distance, the narrower environment, the longer detect distance. The detector may do self-excitation in a narrow environment.

Sensor Setting based on environmental disturbance: Some environmental disturbances will cause abnormal induction, such as the lamp can not automatically turn off for a long time or the sensor function is invalid, then users can adjust sensor distance to reach the ideal effect. It is recommended to adjust the sensing distance to 50% for the environment where near the heavy equipment, metal sheets and metal pipes, concrete wall (<30cm thickness) etc. Recommend to keep 100% sensor distance in open environment. For environment where near the routers, telecommunications base stations, electrical machinery etc, it is recommended to keep the installation distance of more than 5 meters and adjust to 50% sensor distance.

| Hold Time | | |
|-----------|----|-------|
| 2 | 3 | |
| - | - | 5S |
| - | ON | 60S |
| ON | - | 3min |
| ON | ON | 10min |

Refers to the time period the lamp remains at 100% illumination after no motion detected.

Notice 1: The hold time can be selected by the slide switch.

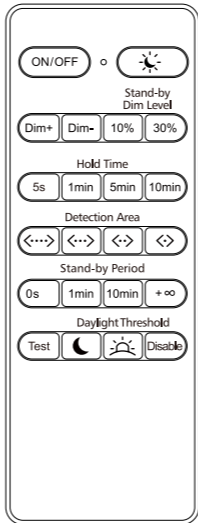
The hold time counting should be started after the sensor is powered on and initialized.

| Daylight Sensor | |
|-----------------|---------|
| 4 | |
| - | disable |
| ON | 30lux |

| Stand-by Dim Level | |
|--------------------|-----|
| 5 | |
| - | 0% |
| ON | 20% |

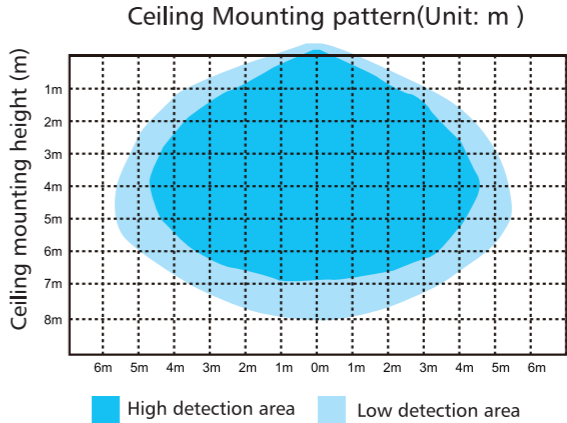
| Stand-by Period | |
|-----------------|-------|
| 6 | |
| - | ∞ |
| ON | 15min |

Sensor Setting



| Button | Function | Description |
|--------------------|-----------------------|--|
| ON/OFF | Normal ON/OFF | 1) Pressing ON/OFF button, the sensor function will be turned off, the lamp will remain ON/OFF and keep same brightness as last setting. 2)The sensor mode can be restored and workable by pressing the 'Detection Area' button.(Other paramerers will be stayed the latest setting) |
| 🌙 | Night light function | 1) Short press 🌙, the lamp will keep 10% brightness as a night lamp. Long press 3 seconds to reset sensor mode, the lamp will restore to 100% brightness, all parameters will keep same as DIP setting. 2) In night lamp mode, press Dim+ / Dim-can restore to last setting status and do relevant dim+ / dim-adjustment. 3) The sensor mode can be restored and workable by pressing the 'Detection Area' button.(Other paramerers will be stayed the latest setting) |
| Dim+ | Increasing Brightness | Pressing 'Dim+' button continuously, the brightness will increase 5% for each adjustment. ON mode is still available. Dimming range: 30%-100% |
| Dim- | Reducing Brightness | Pressing 'Dim-' button continuously, the brightness will increase 5% for each adjustment. ON mode is still available. Dimming range: 30%-100% |
| Stand-by Dim Level | Low Brightness | 10%, 30% |
| Hold Time | 100% Brightness | 5S, 1min, 5min, 10min |
| Detection Area | Detection Area | 100% <--->, 75% <--->, 50% <-->, 25% <-> |
| Stand-by Period | Stand-by Time | 0S, 1min, 10min, + ∞ |
| Test | TEST Button | Pressing this button, the light will turn off after 2 seconds.Restore to last sensing setting after power off. |
| Daylight Threshold | Threshold | 15Lux 🌙,50Lux 🌞, Disable |

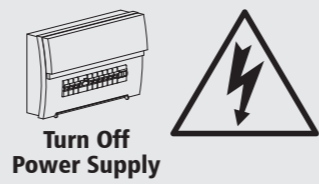
Induction Range



■ Installation Procedure

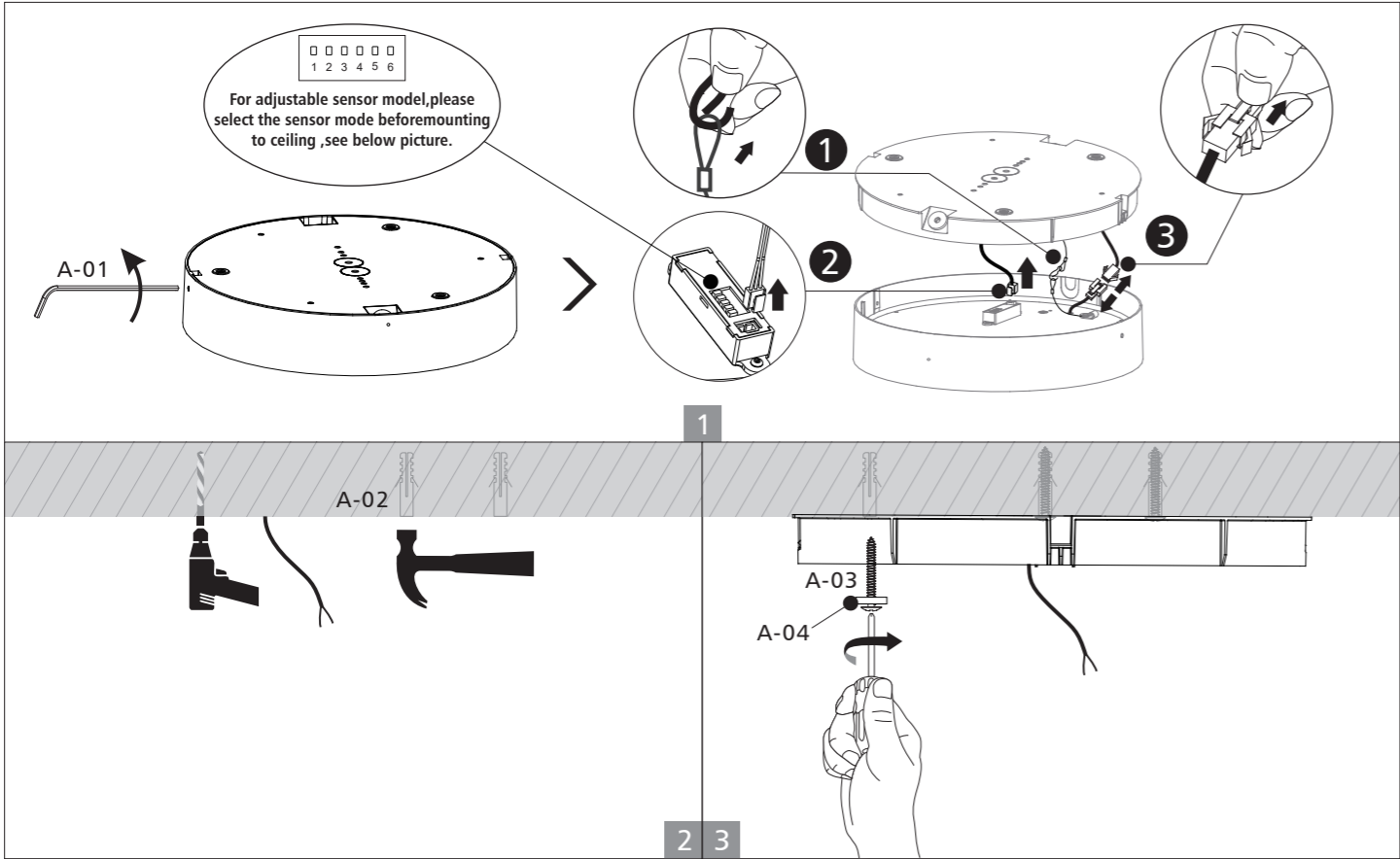
WARNING ⚡

- 1.Switch off before installation.
- 2.Switch on only after complete installation and examination of the circuit.
- 3.Professional electrician for installation and maintenance only.



■ Surface mount installation

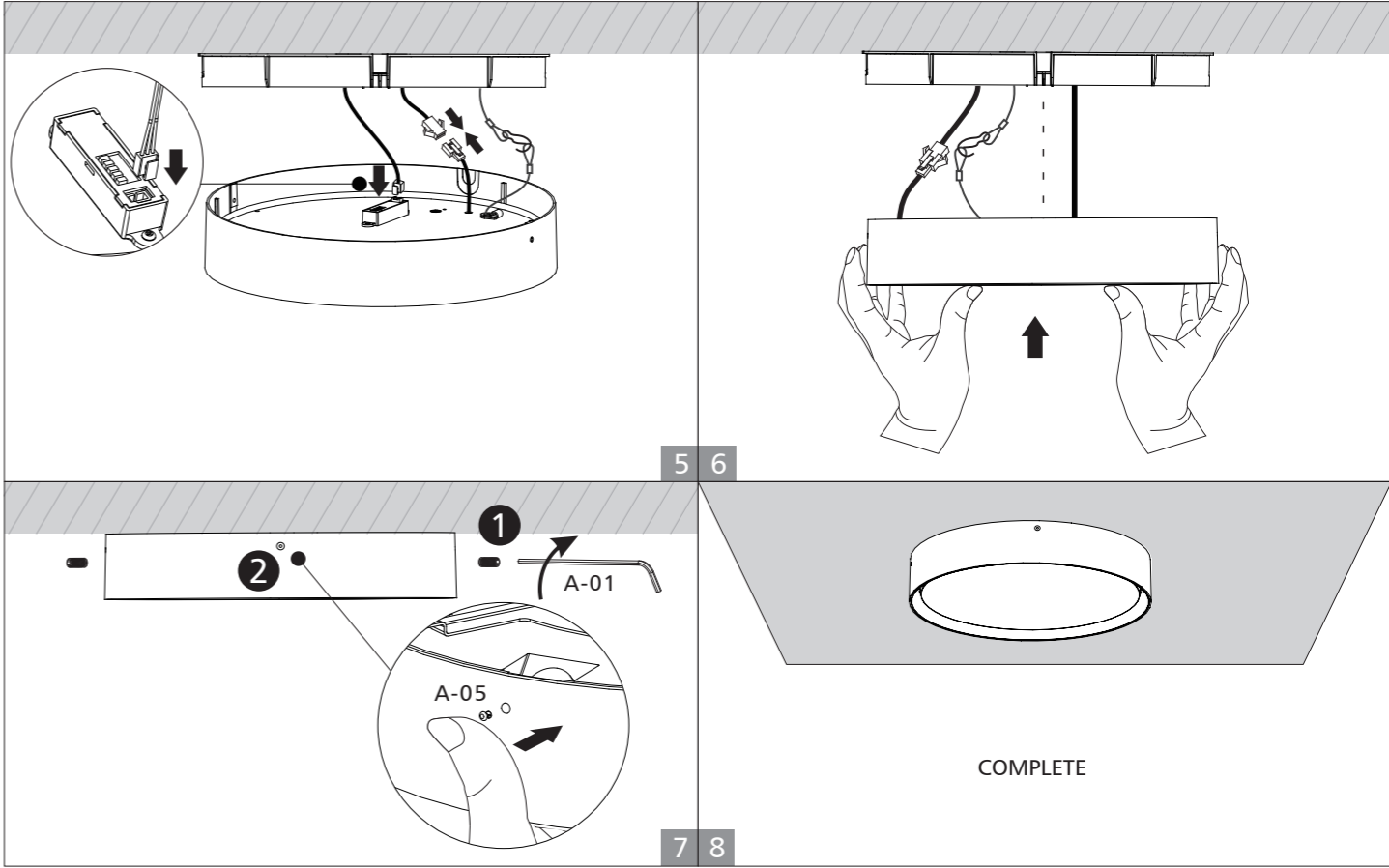
| Code | A-01 | A-02 | A-03 | A-04 | A-05 | A-06 |
|--------|------|------|------|------|------|------|
| 12inch | x1 | x3 | x3 | x3 | | x2 |
| 16inch | x1 | x3 | x3 | x3 | x2 | x2 |



select preferred colour temperature for product in CCT change function only

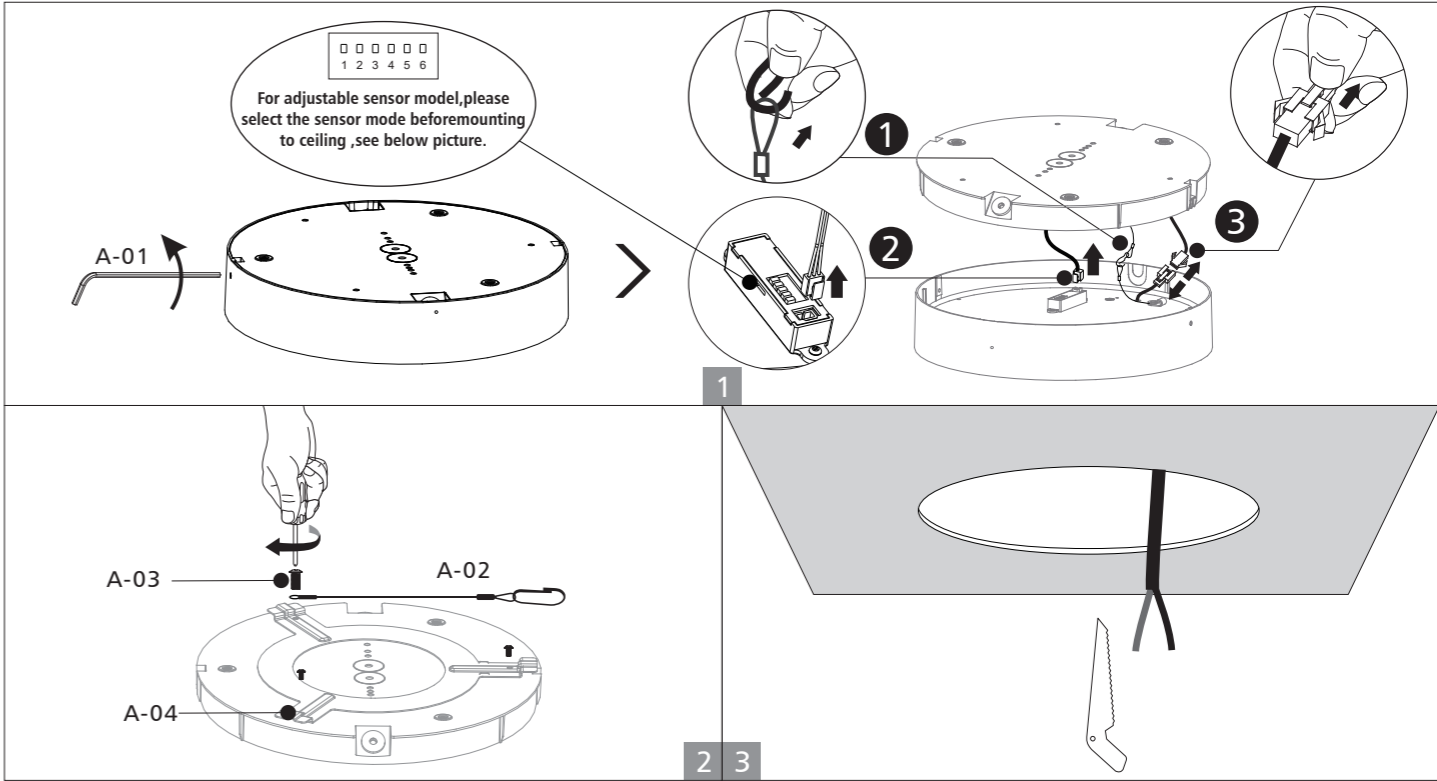
| Standard | DALI |
|---------------------------------|---|
| <p>N=Neutral L=Switched</p> | <p>L=Switched N=Neutral DA/V+ = DIM+ DA/V- = DIM-</p> |

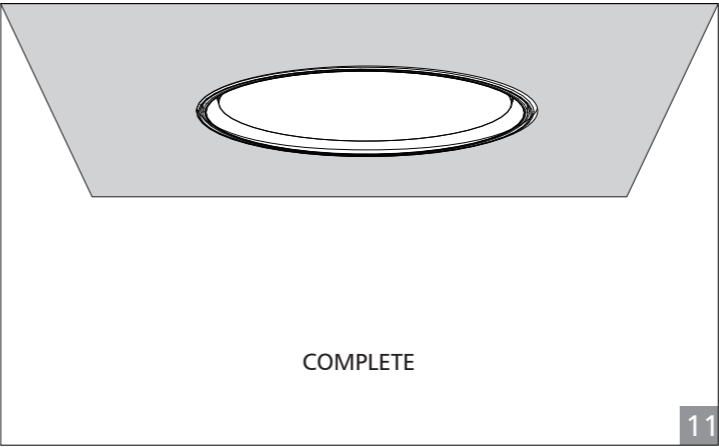
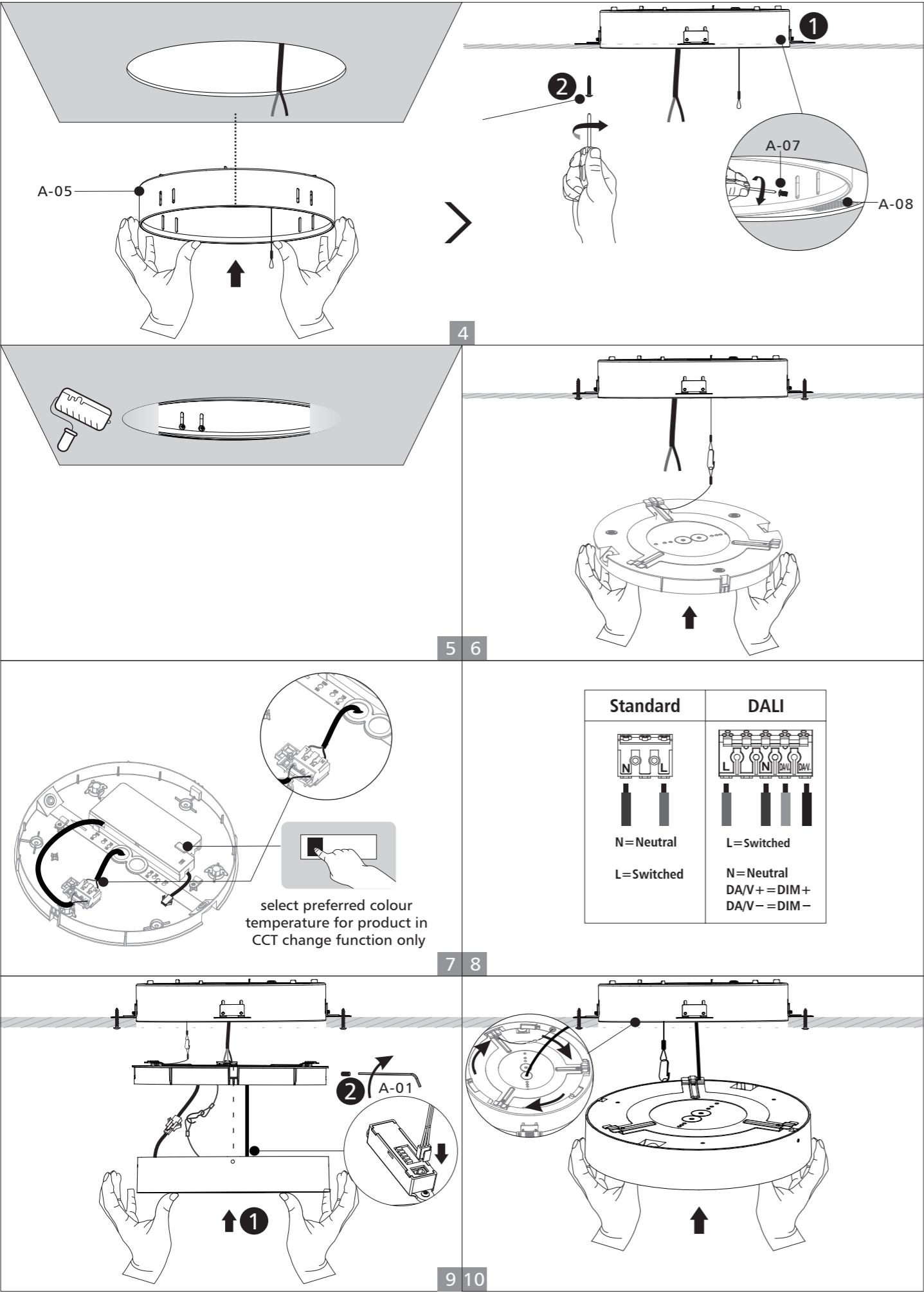
Wire diameter: 0.5-2.5mm²
Wire stripping length: 8-10mm



■ Recessed installation

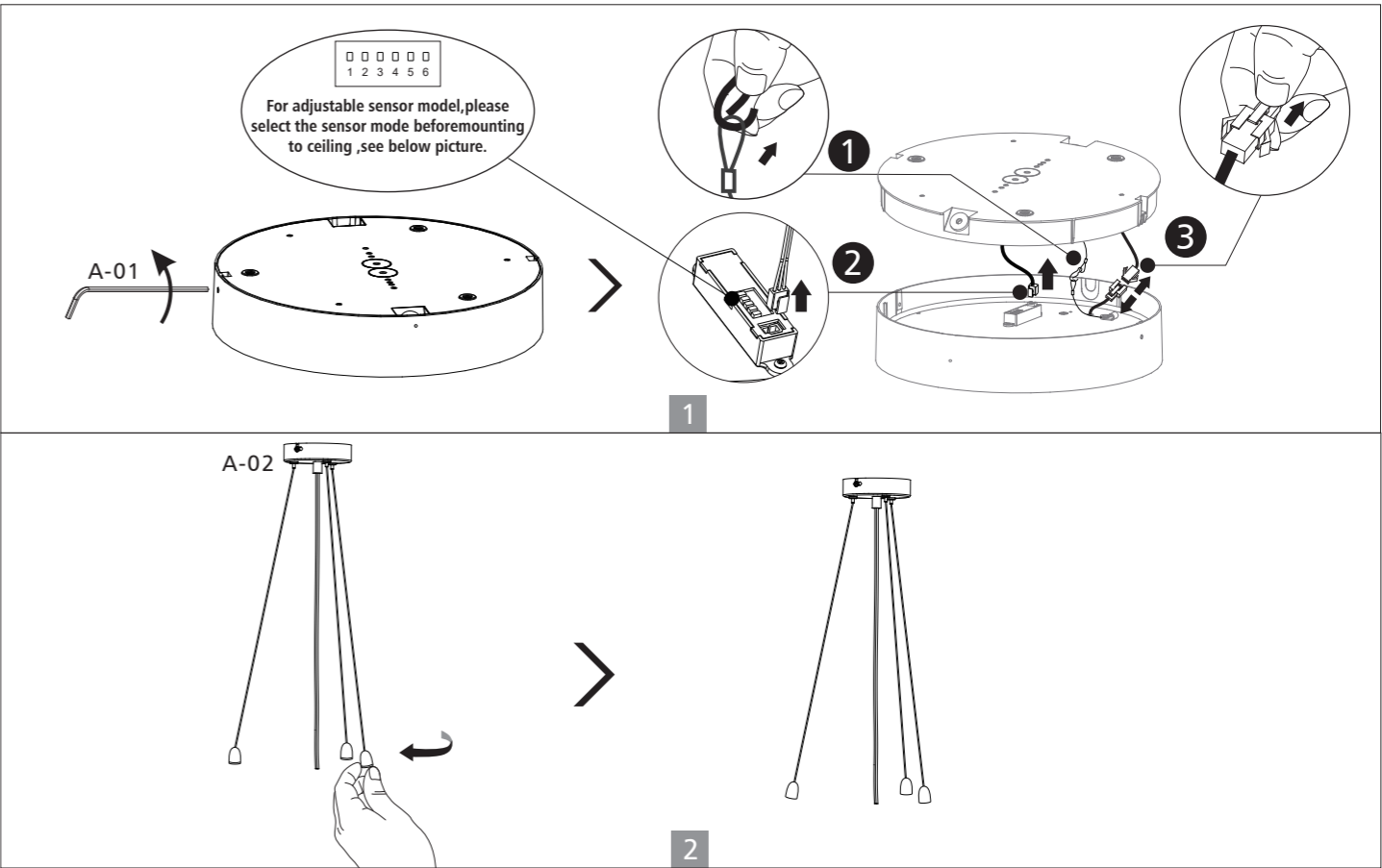
| Code | A-01 | A-02 | A-03 | A-04 | A-05 | A-06 | A-07 | A-08 |
|--------|------|------|------|------|------|------|------|------|
| 12inch | x1 | x1 | x3 | x1 | x1 | x8 | x8 | x4 |
| 16inch | x1 | x1 | x3 | x1 | x1 | x10 | x10 | x5 |

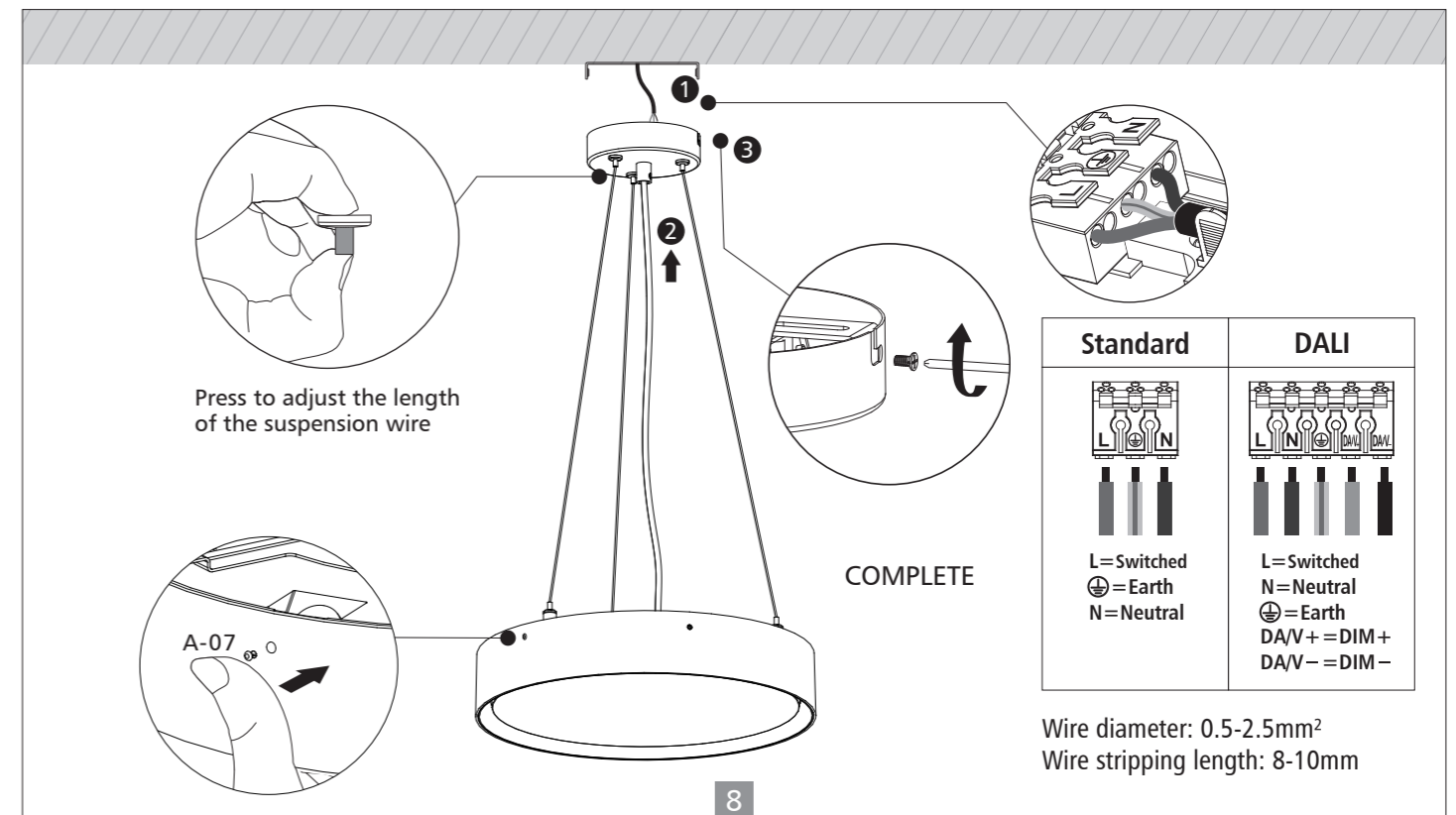
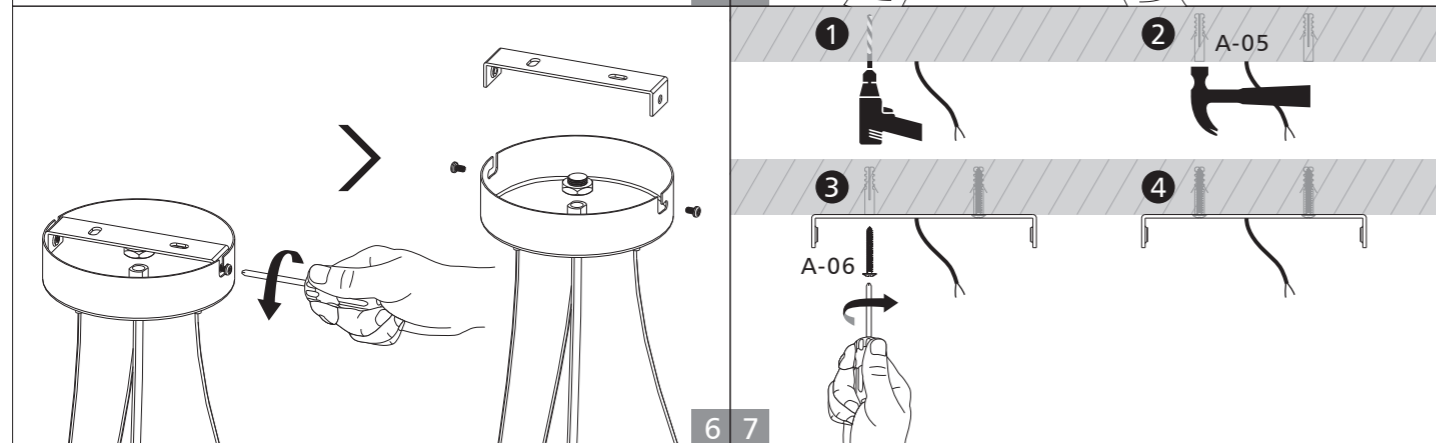
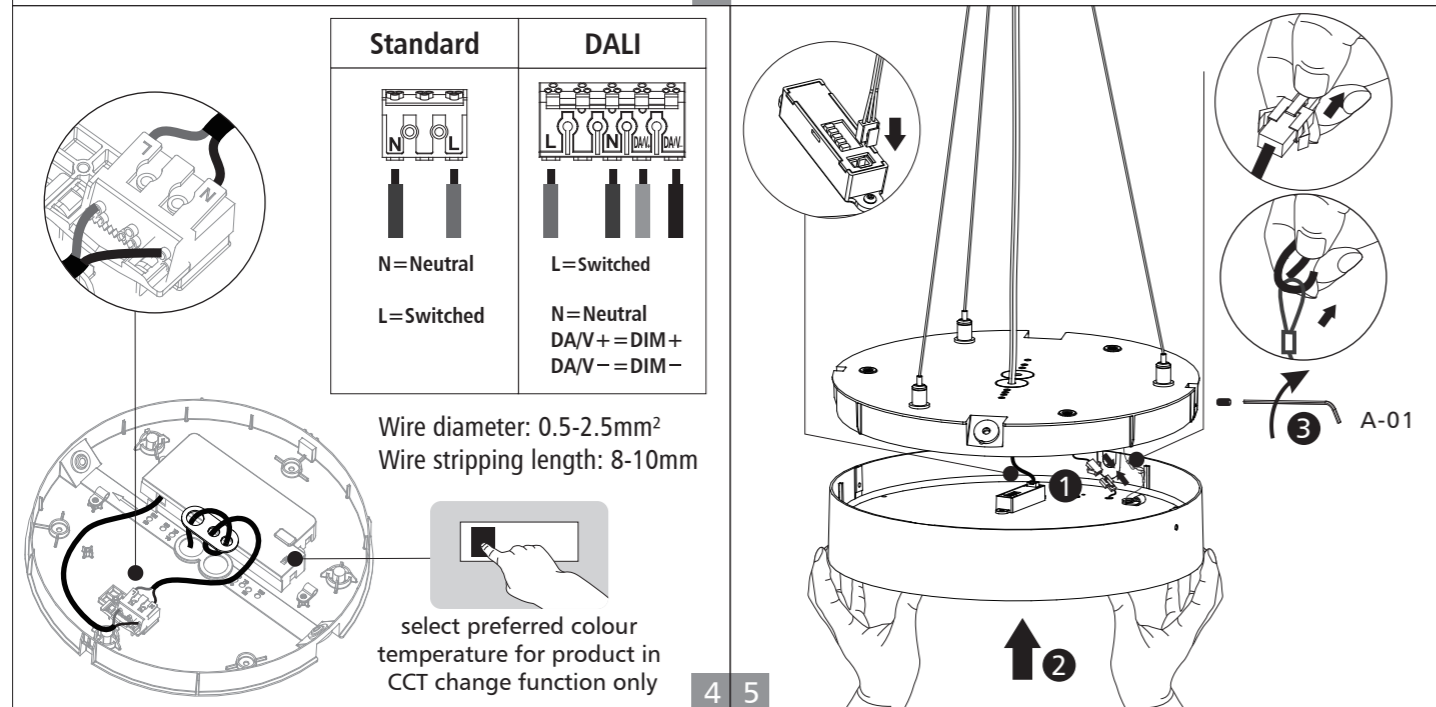
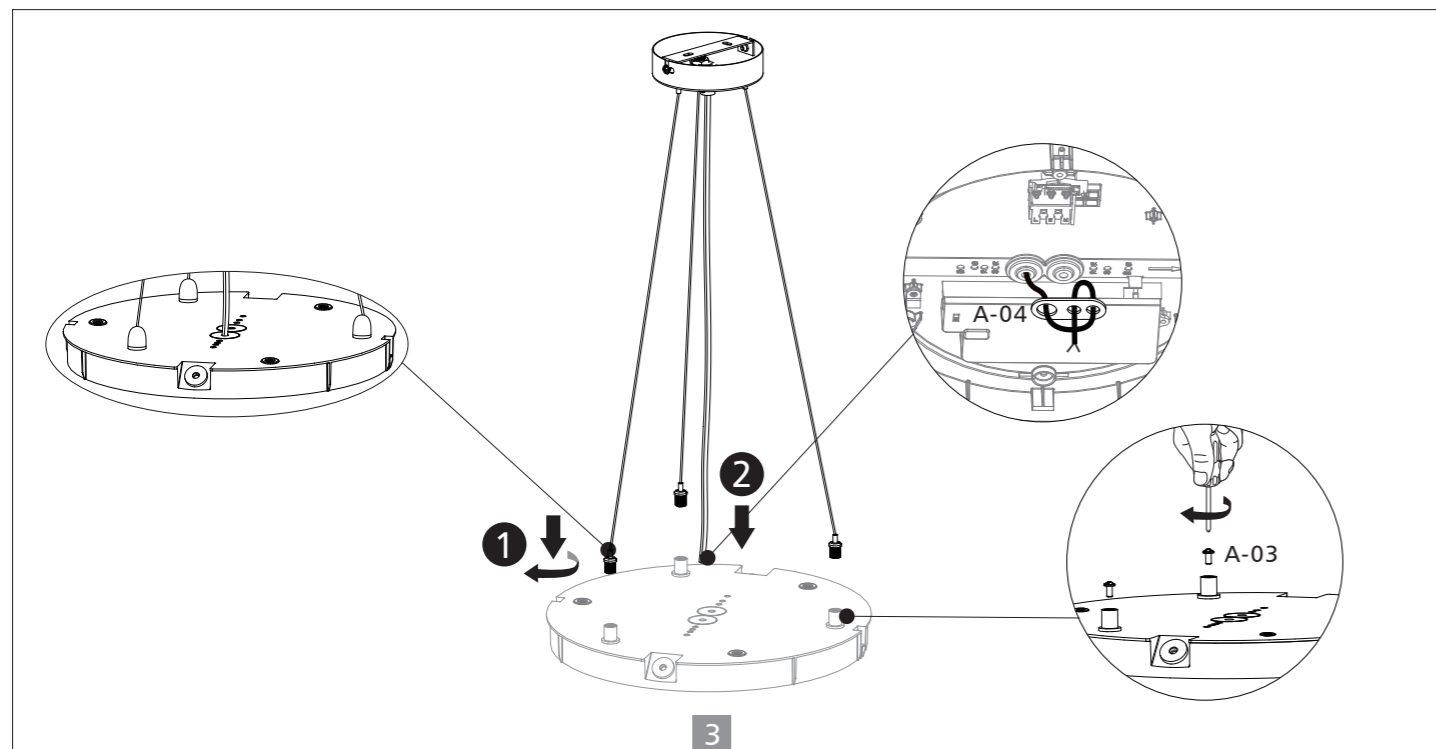




pendant installation (With round ceiling plate)

| Code | A-01 | A-02 | A-03 | A-04 | A-05 | A-06 | A-07 |
|--------|------|------|------|------|------|------|------|
| 12inch | x1 | x1 | x3 | x1 | x2 | x2 | |
| 16inch | x1 | x1 | x3 | x1 | x2 | x2 | x2 |







Up to Shine, there is life 光之上，是生活

▼ www.upshine.com info@upshine.com TEL: +86 755 2919 7332 ▼

Add: 2nd building Dingfeng High-Tech Zone, Fuyuan 1st road, FuYong Sub-district, Bao'an, Shenzhen China