

ARCHITECTURAL LIGHTING



LED Ceiling Light
AL99C-UGR Series



Black RAL 9005



White RAL 9016



Wood grain



AL99C

IP40

The AL99C-UGR ceiling light is a large-sized series with a large luminous surface. Its unique and bold exterior design enhances the decorative and artistic aspects of a space, while the high-quality texture showcases the fixture's premium quality and special allure. The design with a large luminous surface and anti-glare UGR<19 design illuminates the space while providing users with a very soft and comfortable lighting experience. Its unique design allows it to be used in various installation scenarios. With the option for 100% downward light or up and down light, and the choice of ceiling-mounted, recessed, or suspended installation, it offers both flexibility and consistency in the entire series in terms of aesthetics.

LED Ceiling Light



FEATURES

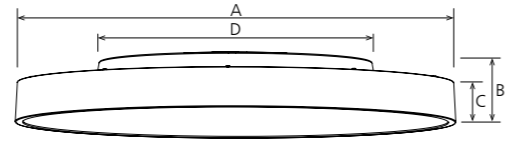
- Anti-glare UGR < 19
- Interchangeable CCT (3000K+4000K) by slide switch.
- DALI dimming.
- Lighting design options: 100% direct lighting, up and down lighting (not suitable for recessed installation).
- IK06 rating.
- Multiple functions: adjustable sensor, emergency.
- Various installation options: recessed/surface mount/pendant (with pole suspension, wire suspension, cable suspension).

APPLICATIONS

It is designed for general lighting applications in office, supermarket, shop, school, hotel, etc.



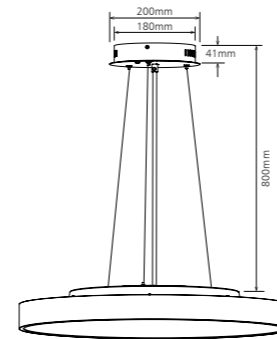
PRODUCT DIMENSION



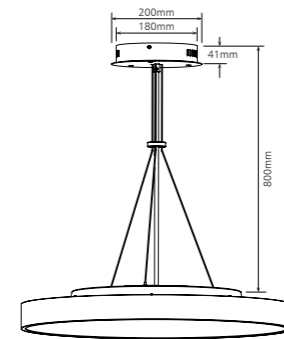
Code	Dimension(mm)			
	A	B	C	D
ART-AL99C-16-20W	400	86	55	219
ART-AL99C-24-40W	600	86	55	383
ART-AL99C-32-75W	800	86	55	383
ART-AL99C-40-100W	1000	86	55	383



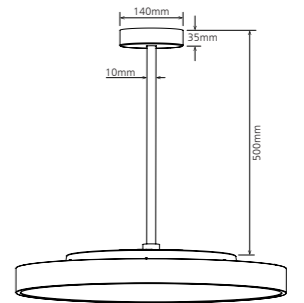
PENDANT ACCESSORY



ACC-AL99C-16-WT/BK/WD-50
ACC-AL99C-24/32/40-WT/BK/WD-50



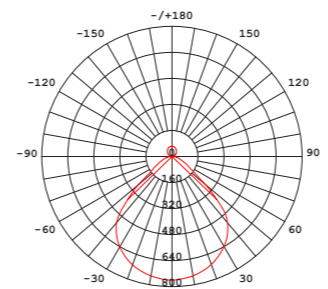
ACC-AL99C-WT/BK/WD-52



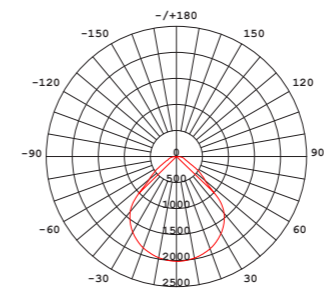
ACC-AL99C-16/24-WT/BK/WD-51

Code	Size(mm)	Product Weight (Kg)		Package weight (Kg)		Carton Size(cm)	Qty/CTN	20GP (pcs)	40HQ (pcs)
		N.W/PC	G.W/PC	N.W/CTN	G.W/CTN				
ACC-AL99C-16-WT/BK/WD-50 ACC-AL99C-24/32/40-WT/BK/WD-50	Ø200*41	0.86	0.9	5.16	6.4	26.5*23*23	4PCS	8520	18876
ACC-AL99C-WT/BK/WD-52	Ø200*41	0.86	0.9	5.16	6.4	26.5*23*23	4PCS	8520	18876
ACC-AL99C-16/24-WT/BK/WD-51	Ø140*35	0.78	0.9	4.68	6.4	55.5*41.5*44.5	18PCS	5040	11970

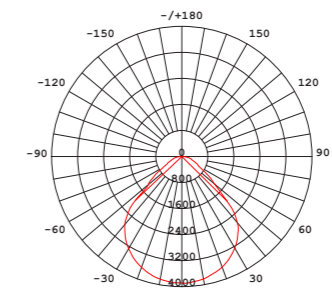
OPTICS



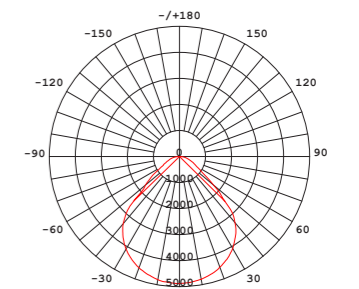
AVERAGE BEAM ANGLE(50%): 89.9 DEG
UNIT: cd
AL99C-16-20W-4000K



AVERAGE BEAM ANGLE(50%): 90.1 DEG
UNIT: cd
AL99C-24-40W-4000K



AVERAGE BEAM ANGLE(50%): 89.3 DEG
UNIT: cd
ART-AL99C-32-75W-4000K



AVERAGE BEAM ANGLE(50%): 92.3 DEG
UNIT: cd
AL99C-40-100W-4000K

BASIC INFORMATION

Housing Material	Aluminium
Product Finishing	White RAL9016/ Black RAL9005/ Wood grain
Optic Material	PMMA; PET+PC
Light Source	SMD
SDCM	<6(@3000K 4000K)
CRI	≥80
Lifetime(hr)	50,000h
LED Driver	Built-in; Flicker Free
Installation	Surface mount/ Pendant/ Recessed
Electrical Class	Class I
Operating Temp.(°C)	-20°C~40°C
Storage Temp.(°C)	-20°C~65°C
Glow Wire Test (°C)	-

FEATURES & BENEFITS

General Efficacy	100lm/W
CCT Selection DIP Switch	1-CCT: 3000K / 4000K 2-CCT: 3000K + 4000K
Watt Selection DIP Switch	-
Dimming Option	DALI
Functions	Sensor, Emergency
UGR	<19
Ingress Protection (IP Rating)	IP40
Impact Resistance (IK Rating)	IK06
Certification	CE / SAA / RoHS

TECHNICAL DATA SHEET

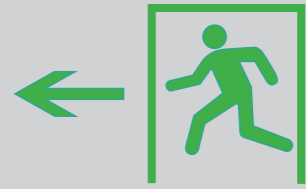
CODE	ART-AL99C-16-20W	ART-AL99C-24-40W	ART-AL99C-32-75W	ART-AL99C-40-100W		
Dimension(mm)	Ø400*86	Ø600*86	Ø800*86	Ø1000*86		
Cutout(mm)	Ø220~250	Ø385~415				
Watt(W)	20W	40W	75W	100W		
Input Voltage	AC198-264V					
LED Module Input	-					
Light Source	SMD					
CCT(K)	1-CCT: 3000K/4000K 2-CCT: 3000K + 4000K					
CCT Selection DIP Switch	YES					
Luminous Flux (lm) ±5% (White or Wood grain finish)CRI80	1-CCT	Non-DIM	1420-1780	3800-4580	6540-7860	9270-10660
		DALI	1350-1680	3690-4280	6500-7640	9080-10520
	2-CCT	Non-DIM	1400-1750	3750-4500	6540-7860	9270-10660
		DALI	1300-1680	3680-4250	6500-7640	9080-10520
Luminous Flux (lm) ±5% (Black finish) CRI80	1-CCT	Non-DIM	1280-1600	3420-4100	6260-7270	8880-10150
		DALI	1200-1500	3320-3850	6210-7210	8740-10070
	2-CCT	Non-DIM	1260-1570	3375-4050	6260-7270	8880-10150
		DALI	1170-1500	3310-3820	6210-7210	8740-10070
Beam Angle (°)	90°					
UGR	<19					
Dimming Option	DALI					
Sensor	Microwave sensor & Daylight sensor					
Emergency	YES					
Product weight(Kg)	N.W/PC	2.61	5.96	7.17	10.83	
	G.W/PC	3.07	6.79	-	-	
Package weight(Kg)	N.W/CTN	15.66	11.92	-	-	
	G.W/CTN	19.84	14.74	9.85	13.82	
Qty/CTN (PCS)	6	2	1	1		
Carton Size(cm)	64.5*46.5*47.5	68.5*23.5*68.5	85.5*14*89	111.5*14*112		
20GP(pcs)	1008	486	256	164		
40HQ(pcs)	2580	996	584	392		

DRIVER DATASHEET(NON-DIMMABLE)

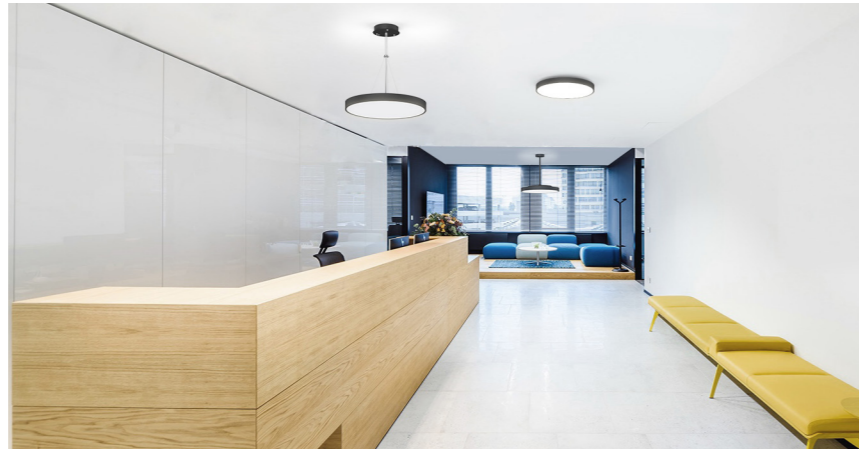
	Total load wattage	20W	40W	75W	100W	
Output	Rated output current	500mA	250mA	480 mA	650mA	
	Output Voltage range	28-42V	80-200V	110-160V	50-153V	
	Line Regulation	±5%				
	Setup Rise Time	<0.5s @230V				
	Flickering Index	<3%(NO RISK)			0.3%(NO RISK)	
	IEC-PST	≤1				
	CIE (SVM)	≤0.4				
Input	Rated Input Voltage	220-240VAC				
	Input Voltage	198-264VAC				
	Frequency	50/60Hz				
	Rated Input Current	0.23A	≤0.21A	0.47A	≤0.57A	
	Input Current	0.21A	≤0.23A	0.37A	≤0.51A	
	Power Factor	0.9				
	THD	<20% @230V				
	Efficiency	87%	≥89%	90%	≥92%	
	Inrush current	15.2A/560uS	≤45A&200uS			
	No load wattage	<0.5W @230V				
	Stand-by power consumption	-				
	Protection	Short circuit protection	PASS			
		Over voltage protection	PASS			
Over temperature protection		PASS				
Safety & EMC	Withstand voltage	I/P-FG:1.5KVac, <5mA 60S				
	Isolation Resistance	500VDC, ≥2M Ω				
	Surge	IEC/EN61000-4-5 (L-N:1KV, L/N-PE:2KV)				
	EMC Emission	EN55015, EN61000-3-2				
	EMC Immunity	EN61000-4-2,3,4,5,6,8,11; EN61547				

DRIVER DATASHEET(DALI DIMMABLE)

	Total load wattage	20W	40W	75W	100W	
Output	Rated output current	550mA	250mA	500mA	650mA	
	Output Voltage range	9-42V	54-240V			
	Line Regulation	±5%				
	Setup Rise Time	<1S @230V				
	Flickering Index	<3%(NO RISK)				
	IEC-PST	≤1				
	CIE (SVM)	≤0.4				
Input	Rated Input Voltage	220-240VAC				
	Input Voltage	198-264VAC				
	Frequency	50/60Hz				
	Rated Input Current	≤0.11A	≤0.24A	≤0.38A	≤0.51A	
	Input Current	≤0.12A	≤0.23A	≤0.43A	≤0.56A	
	Power Factor	0.9				
	THD	<20% @230V				
	Efficiency	≥85%	≥92%			
	Inrush current	≤20A&120uS	≤37A&300uS	≤60A&200uS		
	No load wattage	<0.5W @230V				
	Stand-by power consumption	<0.5W @230V				
	Protection	Short circuit protection	PASS			
		Over voltage protection	PASS			
Over temperature protection		PASS				
Safety & EMC	Withstand voltage	I/P-FG:1.5KVac, <5mA 60S				
	Isolation Resistance	500VDC, ≥2M Ω				
	Surge	IEC/EN61000-4-5 (L-N:1KV, L/N-PE:2KV)				
	EMC Emission	EN55015, EN61000-3-2				
	EMC Immunity	EN61000-4-2,3,4,5,6,8,11; EN61547				



Emergency



Driver Datasheet (Emergency)

Input power	3W(16")	5W(24"/32"/40")
Discharge power	2W	5W
Rated Input Voltage(V)	AC230V	
Frequency	50/60Hz	
Input Voltage	AC200-240V	
Rated Input Current	≤0.03A	≤0.04A
Battery	6.4V 1500mAh (LifepO4)	6.4V 4000mAh (LifepO4)
Lifetime	Over 2000 cycles	
Battery duration	≥3hrs	
Charge Period	≤24hrs	
Emergency switching time	≤1S	
Emergency Operating Temp. (°C)	0°C-25°C	

Instructions for automatic test option

- Once the unit is powered up it will automatically initiate a self test and diagnostics as follows:
 - Every 4 seconds:Checks for battery disconnection,charger board fault,lamp failure and transformer failure.
 - Every month:Performs a 3 minutes duration test.
 - Every yeat:Performs a 1 Hour or 3 Hours duration test.
 All test functions are factory preset and do not need field adjustment.

2.Dual Colour Indicator LED Status Mesnings

- Green Solid On Ready/Normal Operation
- Red Requires Services

•	One flash, 4 seconds pause	Battery not connected
••	Two flashes, 4 seconds pause	Battery short or low battery voltage
•••	Three flashes, 4 seconds pause	Charger board fault
••••	Four flashes, 4 seconds pause	Transformer fault
•••••	Five flashes, 4 seconds pause	LED lamp fault

NOTE: After repairing a service fault,press and hold the test button for 2 seconds to reset the flashing indicator light to green.

3.Manual Testing

Press test button once	30 seconds duration test
Press test button twice within 2 seconds	3 minutes duration test
Press test button 3 times within 2 seconds	30 minutes duration test
Press test button 4 times within 2 seconds	1 or 3 hours duration test

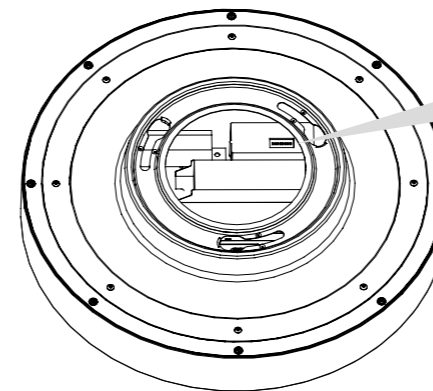
Sensor



Datasheet (Sensor)

Operating voltage	220-240VAC 50/60Hz
Power consumption	1.5W±0.5W
Microwave frequency	5.8GHz±75MHz, ISM wave band
Transmission power	<0.5mW
Detection angle	140°
Detection Area	4-6M 100%/75%/50%/25% are adjustable by DIP switch
Hold time	5S/30S/90S/5Min/20Min/30Min are adjustable by DIP switch
Daylight sensor	2lux/10lux/30lux/50lux/Disable are adjustable by DIP switch
Stand-by DIM Level	-
Stand-by Period	-
Dimming Range	-
Microwave ON/OFF function	-
Installation Height	Recommended Installation Height: Wall mounted height 1.8m. Ceiling mounted height 3m.
Minimum mounting distance	recommended mounting distance should be more than 3m
Operating temperature(°C)	-20°C~60°C

Sensor Setting



Daylight Sensor			Hold Time			Detection Area	
1	2	3	4	5	6	7	8
ON	ON	ON	2Lux	ON	ON	5S	ON
ON	ON	-	10Lux	-	ON	30S	-
-	ON	-	30Lux	ON	-	90S	ON
ON	-	-	50Lux	-	ON	5min	-
-	-	-	Disable	ON	-	20min	-
-	-	-	-	-	-	30min	-

ON							
1	2	3	4	5	6	7	8
ON	ON	ON	ON	ON	ON	ON	ON

Daylight Sensor	Hold Time	Detection Area
Disable	5S	100%

Daylight Sensor			
	1	2	3
I	ON	ON	ON
II	ON	ON	-
III	-	ON	-
IV	ON	-	-
V	-	-	-

Hold Time			
	4	5	6
I	ON	ON	ON
II	-	ON	ON
III	ON	-	ON
IV	-	-	ON
V	ON	ON	-
VI	-	-	-

Detection Area		
	7	8
I	ON	ON
II	-	ON
III	ON	-
IV	-	-

Daylight Sensor:

Notice 1: The light threshold can be selected through the slide switch, it may cause a large deviation in different lamps.

Hold Time:

Notice 1: The hold time can be selected by the slide switch. The hold time counting should be started after the sensor is powered on and initialized.

Detection Area:

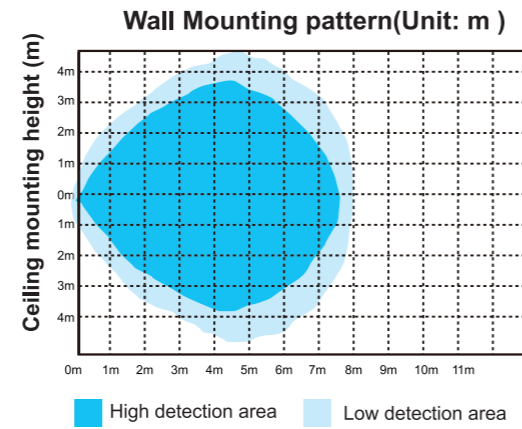
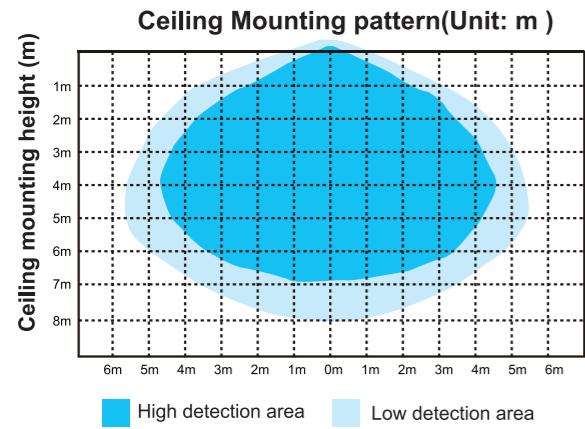
Sensor test condition: The test is based on 3m height, the detect distance radius is based on ground, the detect distance can be adjusted through the slide switch.

Sensor test environment and reference: The detective range is measured by human body whose stature is around 1.6-1.7M with medium size and traveling speed is around 1.0-1.5M per second. If the stature, bodily form and traveling speed are changed,then the detective range will be changed accordingly.

Sensor lamp's reaction under open/narrow environment: Test result will be highly influenced by test environment, the more open environment, the closer detect distance; the narrower environment, the longer detect distance. The detector may do self-excitation in a narrow environment.

Sensor Setting based on environmental disturbance: Some environmental disturbances will cause abnormal induction, such as the lamp can not automatically turn off for a long time or the sensor function is invalid, then users can adjust sensor distance to reach the ideal effect. It is recommended to adjust the sensing distance to 50% for the environment where near the heavy equipment, metal sheets and metal pipes, concretewall(<30cm thickness)etc.Recommend to keep 100%sensor distance in open environment. For environment where near the routers, telecommunications base stations, electrical machinery etc, it is recommended to keep the installation distance of more than 5 meters and adjust to 50% sensor distance.

Induction Range



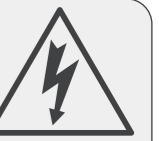
Function Table

Function Table	AL99C-16-20W	AL99C-24-40W	AL99C-32-75W	AL99C-40-100W
Non-dim	√	√	√	√
Non-dim + CCT Switchable	√	√	√	√
Emergency	√	√	√	√
Emergency + Non-Dim + CCT Switchable	√	√	√	√
Sensor	√	√	√	√
Sensor + CCT Switchable	√	√	√	√
Sensor + Emergency	√	√	√	√
Sensor + Emergency + CCT Switchable	√	√	√	√
DALI Dim	√	√	√	√
DALI + CCT Switchable	√	√	√	√

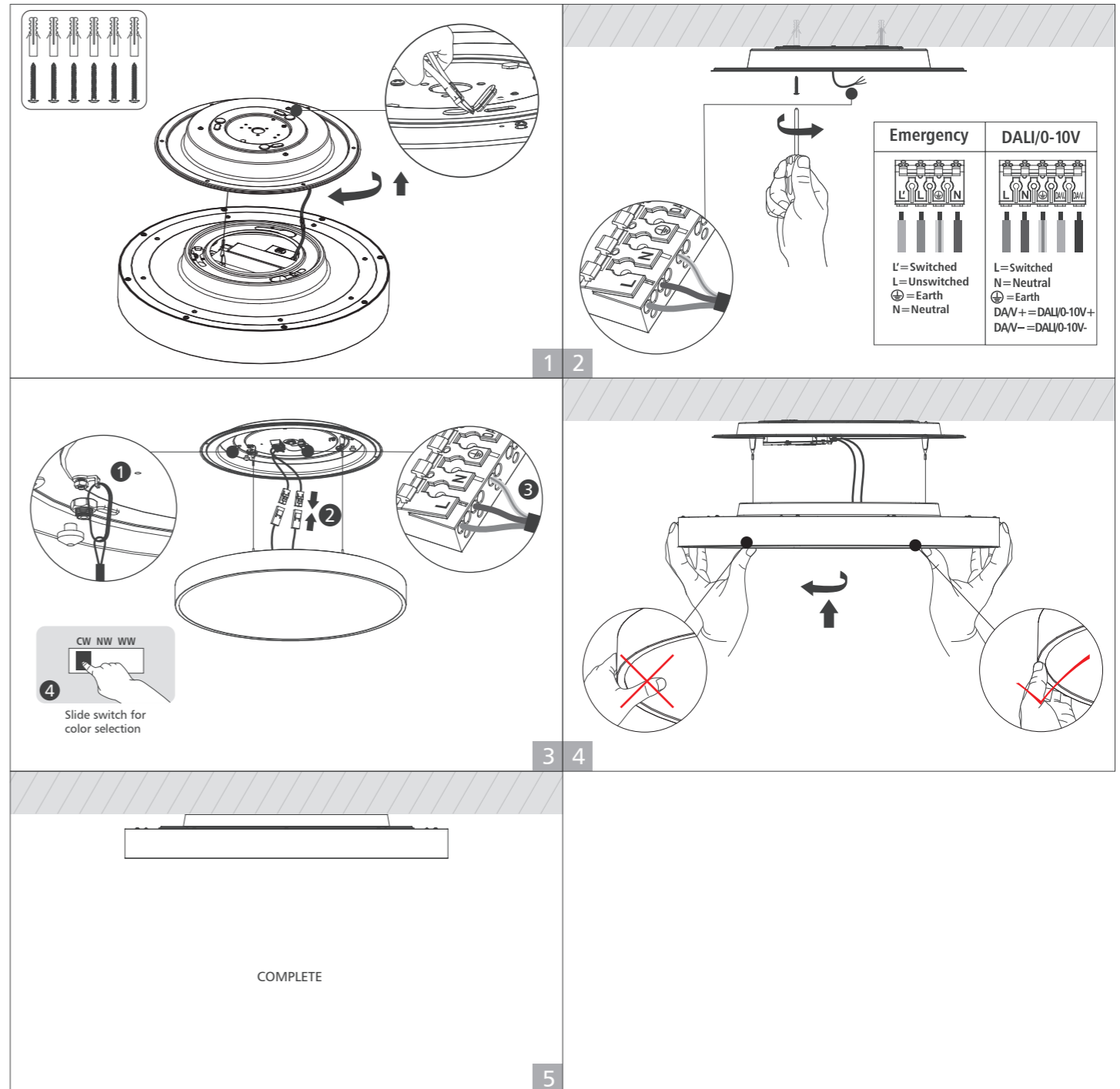
Installation Procedure

WARNING

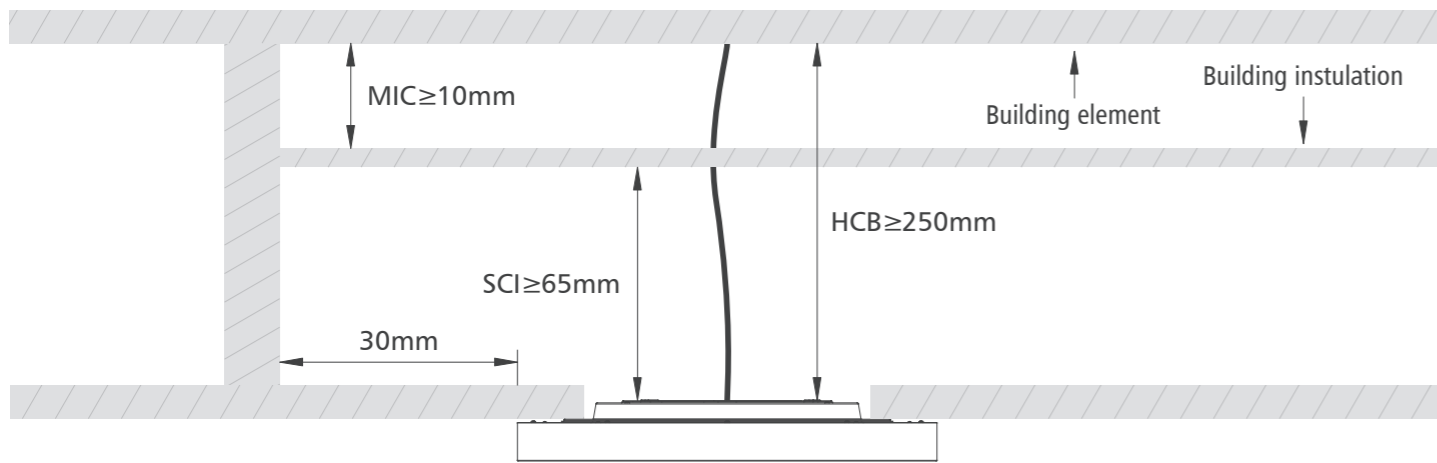
1. Switch off before installation.
2. Switch on only after complete installation and examination of the circuit.
3. Professional electrician for installation and maintenance only.



Surface Mount installation

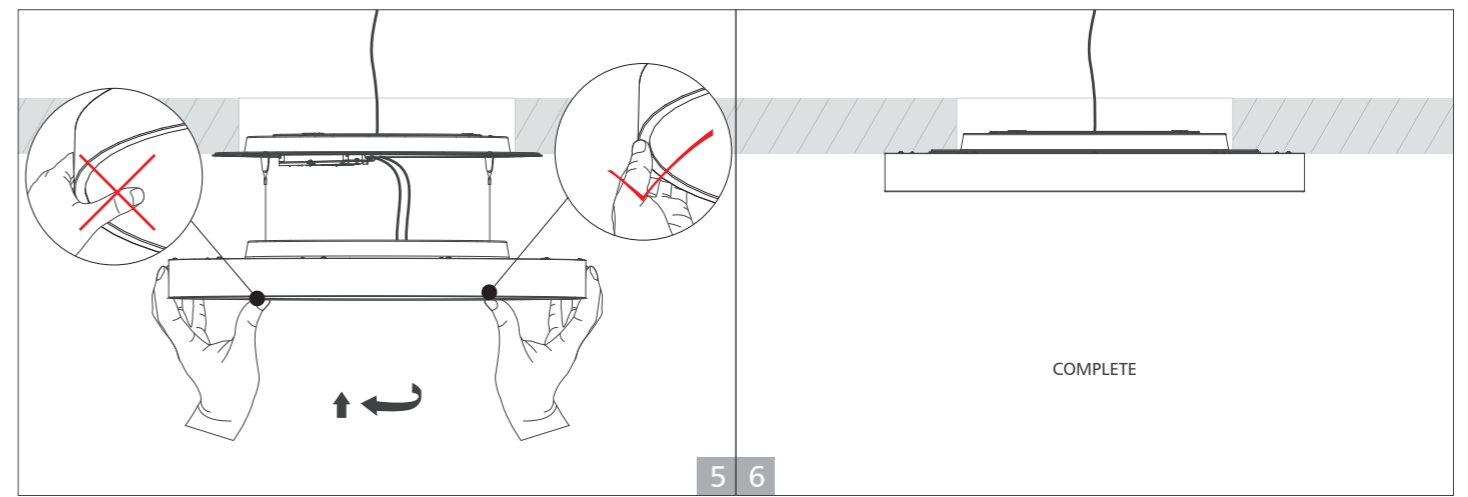
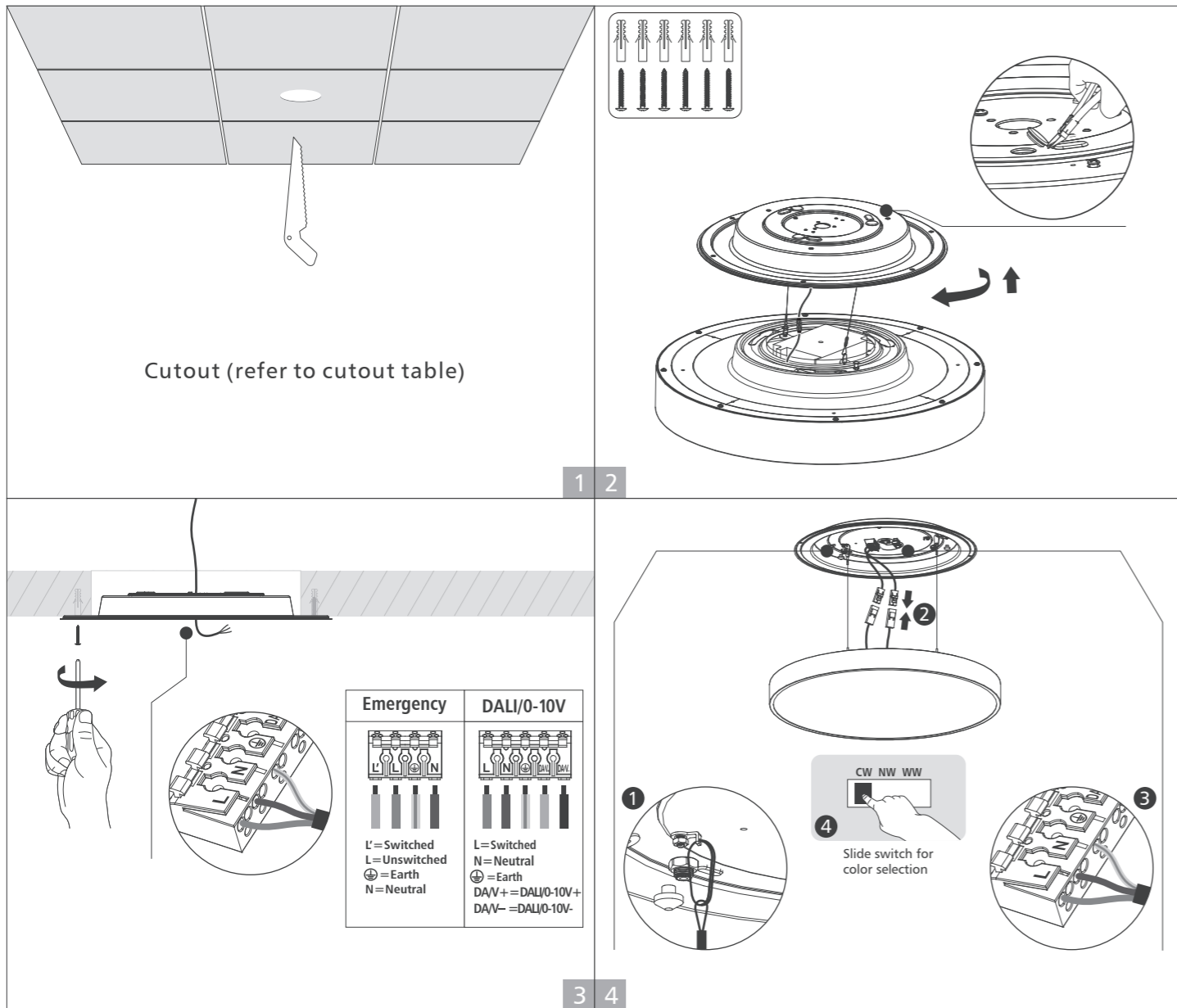


Recessed installation



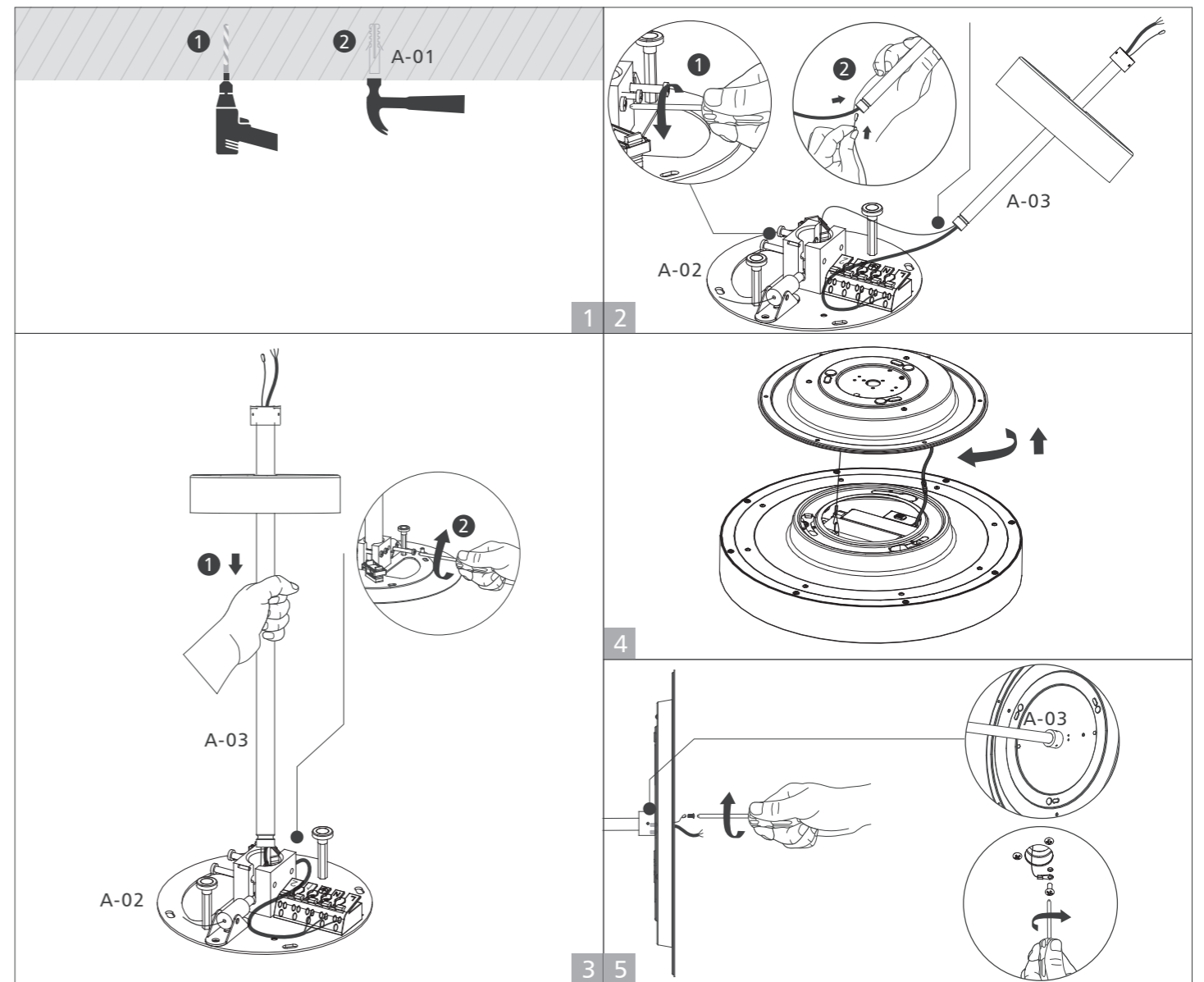
Ceiling cutout table

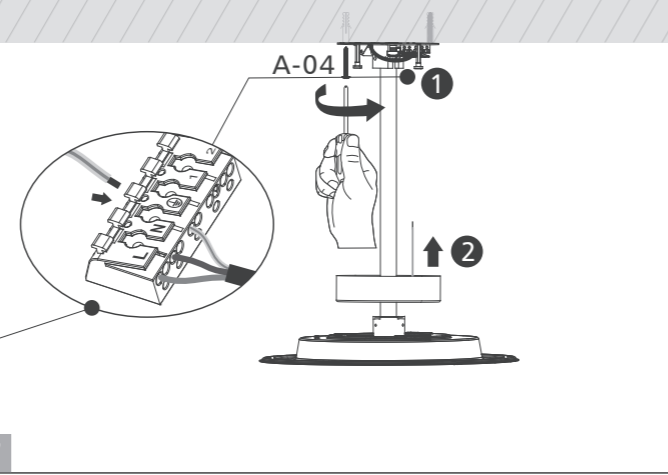
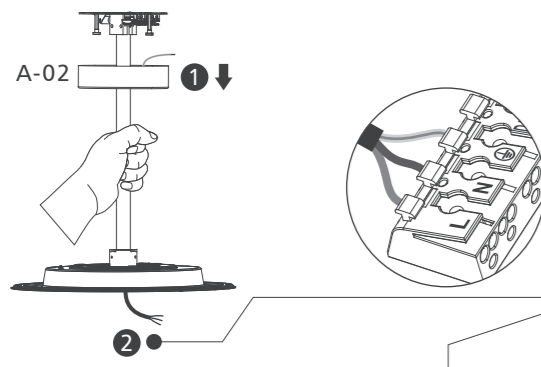
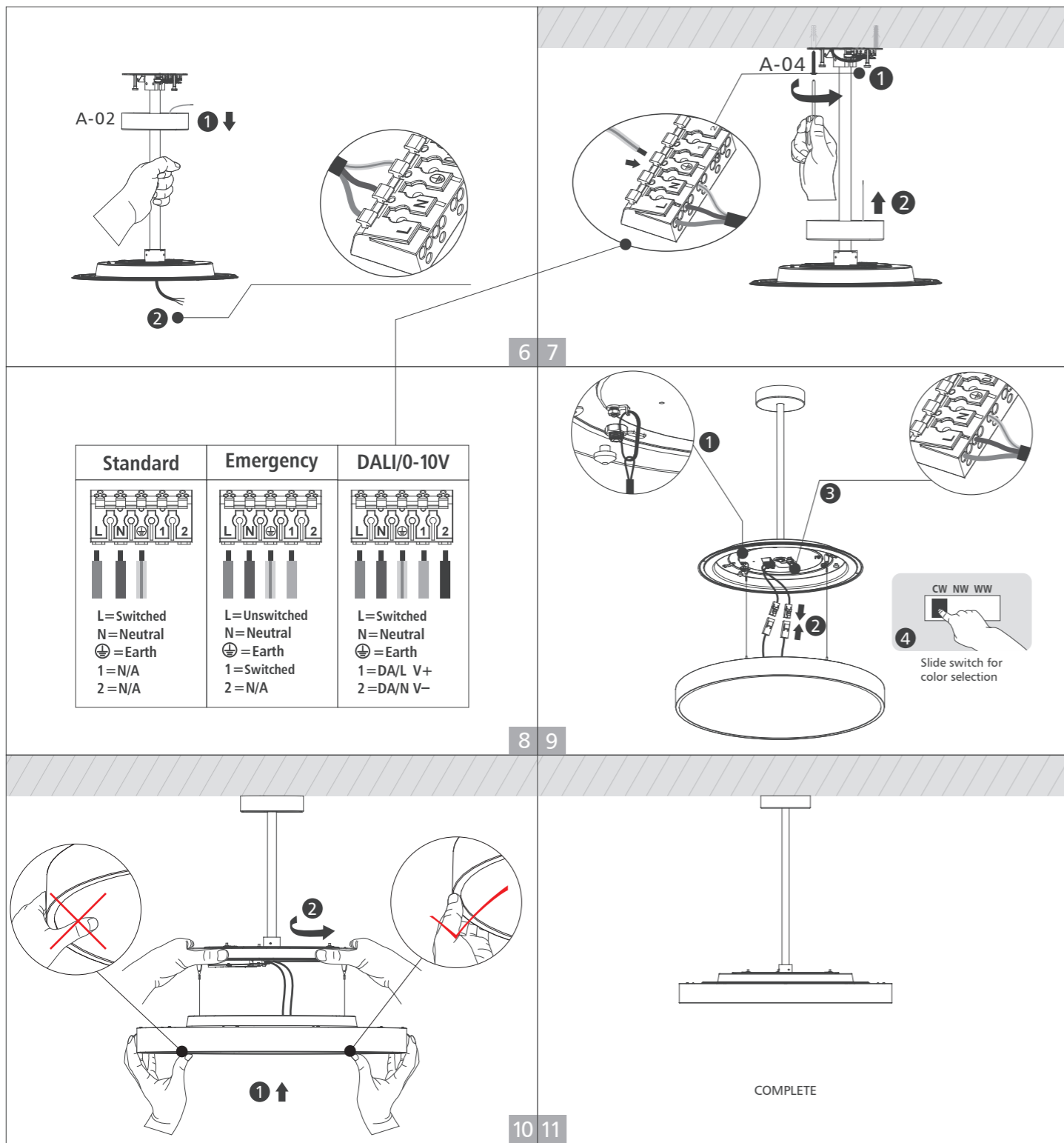
Downlight Dia (inch)	16	24	32	40
Ceiling Cutout (mm)	Ø220-250		Ø385-415	



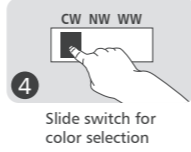
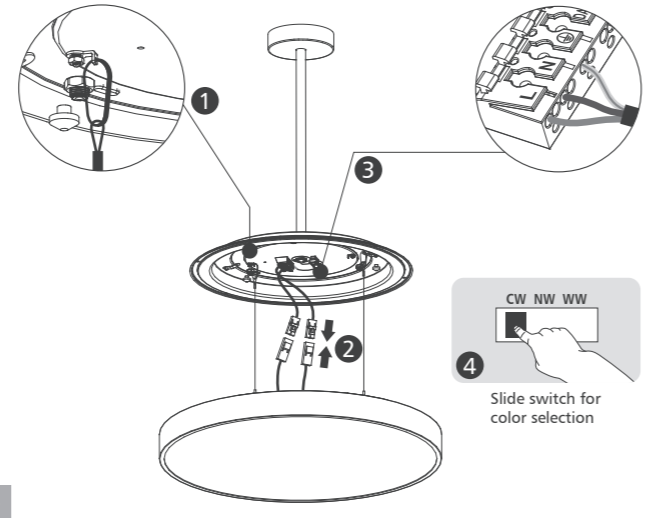
With pendant rod suspension installation

Code	A-01	A-02	A-03	A-04
	x4	x1	x1	x4



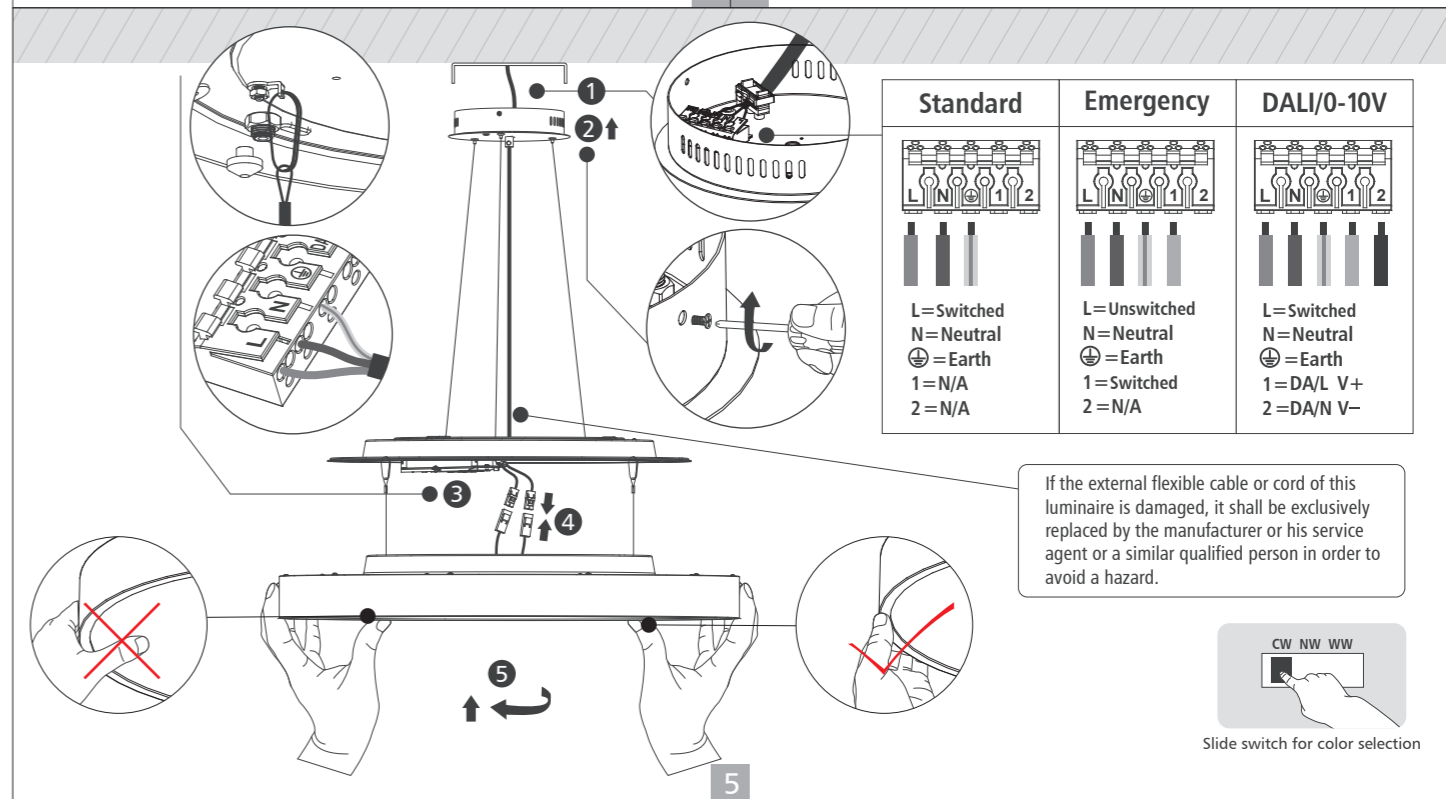
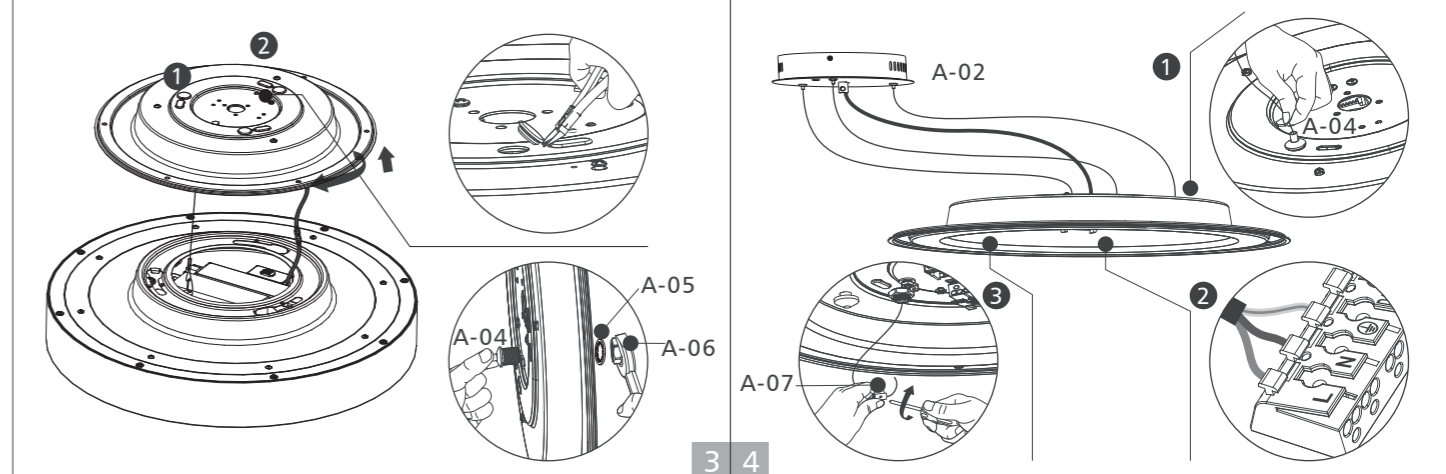
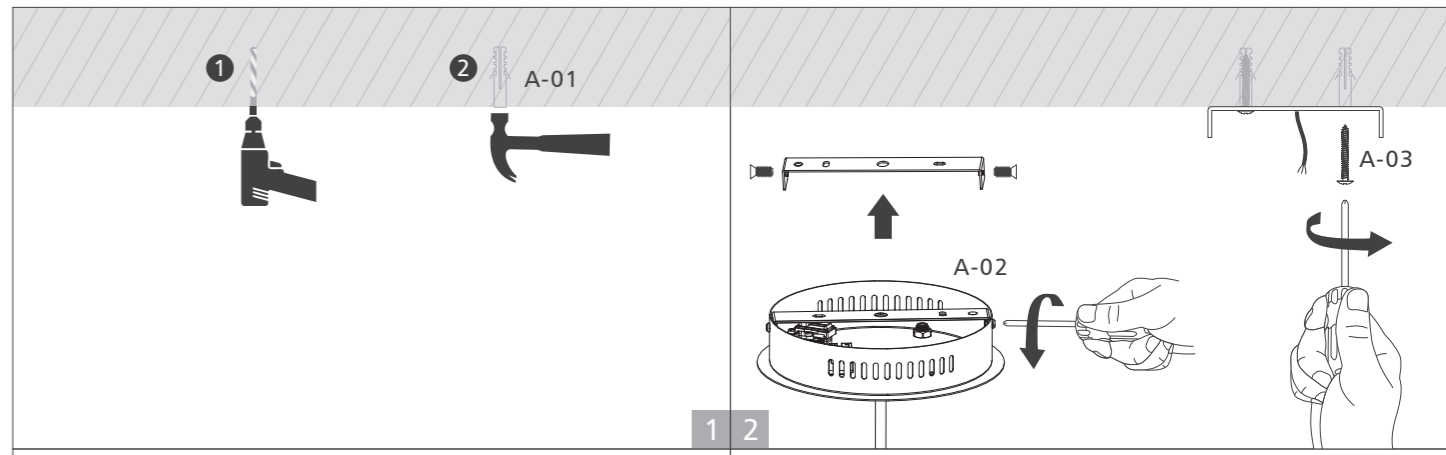


Standard	Emergency	DALI/0-10V
L=Switched N=Neutral ⊕=Earth 1=N/A 2=N/A	L=Unswitched N=Neutral ⊕=Earth 1=Switched 2=N/A	L=Switched N=Neutral ⊕=Earth 1=DA/L V+ 2=DA/N V-



With steel wire suspension installation

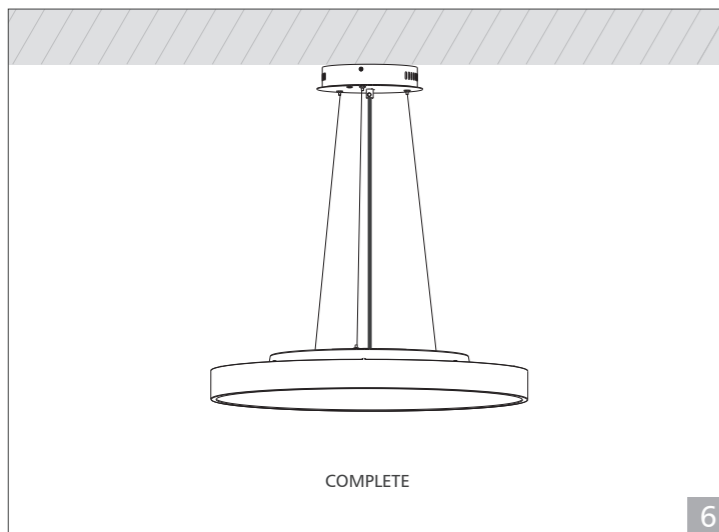
Code	A-01	A-02	A-03	A-04	A-05	A-06	A-07
	x2	x1	x2	x3	x3	x3	x3



Standard	Emergency	DALI/0-10V
L=Switched N=Neutral ⊕=Earth 1=N/A 2=N/A	L=Unswitched N=Neutral ⊕=Earth 1=Switched 2=N/A	L=Switched N=Neutral ⊕=Earth 1=DA/L V+ 2=DA/N V-

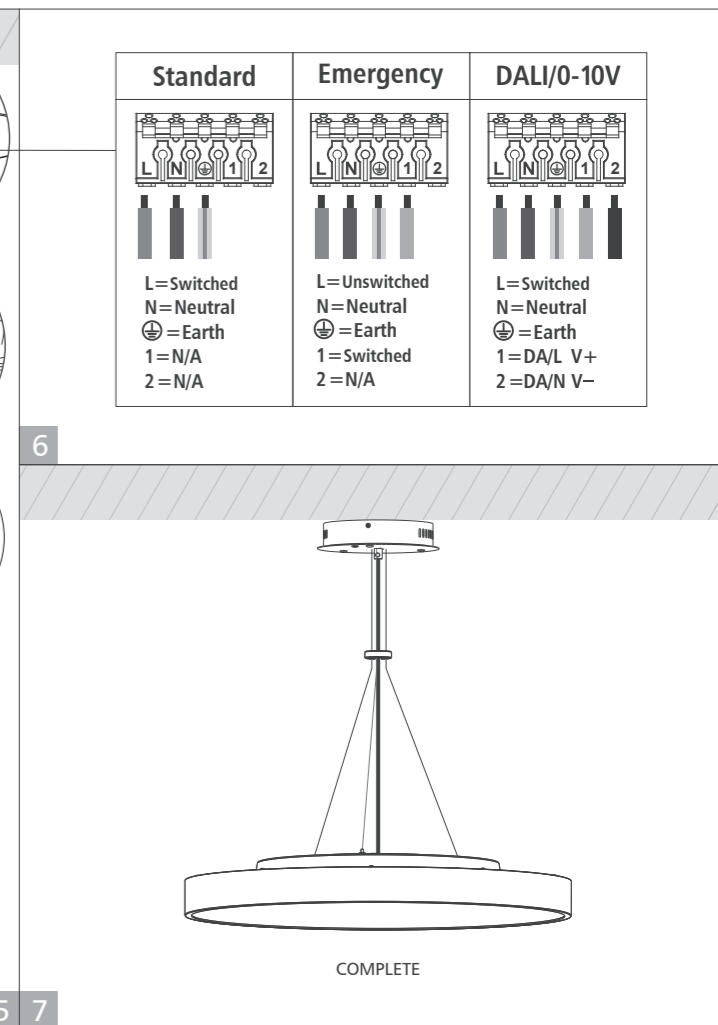
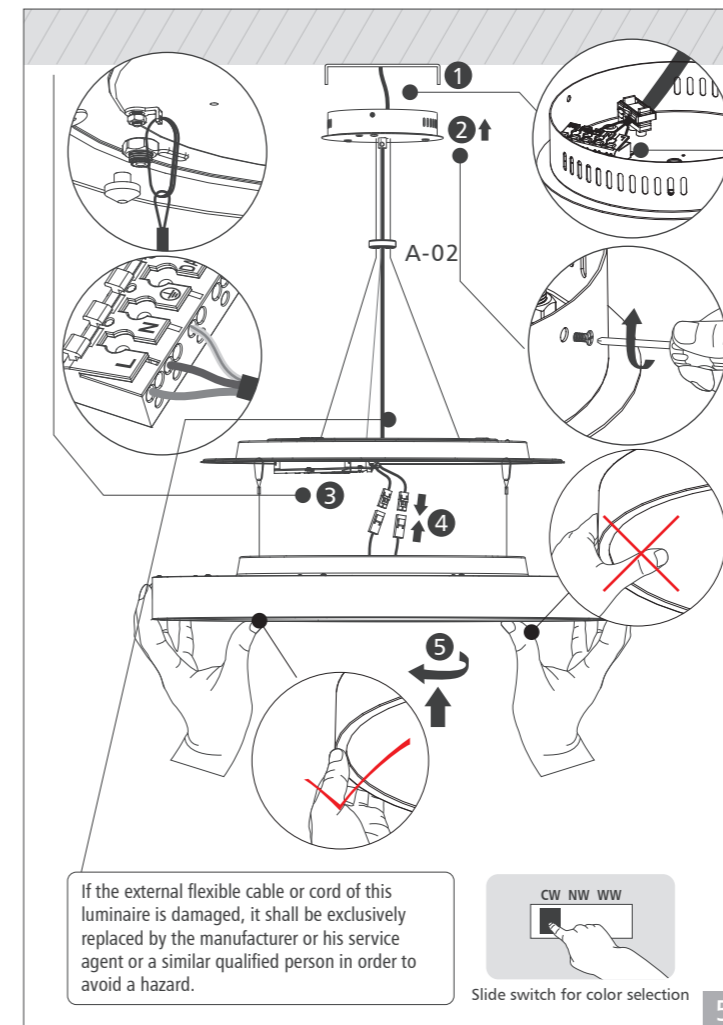
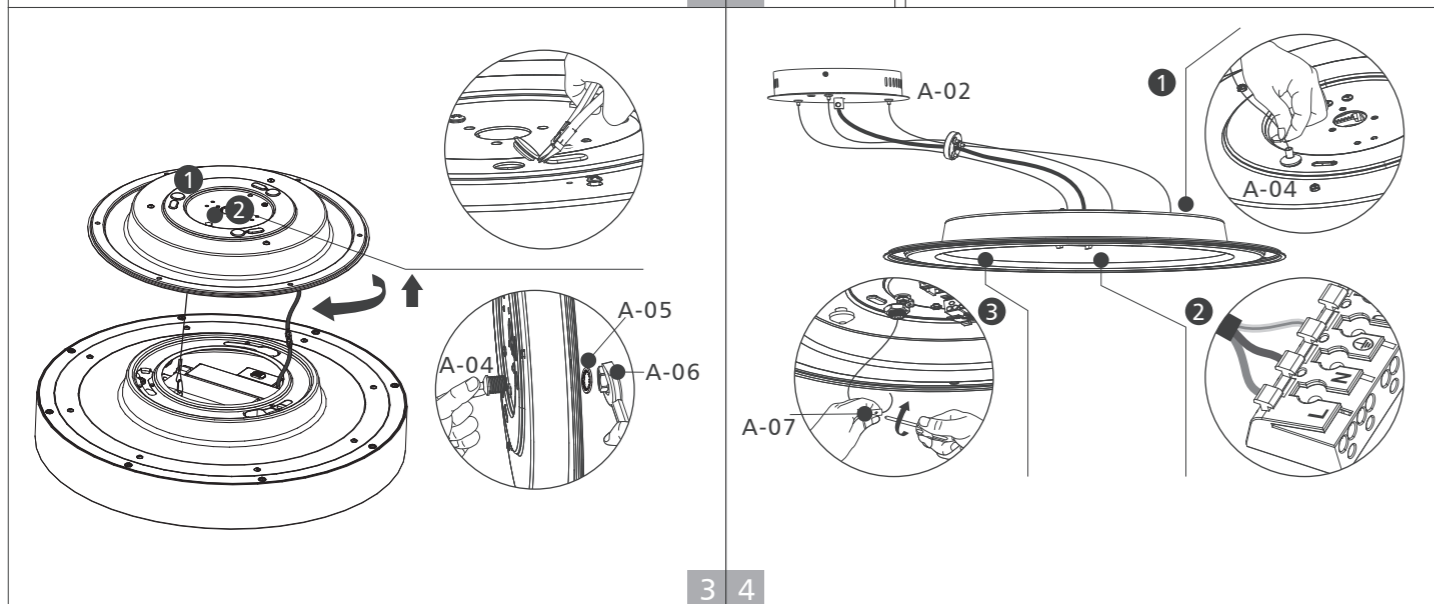
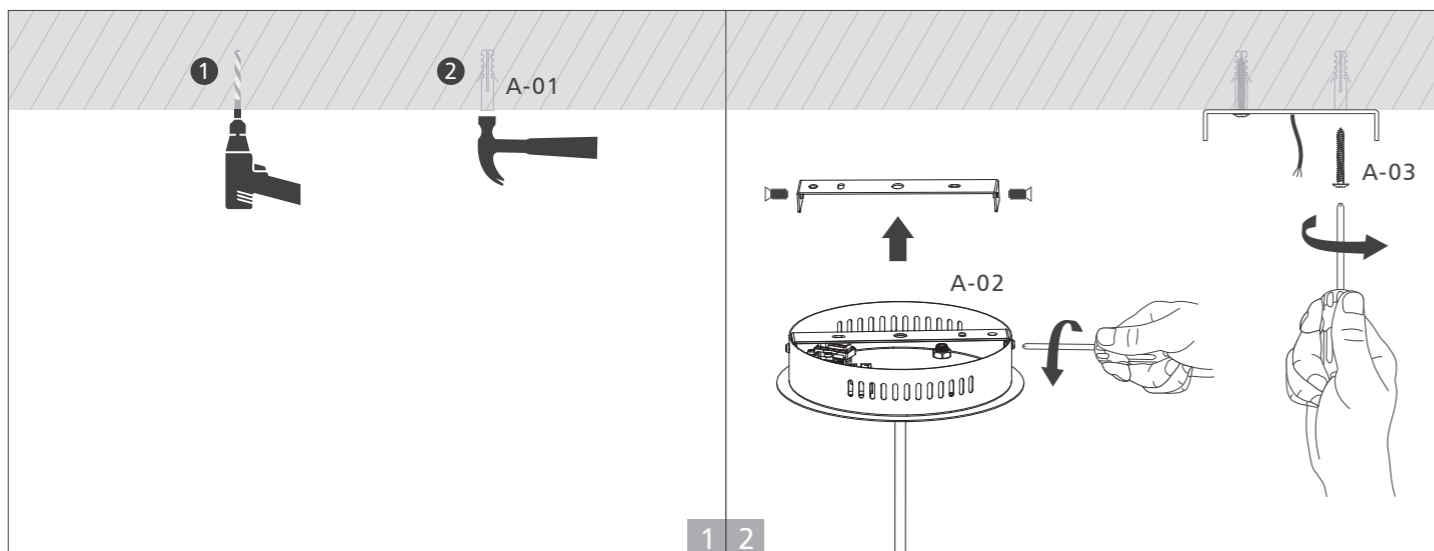
If the external flexible cable or cord of this luminaire is damaged, it shall be exclusively replaced by the manufacturer or his service agent or a similar qualified person in order to avoid a hazard.





With wire harness suspension installation

Code	A-01	A-02	A-03	A-04	A-05	A-06	A-07
	x2	x1	x2	x3	x3	x3	x3



Up to Shine, there is life

Add : 2nd building Dingfeng
High-Tech Zone, Fuyuan 1st Road,
FuYong Sub-district, Bao'an,
Shenzhen China 518103



Up-shine Lighting Co., Limited

Tel : +86-755-2919 7332
Fax : +86-755-2919 7301
E-mail : info@upshine.com
Web : www.upshine.com